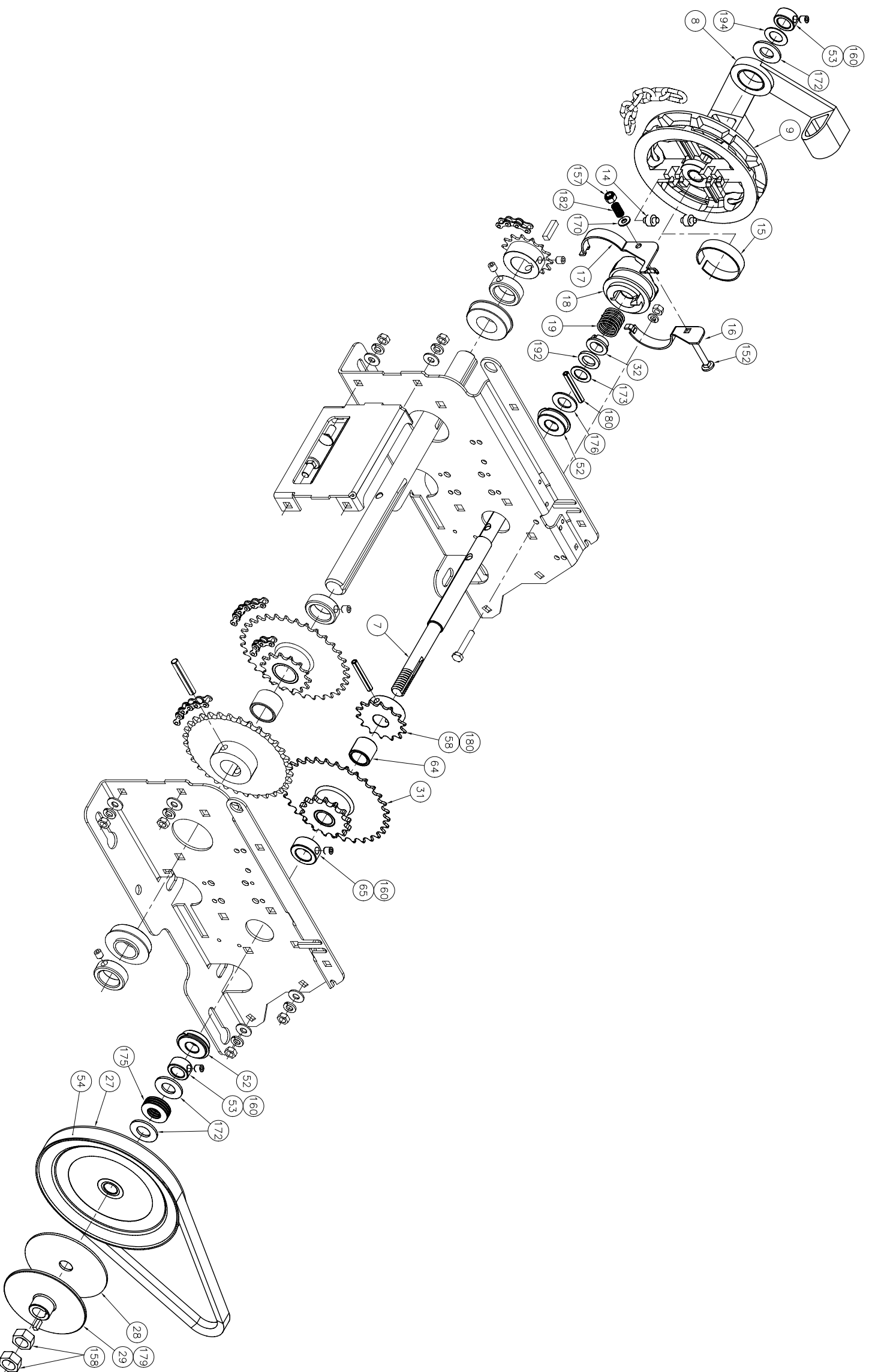


# OPERA (OPH) CLUTCH SHAFT KIT



PARTS IDENTIFICATION			
#	QTY	DESCRIPTION	# MANARAS
7	1	INPUT SHAFT	SHAFT104
8	1	CHAIN GUIDE	GUIDE012
9	1	HAND CHAIN PULLEY	POCKETWHEEL005
14	2	ROLLER	CAM012
15	1	FRICION BAND	SHOE011
16	1	SIMPLE SHOE	SHOE009
17	1	SWITCH SHOE	SHOE010
18	1	CAM DISCONNECT	CAM010
19	1	DISCONNECT SPRING	SPRING040
27	1	DRIVEN PULLEY 5L X 7"	PULLEY020
28	1	CL.PAD 5/8x4x0.1"	CLUTCHPAD005
29	1	CLUTCH PLATE OPERA	CLUTCHPLATE006
31	1	DOUBLE SPRCKET	41B14A410B32X.75
32	1	DISCONNECT SPRING BUSHING	BUSHING056
52	2	SEALED FLANGED BRG 5/8 PRECISION	BEARING006
53	2	COLLAR 5/8	COLLAR004
54	1	Type B, inside length .29"	VELT1B29
58	1	14 TOOTH 410 SPRCKET	SPR410B14X.75
64	1	SPACER	SPACER008
65	1	COLLAR 3/4	COLLAR005
152	1	CARRIAGE BOLT	BOLT094
157	1	NYLON LOCK NUT 1/4-20UNC	NUT020
158	2	5/8-18 HEX JAM NUT ZP	NUT013
160	3	SET SCREW 5/16-18UNC X 5/16	SCREW003
170	1	FLAT WASHER .250 X .562 X .049	WASHER003
172	3	FLAT WASHER .656 X 1.312 X .095	WASHER014
173	1	FLAT WASHER 5/8 PRECISION THIN	WASHER018
175	7	BELLEVILLE WASHER 5/8	WASHER035
176	1	FLAT WASHER .640 X 1.180 X .065	WASHER043
179	1	KEY 3/16 X 1/2	KW031
180	2	SPRING PIN 1/4 X 1-3/4	PIN020
182	1	SPRING	SPRING001
192	1	OLITE WASHER 5/8 X 1	WASHER057
194	1	FLAT WASHER 5/8	BEARING024

THE INFORMATION CONTAINED HEREIN IS PROPRIETARY TO MANARAS / OPERA AND SHALL NOT BE REPRODUCED OR DISCLOSED OR USED FOR ANY DESIGN OR MANUFACTURE EXCEPT WHEN USER POSSESSES DIRECT WRITTEN AUTHORIZATION FROM MANARAS / OPERA.

TITLE: **MOUNTSHAFT014 (DRAWING017)**

DESIGN BY: CHRISTIAN CLAUDEL DATE: 2007.03.30

MANARAS / OPERA  
136 ONEIDA DRIVE  
POINTE-CLAIRE, QC H9R 1A8  
TEL 514.426.1332  
FAX 514.426.4330

