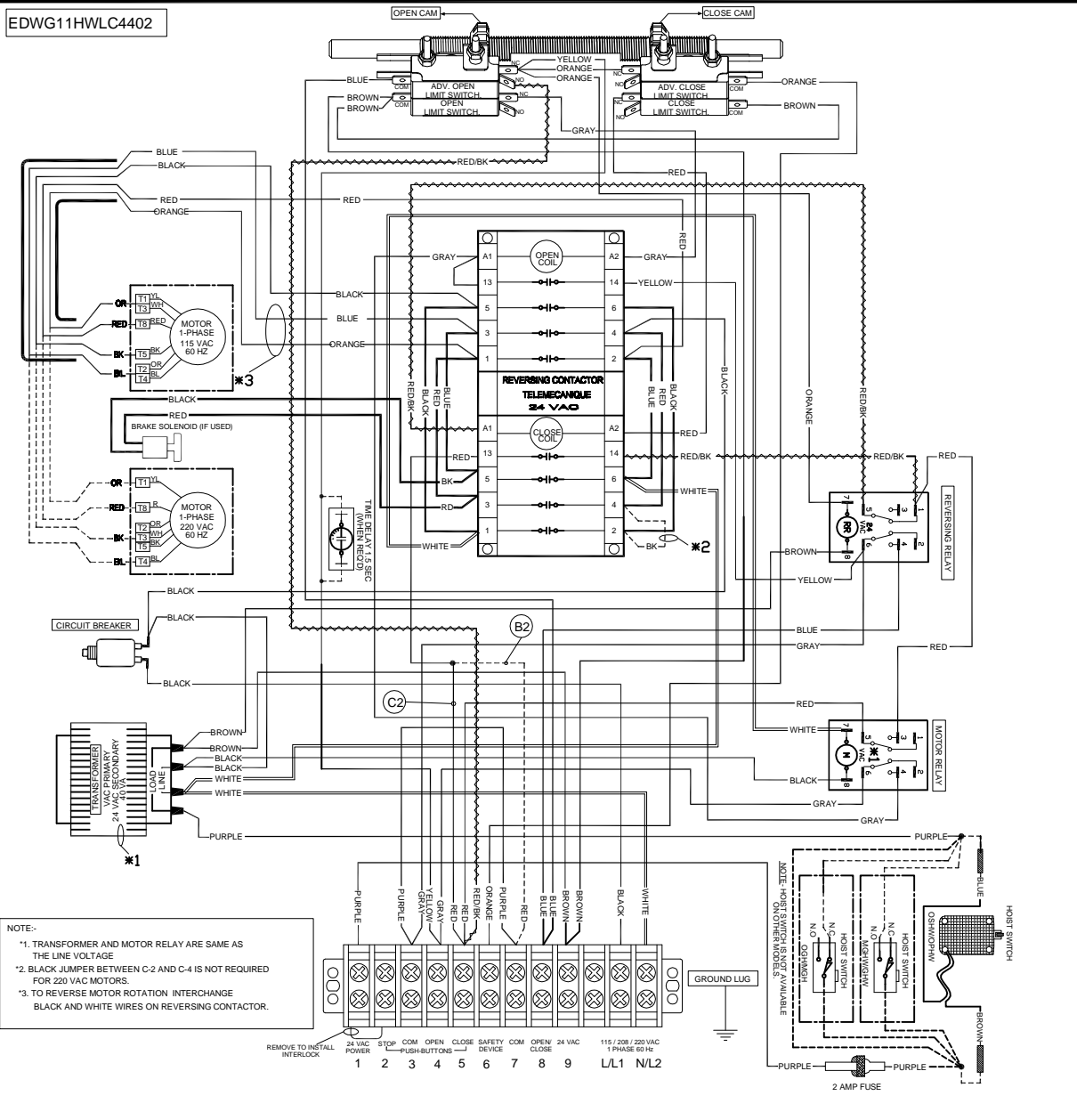


EDWG11HWLC4402



NOTE:-  
 \*1. TRANSFORMER AND MOTOR RELAY ARE SAME AS THE LINE VOLTAGE  
 \*2. BLACK JUMPER BETWEEN C-2 AND C-4 IS NOT REQUIRED FOR 220 VAC MOTORS.  
 \*3. TO REVERSE MOTOR ROTATION INTERCHANGE BLACK AND WHITE WIRES ON REVERSING CONTACTOR.

EXTERNAL WIRING

LINE POWER	POWER 24 VAC	EXTERNAL INTERLOCK	SAFETY REVERSE	OPEN/CLOSE COMMAND	3-POSITION KEY SW. W/SPRING RETURN TO CENTRE	SINGLE PUSH-BUTTON STATION	TWO PUSH-BUTTON STATION	RADIO RECEIVER
L/L1 N/L2	1 9	1 2	3 6	7 8	5 4 3	5 4 3 2	5 4 3 2	7 8 9
POWER SUPPLY 120/208/240 VAC 1 Ph. 60 HZ.	24 VAC POWER AVAILABLE 10VA MAX.	REMOVE TO INSTALL INTERLOCK	CONTACT FOR SAFETY DEVICE	CONTACT FOR OPEN/ CLOSE DOOR DEVICE.	KEY-SWITCH	CAUTION PLACE A JUMPER BETWEEN TERMINAL #2 AND #3, IF STOP BUTTON IS NOT USED.		

ATTENTION- USE 18AWG OR HIGHER FOR WIRING ALL EXTERNAL CONNECTIONS.

1 NOTE- C2/ B2

- 1A C2 ⇨ B2 REMOVE THE RED WIRE WITH RAPID CONNECTOR FROM TERMINAL #5, AND TRANSFER IT TO TERMINAL #7.
- 1B B2 ⇨ C2 REMOVE THE RED WIRE WITH RAPID CONNECTOR FROM TERMINAL #7, AND TRANSFER IT TO TERMINAL #5.

**WARNING:**  
 MOTORISED DOORS CAN CAUSE SERIOUS INJURIES OR DEATH. MANARAS STRONGLY RECOMMENDS THE USE OF ENTRAPMENT PROTECTION SYSTEMS, ESPECIALLY IN THE CASES OF MOMENTARY CONTACT TO CLOSE AS IN B2 WIRING OR TIMER TO CLOSE.

ON SITE MODIFICATIONS

- 2 CONSTANT PRESSURE OPEN  
1. REMOVE THE GRAY WIRE FROM TERMINAL #3 AND PLACE IT ON TERMINAL #4
- 3 WIRING FOR INSTANT STOP (ON SAFETY EDGE OR DEVICE)  
1. REMOVE THE YELLOW WIRE FROM ADV. OPEN LIMIT SWITCH, AND CAP IT.  
2. REMOVE THE BLUE WIRE FROM PIN #4 OF REVERSING RELAY(RR) AND CAP IT.
- 4 ADDING A TIME DELAY ON REVERSE  
ADV. OPEN L.S. ORANGE ORANGE BLUE YELLOW  
1. REMOVE THE YELLOW WIRE FROM ADV. OPEN LIMIT SWITCH, CONNECT THIS WIRE TO ONE END OF TIME-DELAY.  
2. FROM OTHER END OF THE TIME-DELAY, CONNECT BACK TO ADV. OPEN LIMIT SWITCH.  
1.5 SEC. T.D. MODULE
- 5 CONSTANT PRESSURE OPEN AND CLOSE - D1  
PERFORM THE MODIFICATION EXPLAINED IN THE NOTES.  
1B 2 AND 3
- 6 ANY OTHER OPTIONS  
FOR ANY OTHER OPTIONS LIKE, TIMER TO CLOSE, MID-STOP WIRING, LONG DISTANCE MODULE OR ANY OTHER SPECIAL LOGIC SEQUENCE PLEASE CONSULT MANARAS/ OPERA.

**TITLE: WIRING DIAGRAM- 120/208/240 VAC 1-PHASE**  
 DRAWN BY: BP DATE: 20. SEPT. 2010 CAD FILE: EDWG11HWLC4402 REV: C DATE: 02. NOV. 2012  
 MANARAS-OPERA  
 136 ONEIDA DRIVE  
 POINTE-CLAIRE, QC H9R 1A8  
 TEL: 1-800-361-2260  
 FAX: 1-888-626-0606

THE INFORMATION CONTAINED HEREIN IS PROPRIETARY TO MANARAS-OPERA, AND SHALL NOT BE REPRODUCED OR DISCLOSED OR USED FOR ANY DESIGN OR MANUFACTURE EXCEPT WHEN USER POSSESSES DIRECT WRITTEN AUTHORIZATION FROM MANARAS-OPERA.