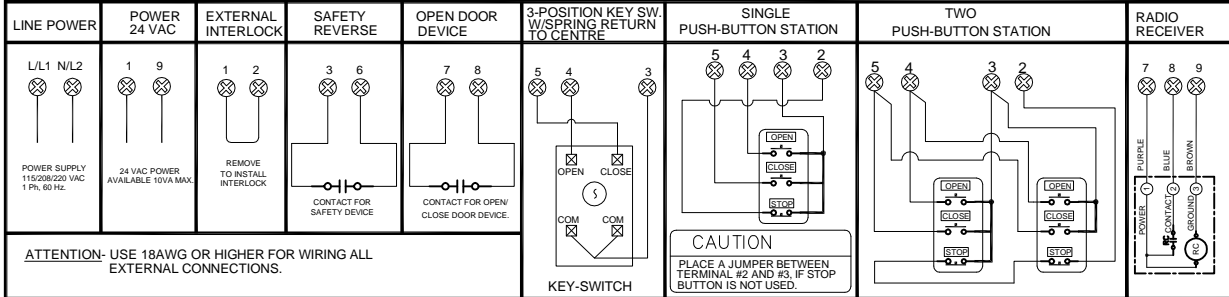


NOTE:-  
 \*1. TRANSFORMER AND MOTOR RELAY ARE SAME AS THE LINE VOLTAGE  
 \*2. BLACK JUMPER BETWEEN C-2 AND C-4 IS NOT REQUIRED FOR 220 VAC MOTORS.  
 \*3. TO REVERSE MOTOR ROTATION INTERCHANGE BLUE AND ORANGE WIRES ON REVERSING CONTACTOR.

EXTERNAL WIRING



ATTENTION- USE 18AWG OR HIGHER FOR WIRING ALL EXTERNAL CONNECTIONS.

- CONSTANT PRESSURE CLOSE  
1. REMOVE THE RED WIRE FROM TERMINAL #7 AND PLACE IT ON TERMINAL #5
  - CONSTANT PRESSURE OPEN  
1. REMOVE THE GRAY WIRE FROM TERMINAL #3 AND PLACE IT ON TERMINAL #4
- WARNING:**  
 MOTORISED DOORS CAN CAUSE SERIOUS INJURIES OR DEATH. MANARAS STRONGLY RECOMMENDS THE USE OF ENTRAPMENT PROTECTION SYSTEMS, ESPECIALLY IN THE CASES OF MOMENTARY CONTACT TO CLOSE AS IN B2 WIRING OR TIMER TO CLOSE.

ON SITE MODIFICATIONS

- WIRING FOR INSTANT STOP (ON SAFETY EDGE OR DEVICE)  
1. REMOVE THE YELLOW WIRE FROM ADV. OPEN LIMIT SWITCH, AND CAP IT.  
2. REMOVE THE BLUE WIRE FROM PIN #4 OF REVERSING RELAY (RR) AND CAP IT.
- CONSTANT PRESSURE OPEN AND CLOSE - D1

- ADDING A TIME DELAY ON REVERSE C/W TIMER TO CLOSE  
1. REMOVE THE YELLOW WIRE FROM ADV. OPEN LIMIT SWITCH, CONNECT THIS WIRE TO ONE END OF TIME-DELAY.  
2. FROM OTHER END OF THE TIME-DELAY, CONNECT BACK TO ADV. OPEN LIMIT SWITCH.  
3. REMOVE THE BLUE JUMPER FROM TERMINAL #4 AND #8.  
4. MAKE A NEW WIRE FROM TERMINAL #8 AND CONNECT TO PIN #8 OF RR RELAY.

ANY OTHER OPTIONS

FOR ANY OTHER OPTIONS LIKE: TIMER TO CLOSE, MID-STOP WIRING, LONG DISTANCE MODULE, OR ANY OTHER SPECIAL LOGIC SEQUENCE PLEASE CONSULT MANARAS/OPERA.

TITLE: WIRING DIAGRAM- 120/208/240 VAC 1-PHASE

DRAWN BY: BP DATE: 02.NOV.12 CAD FILE: EDWG11HWLC4405 REV: A DATE: 02.NOV.2012

MANARAS-OPERA  
 136 ONEIDA DRIVE  
 POINTE-CLAIRE, QC H9R 1A8  
 TEL: 1-800-361-2260  
 FAX: 1-888-626-0606



THE INFORMATION CONTAINED HEREIN IS PROPRIETARY TO MANARAS-OPERA, AND SHALL NOT BE REPRODUCED OR DISCLOSED OR USED FOR ANY DESIGN OR MANUFACTURE EXCEPT WHEN USER POSSESSES DIRECT WRITTEN AUTHORIZATION FROM MANARAS-OPERA.