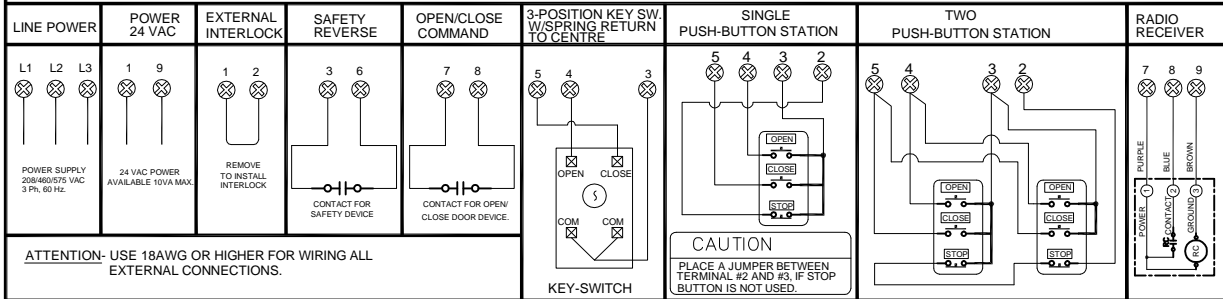


NOTE-
 *1. TRANSFORMER IS SAME AS THE LINE VOLTAGE
 *2. TO REVERSE MOTOR ROTATION INTERCHANGE ANY TWO WIRES ON REVERSING CONTACTOR.

EXTERNAL WIRING



ATTENTION- USE 18AWG OR HIGHER FOR WIRING ALL EXTERNAL CONNECTIONS.

1 NOTE- C2/ B2

- 1A C2 → B2 REMOVE THE RED WIRE WITH RAPID CONNECTOR FROM TERMINAL #5, AND TRANSFER IT TO TERMINAL #7.
- 1B B2 → C2 REMOVE THE RED WIRE WITH RAPID CONNECTOR FROM TERMINAL #7, AND TRANSFER IT TO TERMINAL #5.

WARNING:
 MOTORISED DOORS CAN CAUSE SERIOUS INJURIES OR DEATH. MANARAS STRONGLY RECOMMENDS THE USE OF ENTRAPMENT PROTECTION SYSTEMS, ESPECIALLY IN THE CASES OF MOMENTARY CONTACT TO CLOSE AS IN B2 WIRING OR TIMER TO CLOSE.

ON SITE MODIFICATIONS

- 2 CONSTANT PRESSURE OPEN
 1. REMOVE THE GRAY WIRE FROM TERMINAL #3 AND PLACE IT ON TERMINAL #4
- 3 WIRING FOR INSTANT STOP (ON SAFETY EDGE OR DEVICE)
 1. REMOVE THE YELLOW WIRE FROM ADV. OPEN LIMIT SWITCH, AND CAP IT.
 2. REMOVE THE BLUE WIRE FROM PIN #4 OF REVERSING RELAY(RR) AND CAP IT.

- 4 ADDING A TIME DELAY ON REVERSE
 ADV. OPEN L.S. ORANGE ORANGE BLUE YELLOW
 1. REMOVE THE YELLOW WIRE FROM ADV. OPEN LIMIT SWITCH, CONNECT THIS WIRE TO ONE END OF TIME-DELAY.
 2. FROM OTHER END OF THE TIME-DELAY, CONNECT BACK TO ADV. OPEN LIMIT SWITCH.
 1.5 SEC. T.D. MODULE

- 5 CONSTANT PRESSURE OPEN AND CLOSE - D1
 PERFORM THE MODIFICATION EXPLAINED IN THE NOTES.
 1B 2 AND 3
- 6 ANY OTHER OPTIONS
 FOR ANY OTHER OPTIONS LIKE, TIMER TO CLOSE, MID-STOP WIRING, LONG DISTANCE MODULE OR ANY OTHER SPECIAL LOGIC SEQUENCE PLEASE CONSULT MANARAS/ OPERA.

TITLE: WIRING DIAGRAM- 208/480/600 VAC 3-PHASE

DRAWN BY: BP DATE: 20. SEPT. 2010 CAD FILE: EDWG13HWLC4401 REV: DATE: 01. NOV. 2012

MANARAS-OPERA
 136 ONEIDA DRIVE
 POINTE-CLAIRE, QC H9R 1A8
 TEL: 1-800-361-2260
 FAX: 1-888-626-0606



THE INFORMATION CONTAINED HEREIN IS PROPRIETARY TO MANARAS-OPERA, AND SHALL NOT BE REPRODUCED OR DISCLOSED OR USED FOR ANY DESIGN OR MANUFACTURE EXCEPT WHEN USER POSSESSES DIRECT WRITTEN AUTHORIZATION FROM MANARAS/OPERA.