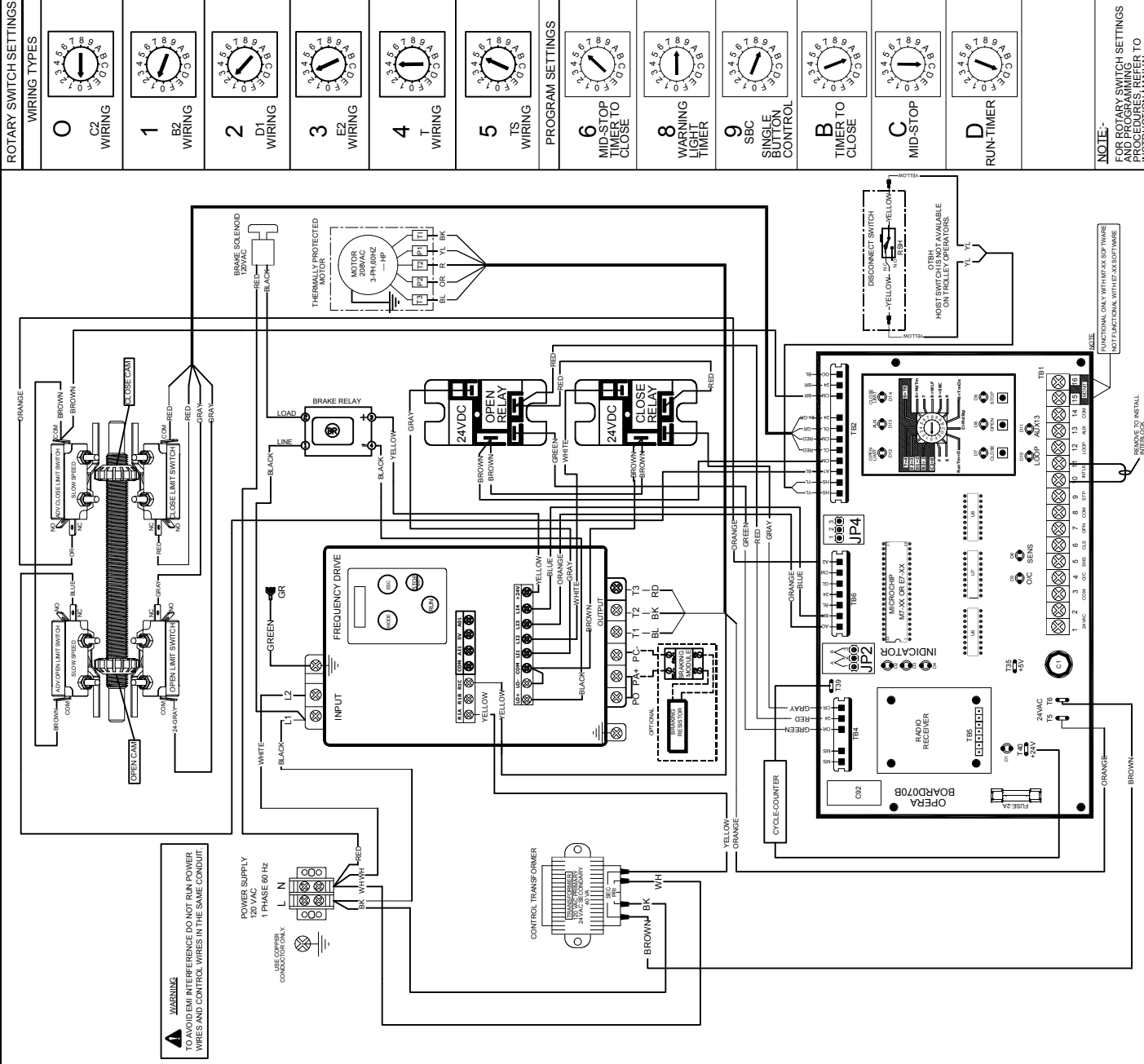


WIRING DIAGRAM - VARIABLE FREQUENCY DRIVE, 1 -PHASE, 120VAC



**WARNING**  
TO AVOID EMI INTERFERENCE DO NOT RUN POWER WIRES AND CONTROL WIRES IN THE SAME CONDUIT.

POWER SUPPLY  
120 VAC  
1 PHASE 60 Hz

USE COPPER  
CONDUCTOR ONLY.

**ROTARY SWITCH SETTINGS**

**WIRING TYPES**

- 0** C2 WIRING
- 1** B2 WIRING
- 2** D1 WIRING
- 3** E2 WIRING
- 4** T WIRING
- 5** TS WIRING

**PROGRAM SETTINGS**

- 6** MID-STOP TIMER TO CLOSE
- 8** WARNING LIGHT TIMER
- 9** SBC SINGLE BUTTON CONTROL
- B** TIMER TO CLOSE
- C** MID-STOP
- D** RUN-TIMER

**NOTE-**  
FOR ROTARY SWITCH SETTINGS AND PROGRAMMING AND PROGRAMMING INSTRUCTIONS REFER TO INSTRUCTION MANUAL

**EXTERNAL WIRING**

**3-POSITION KEY SW W/SPRING RETURN TO CENTRE**

**KEY-SWITCH**

**OPEN/CLOSE COMMAND**

**SAFETY REVERSE**

**EXTERNAL INTERLOCK**

**LINE POWER**

**POWER SUPPLY**  
120 VAC  
1 PH 60 Hz

**WARNING**  
① - USE 18AWG OR HIGHER FOR WIRING ALL EXTERNAL CONNECTIONS  
② - MOTORIZED DOORS CAN CAUSE SERIOUS INJURIES OR DEATH. MANARAS STRONGLY RECOMMENDS THE USE OF ENTRAPMENT PROTECTION SYSTEMS, ESPECIALLY IN THE CASE OF MOMENTARY CONTACT TO CLOSE AS IN B2 WIRING  
THE INFORMATION CONTAINED HEREIN IS PROPRIETARY TO MANARAS OPERA AND SHALL NOT BE REPRODUCED OR DISCLOSED OR USED FOR ANY DESIGN OR MANUFACTURE EXCEPT WHEN USER POSSESSES DIRECT WRITTEN AUTHORIZATION FROM MANARAS-OPERA

**SINGLE PUSH-BUTTON STATION**

**TWO PUSH-BUTTON STATION**

**LOOP DETECTOR**

**MONITORED PHOTOCELL**

**ON BOARD JUMPER SETTINGS**

DISCONNECT SWITCH	PRESENT	NOT PRESENT
JP4	1, 2, 3	2, 3
JP2	1, 2, 3	2, 3

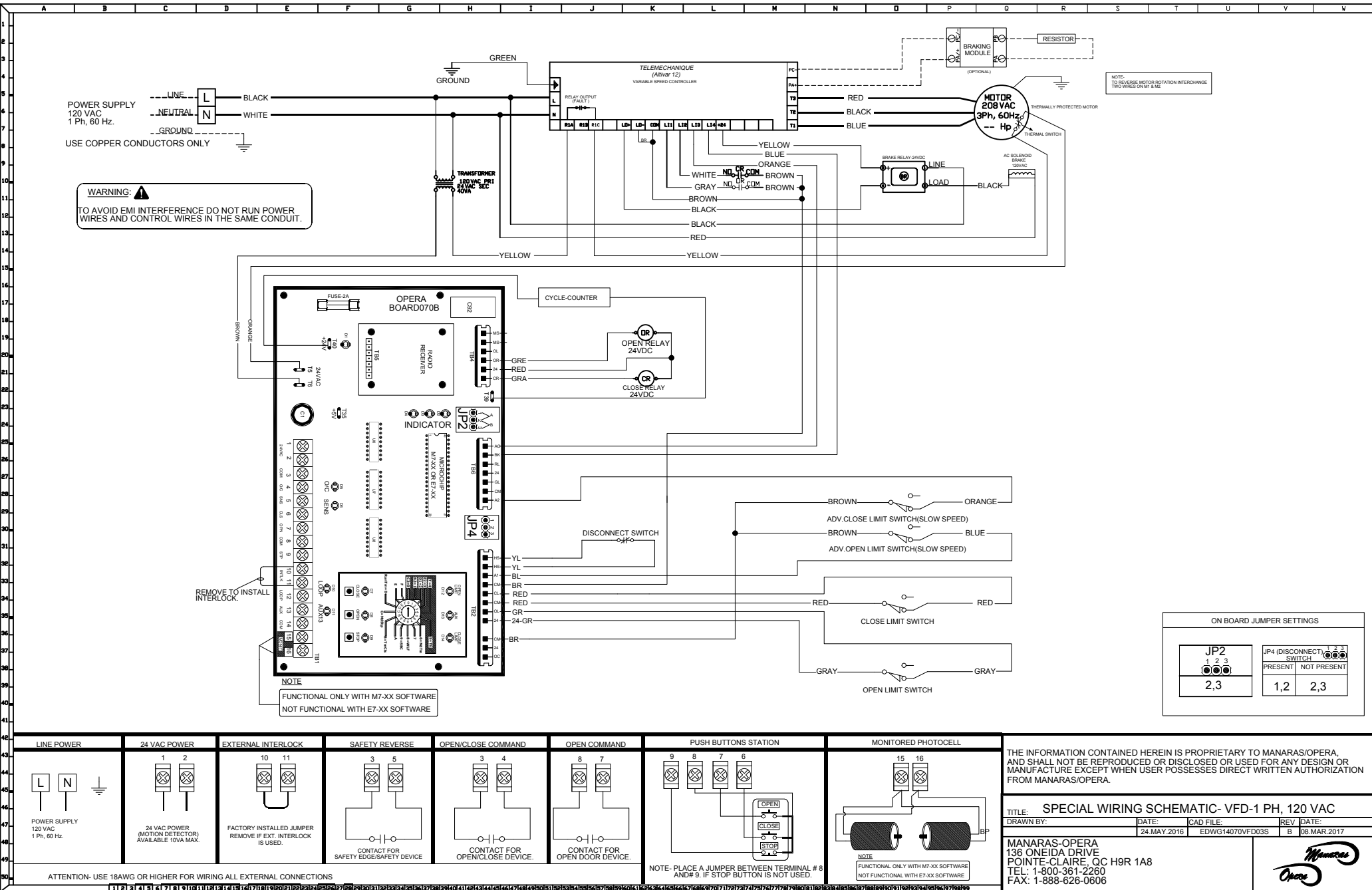
**NOTE**  
FUNCTIONAL ONLY WITH MAXX SOFTWARE  
NOT FUNCTIONAL WITH E7-XX SOFTWARE

**DATE:** 24.05.2016 **REV:** C **08.MAR.2017**

**DRAWN BY:** BP **CAD FILE:** EDWG1407VFD03

**TITLE:** SPECIAL WIRING DIAGRAM, VFD- 1-PH, 120VAC

MANARAS-OPERA  
136 ONEIDA DRIVE  
POINT ECLAIR, MO 63001  
TEL: 1-888-626-2600  
FAX: 1-888-626-0600

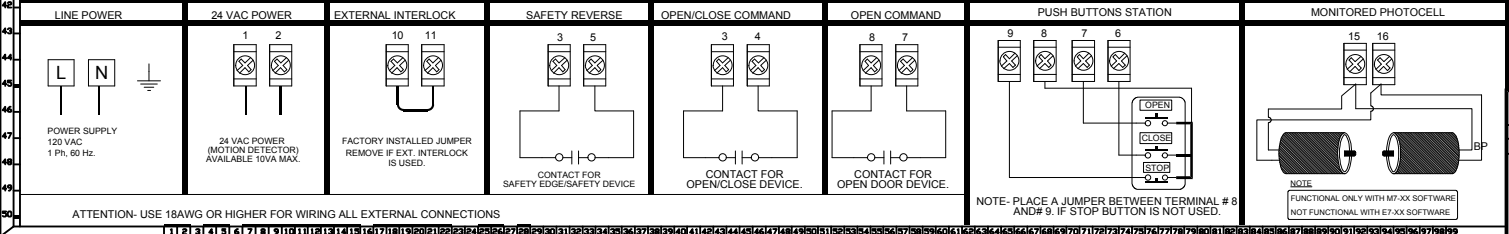


**WARNING:** ⚠️  
 TO AVOID EMI INTERFERENCE DO NOT RUN POWER WIRES AND CONTROL WIRES IN THE SAME CONDUIT.

NOTE:  
 TO REVERSE MOTOR ROTATION INTERCHANGE TWO WIRES ON M1 & M2.

NOTE  
 FUNCTIONAL ONLY WITH M7-XX SOFTWARE  
 NOT FUNCTIONAL WITH E7-XX SOFTWARE

ON BOARD JUMPER SETTINGS		
<b>JP2</b>  2,3	<b>JP4 (DISCONNECT SWITCH)</b>  1,2    2,3	



THE INFORMATION CONTAINED HEREIN IS PROPRIETARY TO MANARAS/OPERA, AND SHALL NOT BE REPRODUCED OR DISCLOSED OR USED FOR ANY DESIGN OR MANUFACTURE EXCEPT WHEN USER POSSESSES DIRECT WRITTEN AUTHORIZATION FROM MANARAS/OPERA.

TITLE: SPECIAL WIRING SCHEMATIC- VFD-1 PH, 120 VAC

DRAWN BY:	DATE:	CAD FILE:	REV:	DATE:
	24.MAY.2016	EDWG14070VFD03S	B	08.MAR.2017

MANARAS-OPERA  
 136 ONEIDA DRIVE  
 POINTE-CLAIRE, QC H9R 1A8  
 TEL: 1-800-361-2260  
 FAX: 1-888-626-0606

1 2 3 4 5 6 7 8 9 10 11 12 13 14 15 16 17 18 19 20 21 22 23 24 25 26 27 28 29 30 31 32 33 34 35 36 37 38 39 40 41 42 43 44 45 46 47 48 49 50