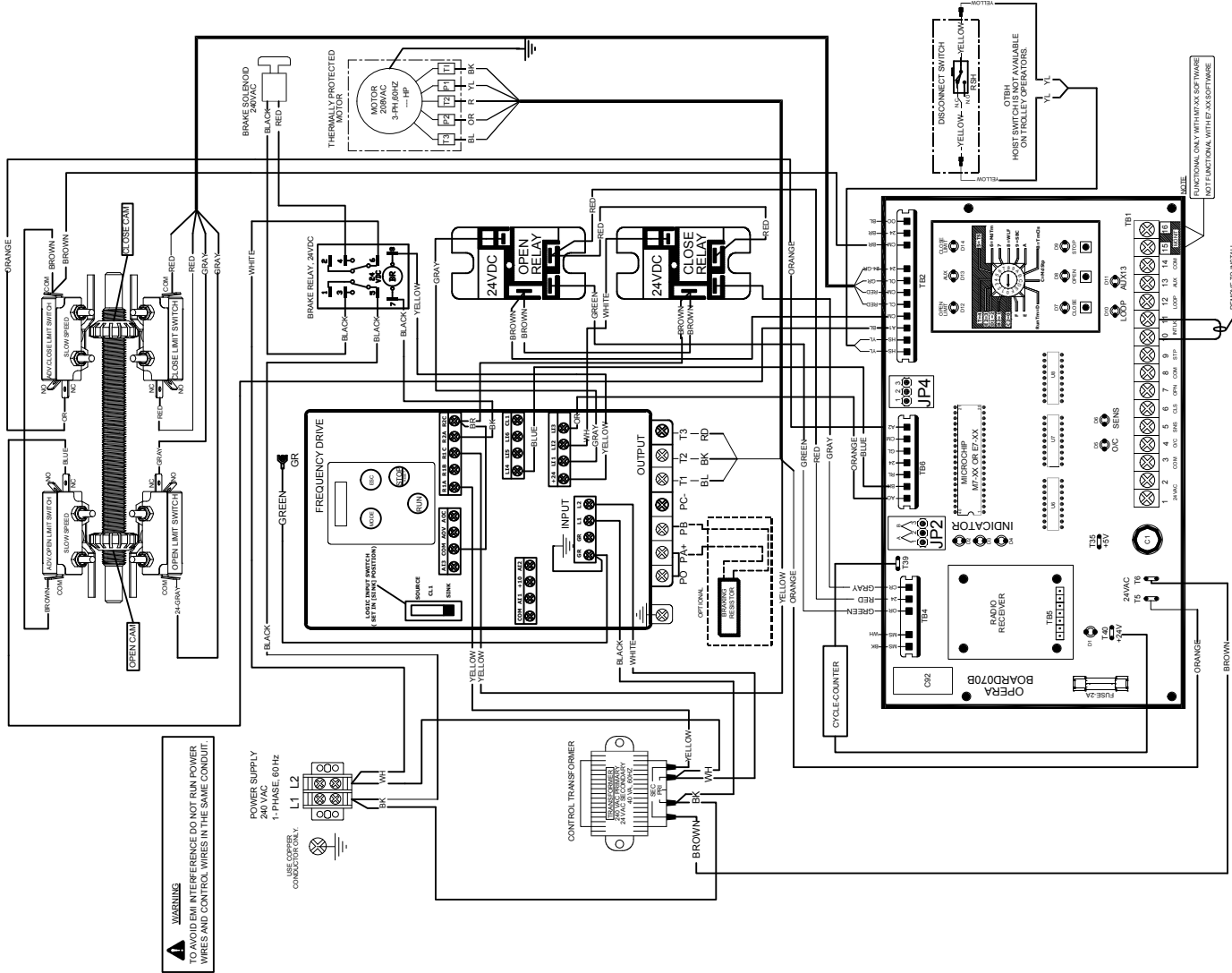
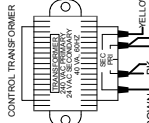


WIRING DIAGRAM - VARIABLE FREQUENCY DRIVE, 1-PHASE, 240VAC, 60HZ



**WARNING**  
TO AVOID EMI INTERFERENCE DO NOT RUN POWER WIRES AND CONTROL WIRES IN THE SAME CONDUIT.

POWER SUPPLY  
240 VAC  
1-PHASE 60Hz  
L1 L2  
N  
GND



**ROTARY SWITCH SETTINGS**

**WIRING TYPES**

- 0** C2 WIRING
- 1** B2 WIRING
- 2** D1 WIRING
- 3** E2 WIRING
- 4** T WIRING
- 5** TS WIRING

**PROGRAM SETTINGS**

- 6** MID-STOP TIMER TO CLOSE
- 8** WARNING LIGHT TIMER
- 9** SBC SINGLE BUTTON CONTROL
- B** TIMER TO CLOSE
- C** MID-STOP
- D** RUN-TIMER

**NOTE-**  
FOR ROTARY SWITCH SETTINGS AND PROGRAMMING AND PROGRAMMING INSTRUCTIONS REFER TO INSTRUCTION MANUAL

**EXTERNAL WIRING**

**3-POSITION KEY SW 4-SPRING RETURN TO CENTRE**

**KEY-SWITCH**

**MONITORED PHOTOCELL**

**ON BOARD JUMPER SETTINGS**

DISCONNECT SWITCH	PRESENT	NOT PRESENT
JP4	1, 2, 3	2, 3
JP2	1, 2, 3	2, 3

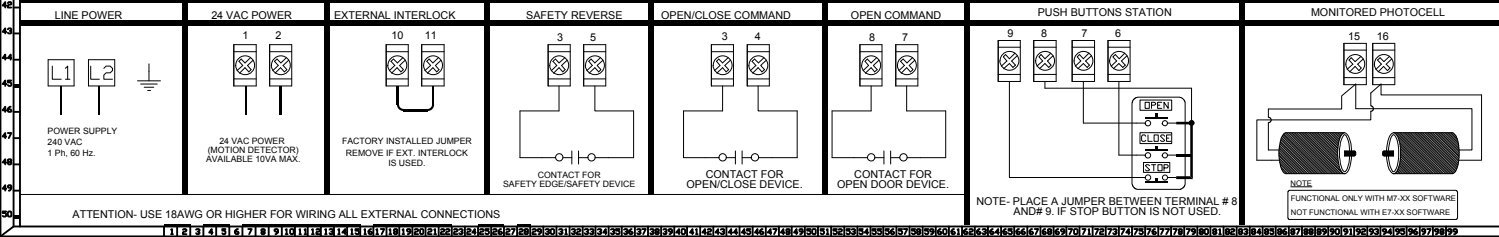
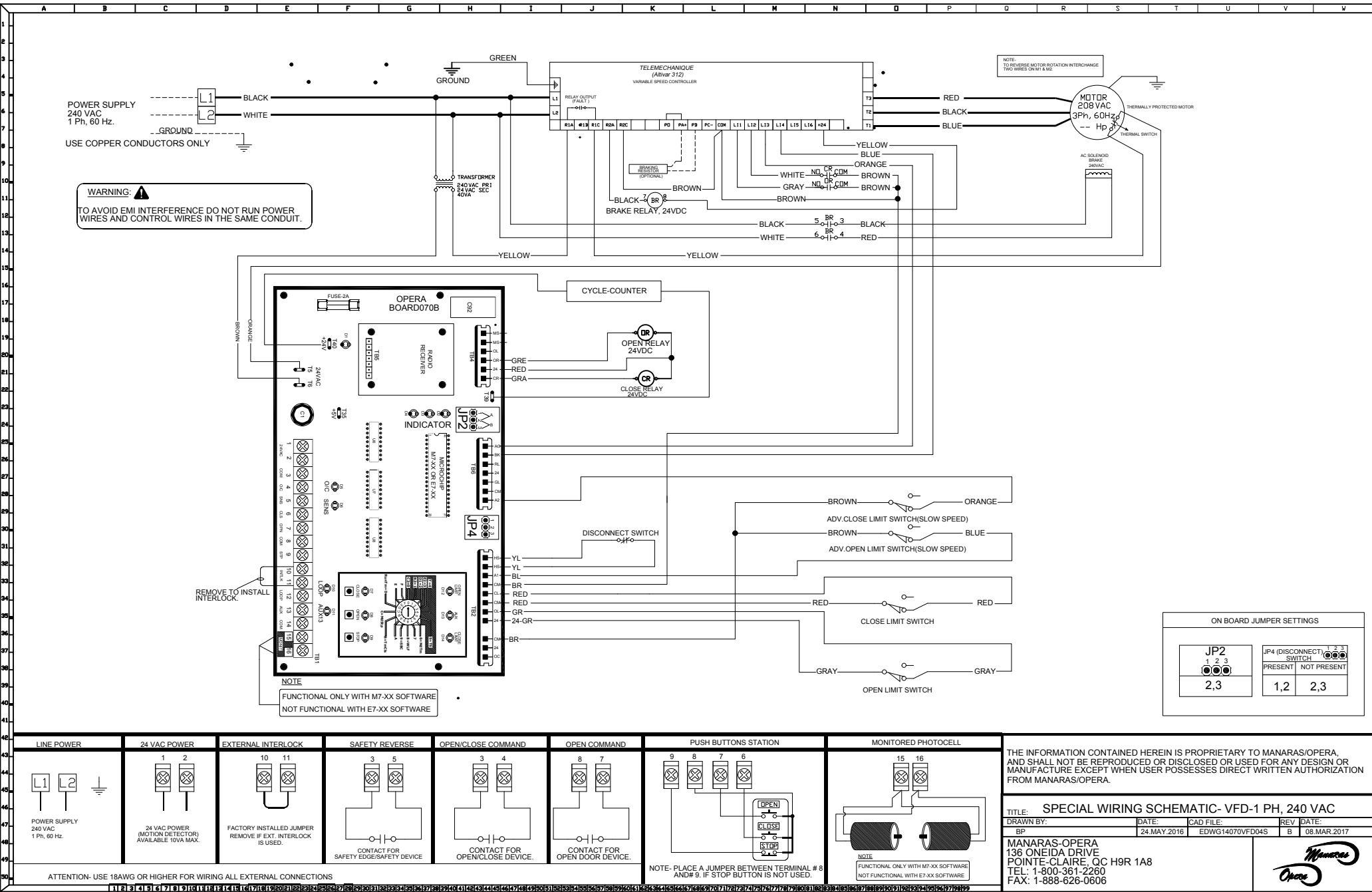
**CAUTION**  
PLACE A JUMPER BETWEEN TERMINAL #6 AND #9, IF STOP BUTTON IS NOT USED.

**WARNING**  
① - USE 18AWG OR HIGHER FOR WIRING ALL EXTERNAL CONNECTIONS  
② - MOTORIZED DOORS CAN CAUSE SERIOUS INJURIES OR DEATH. MANARAS STRONGLY RECOMMENDS THE USE OF ENTRAPMENT PROTECTION SYSTEMS, ESPECIALLY IN THE CASE OF MOMENTARY CONTACT TO CLOSE AS IN B2 WIRING  
THE INFORMATION CONTAINED HEREIN IS PROPRIETARY TO MANARAS-OPERA AND SHALL NOT BE REPRODUCED OR DISCLOSED OR USED FOR ANY DESIGN OR MANUFACTURE EXCEPT WHEN USER POSSESSES DIRECT WRITTEN AUTHORIZATION FROM MANARAS-OPERA

**TITLE: SPECIAL WIRING DIAGRAM, VFD- 1-PH, 240VAC**

DRAWN BY: BP DATE: 24.05.2016 CAD FILE: EDWG1407VFD04 REV: C 08.MAR.2017

MANARAS-OPERA  
136 ONEIDA DRIVE  
POINT ECLAIR, MO 63003  
TEL: 1-888-626-2600  
FAX: 1-888-626-0600



THE INFORMATION CONTAINED HEREIN IS PROPRIETARY TO MANARAS/OPERA, AND SHALL NOT BE REPRODUCED OR DISCLOSED OR USED FOR ANY DESIGN OR MANUFACTURE EXCEPT WHEN USER POSSESSES DIRECT WRITTEN AUTHORIZATION FROM MANARAS/OPERA.

**TITLE: SPECIAL WIRING SCHEMATIC- VFD-1 PH, 240 VAC**

DRAWN BY: BP	DATE: 24.MAY.2016	CAD FILE: EDWG14070VFD04S	REV: B	DATE: 08.MAR.2017
--------------	-------------------	---------------------------	--------	-------------------

MANARAS-OPERA  
136 ONEIDA DRIVE  
POINTE-CLAIRE, QC H9R 1A8  
TEL: 1-800-361-2260  
FAX: 1-888-626-0606