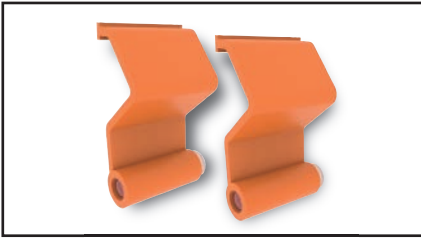


# Entrapment Protection Devices



## Monitored Non-Contact Sensing Edges

### PHOTO 067A



- Monitored Opto Sensing Edge
- Nema 4 enclosure, Class 2, IP65
- Infrared Thru-beam type
- Housing Material: PVC
- Environment: Nema 4/12
- Operation Temp.: -40°C to 85°C (-40°F to 185°F)
- Approx. 30' range
- Power Supply: 8-30 Vac / 12-42 Vdc
- Dimensions: 2.75" x 2.0" x 1.25"
- Includes: Transmitter and Receiver units, 15' coil cord, Z-Flap holders, junction box, hardware kit
- For Non-Monitored function, order PHOTO067 (INTERFACE005 included)

### PHOTO 068C



- Monitored Opto Sensing Edge
- Nema 4 enclosure, Class 2, IP65
- Infrared Thru-beam type
- Housing Material: Aluminum
- Environment: Nema 4/12
- Operation Temp.: -40°C to 85°C (-40°F to 185°F)
- Approx. 30' range
- Power Supply: 8-30 Vac / 12-42 Vdc
- Dimensions: 12.38" x 0.5" x 0.5"
- Includes: Transmitter and Receiver units, 15' coil cord, junction box, mounting brackets
- For 50' of connection wire included, order PHOTO068D
- For Non-Monitored function, order PHOTO068A (INTERFACE005 included)

### PHOTO 068D



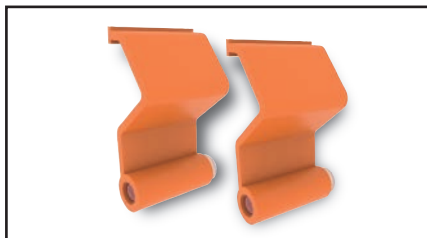
- Monitored Opto Sensing Edge
- Nema 4 enclosure, Class 2, IP65
- Infrared Thru-beam type
- Housing Material: Aluminum
- Environment: Nema 4/12
- Operation Temp.: -40°C to 85°C (-40°F to 185°F)
- Approx. 50' range
- Power Supply: 8-30 Vac / 12-42 Vdc
- Dimensions: 12.38" x 0.5" x 0.5"
- Includes: Transmitter and Receiver units, 15' coil cord, junction box, mounting brackets
- For 30' of connection wire included, order PHOTO068C
- For Non-Monitored function, order PHOTO068B (INTERFACE005 included)

# Entrapment Protection Devices



## Non-Monitored Non-Contact Sensing Edges

### PHOTO 067



- Non-Monitored Opto Sensing Edge
- Nema 4 enclosure, Class 2, IP65
- Infrared Thru-beam type
- Housing Material: PVC
- Environment: Nema 4/12
- Operation Temp.: -40°C to 85°C (-40°F to 185°F)
- Approx. 30' range
- Power Supply: 8-30 Vac / 12-42 Vdc
- Dimensions: 2.75" x 2.0" x 1.25"
- Includes: Transmitter and Receiver units, 15' coil cord, Z-Flap holders, junction box, hardware kit, interface module INTERFACE005
- For Monitored function, order PHOTO067A

### PHOTO 068A



- Non-Monitored Opto Sensing Edge
- Nema 4 enclosure, Class 2, IP65
- Infrared Thru-beam type
- Housing Material: Aluminum
- Environment: Nema 4/12
- Operation Temp.: -40°C to 85°C (-40°F to 185°F)
- Approx. 30' range
- Power Supply: 8-30 Vac / 12-42 Vdc
- Dimensions: 12.38" x 0.5" x 0.5"
- Includes: Transmitter and Receiver units, 15' coil cord, junction box, interface module INTERFACE005, mounting brackets
- For 50' of connection wire included, order PHOTO068B
- For Monitored function, order PHOTO068C

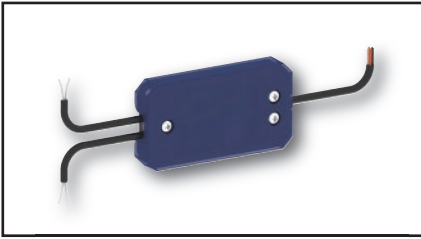
### PHOTO 068B



- Non-Monitored Opto Sensing Edge
- Nema 4 enclosure, Class 2, IP65
- Infrared Thru-beam type
- Housing Material: Aluminum
- Environment: Nema 4/12
- Operation Temp.: -40°C to 85°C (-40°F to 185°F)
- Approx. 50' range
- Power Supply: 8-30 Vac / 12-42 Vdc
- Dimensions: 12.38" x 0.5" x 0.5"
- Includes: Transmitter and Receiver units, 15' coil cord, junction box, interface module INTERFACE005, mounting brackets
- For 30' of connection wire included, order PHOTO068A
- For Monitored function, order PHOTO068D

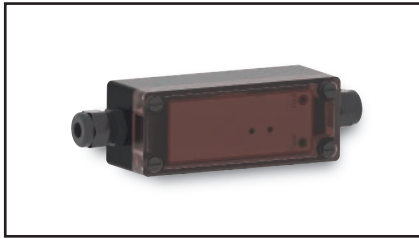
## Components & Accessories

### INTERFACE 003



- Y-connect Signal Merging Interface Module
- To merge two monitored photo-electric cells on the same monitored input on the ECB
- UL325 Recognized Component
- Exterior / Interior use
- Nema 4 enclosure
- Housing Material: ABS/PA6 GF30/TPE
- Operation Temp.: -23°C to 77°C (-13°F to 167°F)
- Power Supply: 24 VAC/VDC - 15mA
- Dimensions: 1.5" x 3" x 0.5"
- Includes: 1 interface module unit
- Compatible with: PHOTO061, PHOTO062, PHOTO065, PHOTO067, PHOTO068, PHOTO070, LIGHTCURTAIN001, LIGHTCURTAIN002

### INTERFACE 005



- Interface Module
- Controller for non-contact opto sensing edge
- UL325 Recognized Component
- Indoor use
- Nema 4 enclosure
- Housing Material: Polycarbonate
- Operation Temp.: -18°C to 55°C (-0°F to 131°F)
- Power Supply: 12-24 VAC/VDC - 50mA
- Dimensions: 1.75" x 1.75" x 6.63"
- Includes: 1 interface module unit, mounting screws
- Included with: PHOTO067, PHOTO068A/B, LIGHTCURTAIN003, LIGHTCURTAIN004