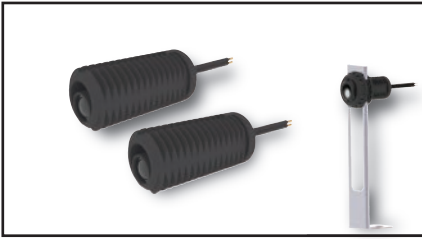


# Entrapment Protection Devices



## Monitored Photoelectric Cells

### PHOTO 070



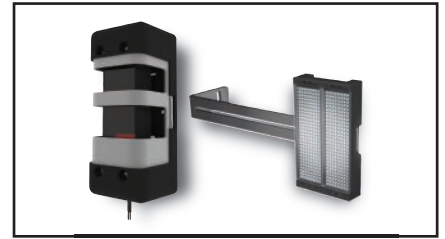
- Monitored
- UL325 Recognized Component
- Thru-beam type
- Approx. 5'-45' range
- Indoor use
- Nema 1 enclosure
- Housing Material: ABS-PC blend
- Operation Temp.: -12°C to 74°C (-10°F to 165°F)
- Power Supply: Self-powered by ECB main controller
- Dimensions: 2.13" x 1.5" Ø
- Includes: Transmitter/Receiver units, 30' of connection wire, L shape mounting brackets, hardware kit

### PHOTO 061



- Monitored
- UL325 Recognized Component
- Thru-beam type
- Approx. 5' to 45' range
- Harsh environments
- Nema 4X, IP65 enclosure
- Housing Material: Thermoplastic Elastomer (TPE)
- Operation Temp.: -25°C to 74°C (-13°F to 165°F)
- Power Supply: Self-powered by ECB main controller
- Dimensions: 6" x 2" x 1.25"
- Includes: Transmitter/Receiver units, 3' of connection wire, soft brackets, L shape mounting brackets, hardware kit
- For 50' of connection wire included, order PHOTO061A
- For Reflection hood, order HOOD001

### PHOTO 065



- Monitored
- UL325 Recognized Component
- Retro-reflective type
- Approx. 5' to 40' range
- Harsh environments
- Nema 4X, IP65 enclosure
- Housing Material: Polyamide & Steel
- Operation Temp.: -30°C to 60°C (-22°F to 140°F)
- Power Supply: Self-powered by ECB main controller
- Dim. Photocell: 1.75" x 4.25" x 1.75"
- Dim. Reflector: 2" x 3.5" x 0.5"
- Includes: Photocell, Reflector, 6.5' of connection wire, L shape mounting brackets, hardware kit
- For connection kit (1/2 NPT gland, 6.3' of 0.25" conduit, junction box) included, order PHOTO065A

# Entrapment Protection Devices



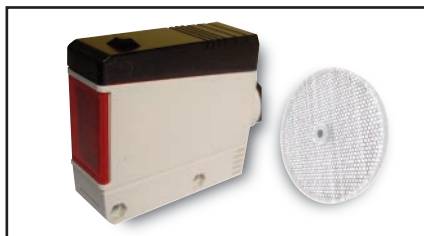
## Non-Monitored Photoelectric Cells

### PHOTO 008\_



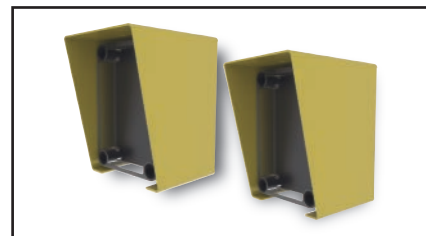
- Photoelectric Cells & Interface Module
- Renders any Monitored Photocell Compatible with Non-Monitored or Electromechanical Operators (operators built prior to UL 325 2010 revision)
- Various combo options available: Interface Module & PHOTO070 or PHOTO061 or PHOTO065, etc

### PHOTO 060



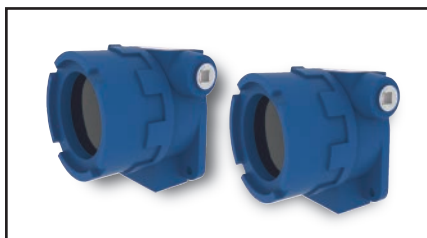
- Non-Monitored (NO/NC relay output)
- UL325 Recognized Component
- Retro-reflective type
- Approx. 39' range
- Exterior / Interior use
- Nema 4/12, IP67 enclosure
- Housing Material: Reinforced ABS-PC
- Operation Temp.: -25°C to 55°C (-13°F to 131°F)
- Power Supply: 21.6-264 VAC 50/60 Hz // 10.8-265 VDC
- Dim. Photocell: 0.98" x 2.56" x 3.19"
- Dim. Reflector: 3" Ø
- Includes: Photocell, 3" Reflector
- For replacement Reflector, order PHOTO024

### PHOTO 045



- Non-Monitored (NO/NC relay output)
- Thru-beam type
- Approx. 3' - 115' range
- Exterior / Interior use
- Nema 4X enclosure
- Housing Material: Polystyrene & Polycarbonate cover (photocells), Anodized aluminum (protective hood)
- Operation Temp.: -40°C to 77°C (-40°F to 170°F)
- Power Supply: 12 to 24 VAC 50/60 Hz // 12 to 24 VDC
- Dimensions: 3.7" x 2.56" x 2.24"
- Includes: Transmitter/Receiver units, protective hoods

### PHOTO 059



- Non-Monitored (NO/NC relay output)
- Thru-beam type
- Approx. 3' to 115' range
- Classified hazardous location
- Nema 4X & 7 enclosure, NEC Class I Groups B/C/D, Class II Groups E/F/G, Class III, EExd IIC
- Housing Material: Aluminum cast with epoxy coating
- Operation Temp.: -40°C to 77°C (-40°F to 170°F)
- Power Supply: 12-24 VAC 50/60 Hz // 12-24 VDC
- Dimensions: 4.69" x 4.5" x 3.44"
- Includes: Transmitter/Receiver units

# Entrapment Protection Devices



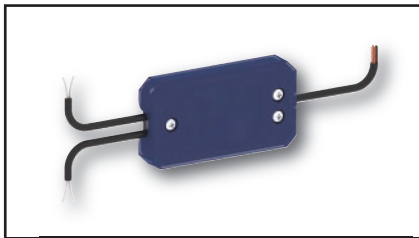
## Components & Accessories

### INTERFACE 001



- Interface Module
- Enables the connection of monitored photoelectric cells to an ECB or to an Electromechanical control operator without monitoring function
- Indoor use
- Nema 1 enclosure
- Housing Material: Plastic
- Operation Temp.: -23°C to 77°C (-10°F to 170°F)
- Power Supply: 24 VAC/VDC
- Dimensions: 4.75" x 2.62" x 1.34"
- Includes: 1 interface module unit
- Compatible with: PHOTO061, PHOTO062, PHOTO065, PHOTO070

### INTERFACE 003



- Y-connect Signal Merging Interface Module
- To merge two monitored photo-electric cells on the same monitored input on the ECB
- UL325 Recognized Component
- Exterior / Interior use
- Nema 4 enclosure
- Housing Material: ABS/PA6 GF30/TPE
- Operation Temp.: -23°C to 77°C (-13°F to 167°F)
- Power Supply: 24 VAC/VDC - 15mA
- Dimensions: 1.5" x 3" x 0.5"
- Includes: 1 interface module unit
- Compatible with: PHOTO061, PHOTO062, PHOTO065, PHOTO067, PHOTO068, PHOTO070, LIGHTCURTAIN001, LIGHTCURTAIN002

### HOOD 001



- Sunlight Reflection Protection Hood
- To be installed on the Receiver unit of compatible thru-beam type photocells to increase transmission accuracy
- Dimensions: 1.5" x 1" Ø
- Includes: 1 hood, hardware
- Compatible with: PHOTO061 Receiver unit

### HOOD 002



- Sunlight Lens Tube
- To be installed on Receiver unit of compatible thru-beam type photocells to increase transmission accuracy
- Dimensions: 0.71" x 0.47" Ø
- Includes: 1 sunlight lens tube
- Compatible with: PHOTO062

### PHOTO 024



- Reflector
- Increases range of compatible retro-reflective type photocells
- Dimensions: 3" Ø
- Includes: 1 reflector
- Compatible with: PHOTO060