



# MGHW/C

# Jackshaft Operator

Architectural Shop Drawing Heavy-Duty Industrial Gear Head  
 Nema 4/12 - Damp Environment / Oil Tight / Dust Tight  
 Nema 4X - Corrosive Environment

## Project Details

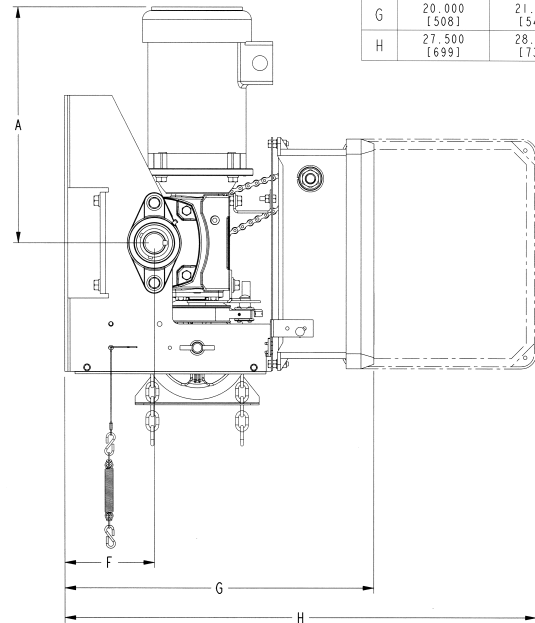
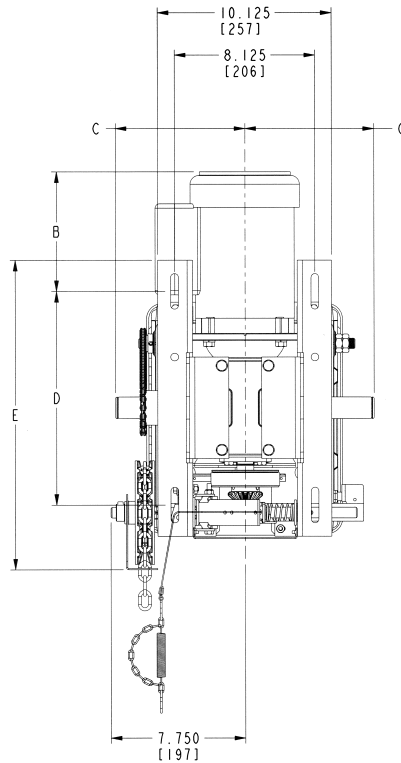
Date: \_\_\_\_\_  
 Drawing No.: \_\_\_\_\_  
 Architect/Engineer: \_\_\_\_\_  
 Customer: \_\_\_\_\_

Page: \_\_\_\_\_ of \_\_\_\_\_  
 Project No.: \_\_\_\_\_  
 Project Name: \_\_\_\_\_  
 Contractor: \_\_\_\_\_

## Dimensions and Ratings

Motor Amperage Rating – Nema 4/12					
HP	Voltage - Phase				
	120V - 1PH	240V - 1PH	208/240V - 3PH	480V - 3PH	600V - 3PH
½	6,6	3,3	2,1	1,1	0,9
¾	11,0	2,7	2,8	1,4	1,1
1	13,4	6,7	3,2	1,6	1,3
1,5	18,0	9,0	4,8	2,4	2,0
2			6,0	2,9	2,3
3			8,5	4,1	3,4
5			15,0	6,6	5,2

Motor Amperage Rating – Nema 4X					
HP	Voltage - Phase				
	120V - 1PH	240V - 1PH	208/240V - 3PH	480V - 3PH	600V - 3PH
½	8,0	4,0	2,1	0,8	0,6
¾	11,0	5,5	2,7	1,1	0,9
1	12,8	6,4	3,5	1,6	1,3
1,5	18,0	9,0	4,6	2,1	1,7
2			6,5	3,1	2,2
3			8,5	4,1	3,3
5			15,4	7,1	5,7



	UP TO 1.5 HP	2 TO 5 HP
A	16.625 MAX. [422]	20.250 MAX. [514]
B	10.000 MAX. [254]	14.000 MAX. [356]
C	7.500 [191]	8.000 [203]
D	12.375 [314]	12.625 [321]
E	18.000 [457]	17.875 [454]
F	5.250 [133]	5.875 [149]
G	20.000 [508]	21.375 [543]
H	27.500 [699]	28.875 [733]

Reg. T.M. 9141-0720 Québec Inc.

## Ordering Specifications

Quantity: \_\_\_\_\_  
 Horsepower: \_\_\_\_\_  
 Phase: \_\_\_\_\_

Model: \_\_\_\_\_  
 Volts: \_\_\_\_\_  
 Hertz: \_\_\_\_\_



# MGHW/C

# Jackshaft Operator

Architectural Shop Drawing Heavy-Duty Industrial Gear Head  
Nema 4/12 - Damp Environment / Oil Tight / Dust Tight  
Nema 4X - Corrosive Environment

---

Door Type: \_\_\_\_\_  
Door Shaft Height: \_\_\_\_\_ H  
Amount of High Lift: \_\_\_\_\_ H  
Drum Type/Size: \_\_\_\_\_  
Barrel Diameter: \_\_\_\_\_ Ø

Door Width/Height: \_\_\_\_\_ W x \_\_\_\_\_ H  
Drive Sprocket: \_\_\_\_\_  
Drive Sprocket & Chain: \_\_\_\_\_  
Hand Chain: \_\_\_\_\_  
Friction Clutch: \_\_\_\_\_

Operator Nema Rating: \_\_\_\_\_  
3-Push Button Station Rating: \_\_\_\_\_

Qty 3-PB Station(s)/Operator: \_\_\_\_\_  
(One 3-PB station supplied/operator unless otherwise noted)

Motor Circuit Type: \_\_\_\_\_

Photo Cell Upgrade: \_\_\_\_\_  
(Nema-1 rating supplied unless otherwise noted)

## Additional Equipment & Options

---

---

---

*Refer to the operator's Specification Sheet and/or Wiring Diagram for General Information*