



# Rapido RVH

# Jackshaft Operator

## Architectural Shop Drawing

## High-Speed Vinyl Rolling Doors and Rolling Bug Screens

### Project Details

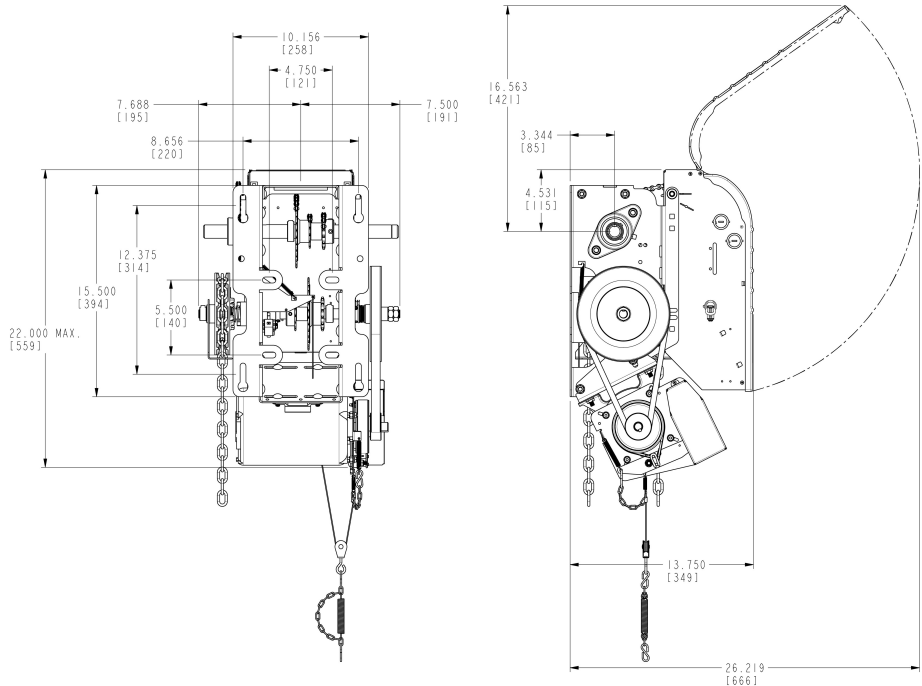
Date: \_\_\_\_\_  
 Drawing No.: \_\_\_\_\_  
 Architect/Engineer: \_\_\_\_\_  
 Customer: \_\_\_\_\_

Page: \_\_\_\_\_ of \_\_\_\_\_  
 Project No.: \_\_\_\_\_  
 Project Name: \_\_\_\_\_  
 Contractor: \_\_\_\_\_

### Dimensions & Ratings

Motor Amperage Rating		
HP	Voltage - Phase	
	120V - 1PH	240V - 1PH
1	16,4	8,9

Reg. T.M. 9141-0720 Québec Inc.



### Ordering Specifications

Quantity: \_\_\_\_\_  
 Horsepower (HP): 1 HP  
 Phase: 1 Phase

Model: \_\_\_\_\_  
 Volts (V): \_\_\_\_\_  
 Hertz (Hz): 60 Hz

Door Type: Rolling Vinyl Door  
 Door Shaft Height: \_\_\_\_\_ H  
 Door Keyway Size: \_\_\_\_\_ IN  
 Barrel Diameter (Naked): \_\_\_\_\_ Ø  
 Barrel Diameter (Door Open): \_\_\_\_\_ Ø  
 Barrel Diameter (Door Closed): \_\_\_\_\_ Ø

Door Width/Height: \_\_\_\_\_ W x \_\_\_\_\_ H  
 Drive Sprocket: \_\_\_\_\_  
 Hand Chain: \_\_\_\_\_  
 Avg. Door Speed Req.: \_\_\_\_\_ IN/SEC  
 Weight of Bottom Bar: \_\_\_\_\_ LBS

Qty 3-PB Station(s)/Operator: \_\_\_\_\_  
 (One 3-PB station – Nema 1 type - supplied/operator unless otherwise noted)

3-Push Button Station Rating: \_\_\_\_\_

Motor Circuit Type: Electronic / Monitoring of Primary Entrapment Protection Device



# Rapido RVH

## Jackshaft Operator

Architectural Shop Drawing

High-Speed Vinyl Rolling Doors and Rolling Bug Screens

---

### Additional Equipment & Options

Lined area for additional equipment and options.

*Refer to the operator's Specification Sheet and/or Wiring Diagram for General Information*