


## LIGHTCURTAIN001

MONITORED LIGHT CURTAIN  
(MLC-K36)

In partnership with



### STANDARD FEATURES

- Designed for sectional doors and coiling doors.
- Monitored primary external entrapment protection device.
- Compatible with the Electronic Control Board 070M.
- UL325 recognized component. 
- 3 ft (0.91 m) protection height.
- Environmental waterproof (IP67) protection rating.
- Includes mounting brackets and 3 ft (0.91m) of cable for easy installation.

### OPTIONS (SEE REVERSE)

- Light Curtain with 6 ft (1.8 m) protection height available.
- Non-Monitored version available.
- Compatible with ancillary entrapment protection devices.



- **Easy to Install**
- **Simplified wiring**
- **Waterproof housing (IP67)**
- **No external interface box required**
- **ANSI/UL325 Recognized Component**

**LIGHTCURTAIN001 uses a series of thru-beam photo-eyes attached near the door track or guides and is designed to provide a dense invisible barrier of beams which, when interrupted, send an electrical signal to the operator's Electronic Control Board (BOARD070M) which reverses the door.**

**This light curtain has the ability to span up to 32 feet wide and 3 feet high and can be adapted to provide extended protection for the majority of commercial and industrial garage door applications.**



- MEMBER OF THE CANIMEX GROUP -

When you think  
Commercial Door OPERATORS,  
**just think OPERA.**

Manaras-Opera reserves the right to make specification or design changes without prior notice.

800-361-2260  
info@manaras.com  
www.manaras.com

# Product Specification Sheet

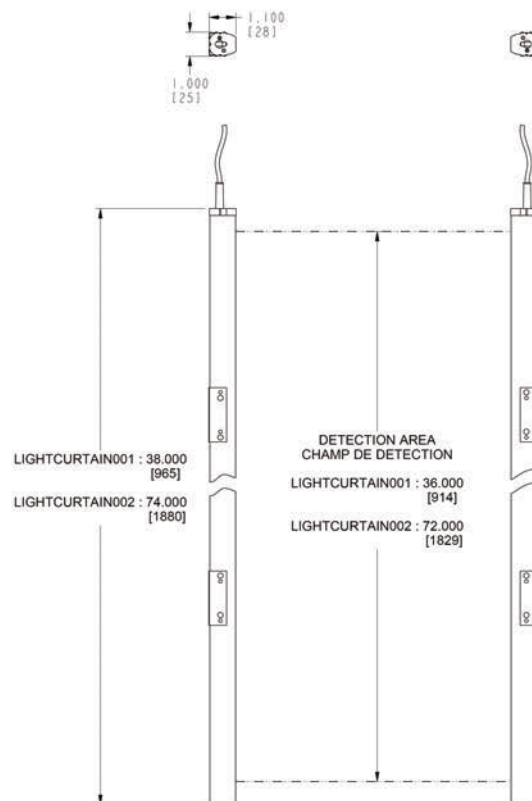
# LIGHTCURTAIN001

MONITORED LIGHT CURTAIN  
(MLC-K36)

## TECHNICAL SPECIFICATIONS

Color:	Black
Max. Operating Range:	32 ft (9.8 m)
Min. Operating Range:	6 ft (1.8 m)
No. of Elements:	8
Max. Ambient Light:	>100,000 Lux
Aperture Angle:	Tx: 10° and Rx: 20°
Electrical Diagram:	Monitored configuration
Cross Section:	1.0 in x 1.1 in (25 mm x 28 mm)
Max. Physical Height:	38 in (97 cm)
Max. Protection Height:	36 in (92 cm)
Housing Material:	PVC over aluminum
Enclosure Rating:	IP67
Temperature Range:	-40 °F to +140 °F (-40 °C to +60 °C)

## DIMENSIONS



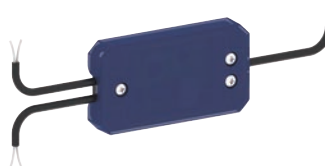
## OPTIONS



LIGHTCURTAIN002  
Monitored Light Curtain  
6' (1.8 m) Protection Height



LIGHTCURTAIN003  
Non-Monitored Light Curtain  
3' (0.91m) Protection Height



INTERFACE003  
Y-Connecting Signal-Merging  
N4 Module



PHOTO061  
Photoelectric Cells N4X



- MEMBER OF THE CANIMEX GROUP -

Manaras-Opera reserves the right to make specification or design changes without prior notice.  
©2016 9141-0720 Québec Inc. All rights reserved. Reg. T.M. of 9141-0720 Québec Inc.

800-361-2260  
info@manaras.com  
www.manaras.com