

# Product Specification Sheet



## OTBH-A5DR

TROLLEY PREMIUM APARTMENT OPERATOR WITH SEPARATE CONTROL PANEL FOR SEMI-FAST DOORS

### STANDARD FEATURES

• **Electrical Supply:**

120V 60Hz nominal, mono-phase.

• **Motor:**

60Hz high starting torque, continuous-duty, 3 phase switchless motor, open drip proof, protected against overload.

• **Reduction:**

First step in reduction 4L/Ax section cogged V-belt drive, additional step by #41 chain and sprockets. Input shaft is 5/8", supported by cast iron flanged pillow block bearings. Output shaft is 1" with 1/4" keyway, supported by cast iron flanged pillow block bearings. Output shaft speed: 184 rpm standard for a door travel of 18"/s.

• **Drive and Trolley Assembly:**

#41 full roller chain drive. Dual, 12 gauge, pre-drilled galvanized tracks provided for doors up to 12Ft in height standard. Additional track lengths are available (max. door height acceptable for the operator limit system is 30Ft). Track spacers 3/4" steel shaft. Trolley made of cast aluminum alloy with chain tension adjustment device.

• **Clutch:**

Friction type, positioned on input shaft, easily adjustable from outside.

• **Brake:**

Electrically activated insulated drum-shoe type solenoid brake. Low vibration braking system provides positional stability and noise reduction.

• **Manual Operation:**

Quick release disconnect arm for manual push-up operation.

• **Electrical Enclosure:**

All electrical components are in a Nema 1 enclosure. Hinged electrical enclosure cover.

• **Limit System:**

Rotary-type oil-impregnated steel cams, commercial grade switches. Limit shaft is supported by self-lubricating bronze bushings for increased precision. Remains in time when there is a manual operation or after the motor has been removed.

• **Accu-cam® Feature:**

Precise and quick one-handed adjustment of the limits.

• **Corrosion Protection:**

Frame and control enclosure protected by baked on, long lasting enamel finish. All shafts protected by yellow chromate coating.

• **Mounting (Low Headroom Design):**

Ceiling-mounted with only 6.25" headroom clearance required below the tracks. Separate control panel ready for wall mounting.

• **Shipping Weight:**

Approx. 73 Lbs - 33 Kg (operator) + tracks + panel.

• **Warranty:**

2 Years.



### Adjustable Soft-Start and Soft-Stop

Improves the longevity of the complete door system

### 120V Single Phase Input/ 208V Three Phase Switchless Motor

### Low Vibration Braking System

Solenoid anti-vibration mounting provides positional stability and noise reduction

### Separate Control Panel

Control board and speed managing device

### Low Headroom Design

Requires only 6.25" of headroom clearance below the tracks

### Cast Iron Flanged Pillow Block Bearings

Support the input and the output shafts

**The OTBH-A5DR is a low headroom apartment type garage door operator designed for use on industrial standard lift sectional doors with high cycling daily frequency requirements.**

**The operator manages Soft-Starts and Soft-Stops for improved longevity of the complete door system and allows for a faster door speed at the same horsepower.**

**The operator incorporates a drum-shoe type solenoid brake and a low vibration braking system, which provides additional positional stability and noise reduction.**

**A separate control panel is provided, which includes a speed managing device and a Manaras-Opera Electronic Control Board.**



When you think  
Commercial Door OPERATORS,  
**just think OPERA.**

800-361-2260  
info@manaras.com  
www.manaras.com

## CONTROL OPTIONS

### • Electronic Control Board:



40VA class II transformer and non-volatile memory. Programmable speed control device. Features available: 1.5s delay on reverse, programmable maximum run timer, mid-stop, timer to close, advance close system, test buttons, reverse wiring detection and door lock sensor. Operating mode selectable on site: C2, B2, D1, E2, T or TS.

Certifications: CSA C22.2/0,0.4,14,94 and UL 50,508,508A.

Note: CSA C22.2-247.92 and UL325 apply to units intended to be used in ordinary locations in accordance with the Canadian Electrical Code, Part I and the National Electrical Code, NFPA 70, respectively.

## MAIN OPTIONS

### • Control Accessories:

Separate control panel terminal strip allows for the connection of 3-button stations (one supplied with the operator), non-monitored sensing edges, non-monitored photo cells, one push-button radio control (external strip), ceiling pull switches, key switches, loop detectors, external interlocks, plug-in radio card and universal auxiliary output module. 2A fuse protected 24V<sub>ac</sub> output is available for accessory power supply.

### • Environmental Modifications:

NEMA 4/12 and NEMA 4X operator enclosures.

### • Mechanical Modifications:

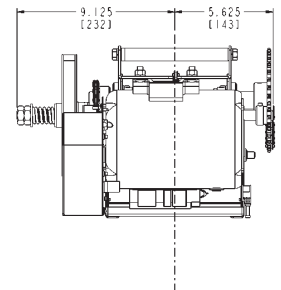
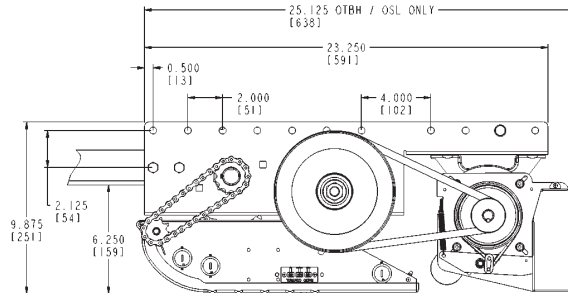
Dual trolley drive, trolley hoist, very heavy-duty front idler, mini depth, warning light wiring, etc...consult inside sales.

## DIMENSIONS

**Back Room:** Door height + 4'5" (1350 mm)

**Head Room For Tracks:** 5.625" (143 mm) above the highest point of door travel

**Separate Panel:** 1/2 HP - 12" x 10" x 5"  
(Trade size) 1 HP - 16" x 12" x 6"



## MOTOR SELECTION

### Maximum Size of Door in Square Feet

Horse Power	Sectional Doors				
	Steel 18 ga. ins.	Steel 18 ga. 20 ga. ins.	Wood Steel 20 ga. 22 & 24 ga. ins.	Aluminum Steel 22 & 24 ga.	Fiber Glass
1/2	196	245	314	343	392
1	294	392	490	564	613

General Guideline

## OPERATOR RANGE

### Current Consumption (Amp.)

Horse Power	120V 1 Ph	240V 1Ph	208/240V 3 Ph	480V 3 Ph	600V 3 Ph
1/2	8.0	4.0	2.1	1.0	0.8
1	13.6	6.8	4.4	2.1	1.6

General Guideline

