



# **INSTALLATION AND INSTRUCTION MANUAL**

**BRAKE012**

**GH & MGH**

**Retrofit Kit for Old Braking Systems**

## INSTRUCTIONS

BRAKE012 is usable on old GH or MGH units with aluminium brake shoes  
This kit is designed to replace the old braking system by the "new" one with a fiber brake band.

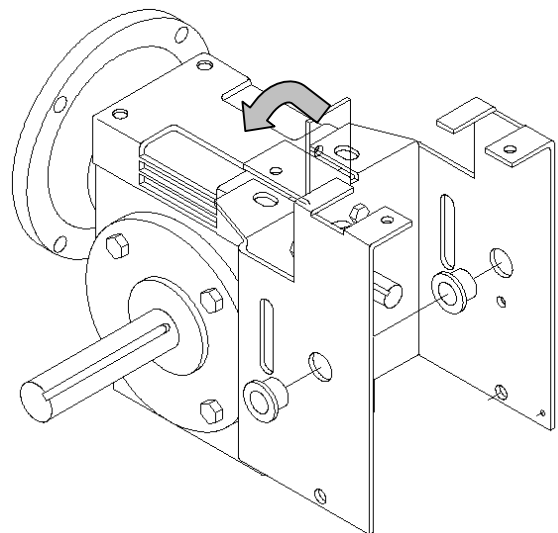
The kit is provided partially assembled.

The procedure to replace the old system is different depending on the unit: GH or MGH.

### GH units

(see old expl. view on p.4 and Kit expl.view on p.6)

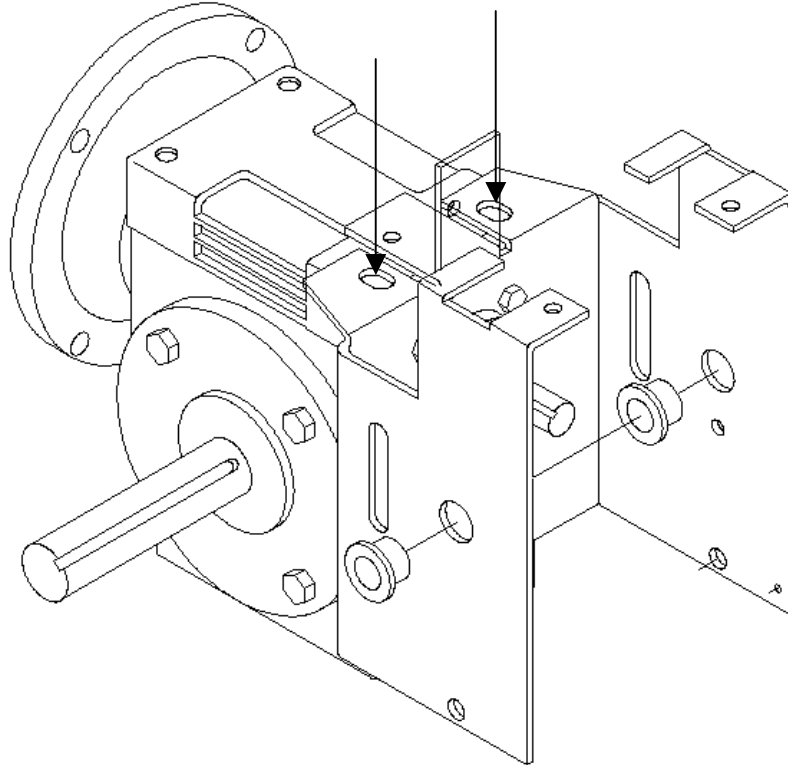
- 1) Remove from brake drum shaft:  
- bevel gear (#7 and 127), brake drum (#6) and washer (#65)  
(You may need to remove the hoist shaft (#18 and accessories) to perform this first step)
- 2) Remove brake shoes and hardware (bolts, nuts, washer and springs)  
(#49, 50, 62, 5, 4, 58, 54, 56, 44 and 46)
- 3) Remove brake lever and its hardware linked with the frame or with the control-box  
(bolts, nuts, washer and springs) (#10, 64, 14, 43, 50, 58 and 31)
- 4) Bend to the rear (near the reducer) the frame leg where it was bolted to the brake lever.



5) Remove the bolts and washer attaching the frame on the reducer (if it is the case on your unit) (#48, 52 and 55)

The machine is now ready to accept the new BRAKE012 replacement kit

6) Insert the kit in the frame and place it in such the position to bolt it with the removed (bolts at step 5) or use the bolts, washers and nuts (#2, 3 and 4) provided to bolt it on the frame horizontal legs.



7) Place the drum (#6) on the shaft, align it with the brake band and tighten the set-screw (#7).

8) Place the lever extension spring (#17) drilling a hole in the control-box (to receive bolt008 (#16) spring axle)

9) Replace (if it was removed) the hoist shaft and accessories. (you may have to use the pins provided with the kit)

10) Adjust the brake

## MGH units

(see old expl. view on p.5 and Kit expl.view on p.6)

1) Remove from brake drum shaft:

- bevel gear (#25 and 56)
- washer (#87 and 88)
- brake drum (#21)
- washer (#85)

(You may need to remove the hoist shaft (#24 and accessories) to perform this first step)

2) Remove brake support (#6) from the reducer, shoes and hardware (bolts, nuts, washer and springs), the brake lever and its hardware which are linked with the frame or with the control-box.

The machine is now ready to accept the new BRAKE012 replacement kit

3) Insert the kit and bolt it on the reducer at the same place where the old brake support was. Use the bolts, washers and nuts (#2, 3 and 4) in the kit

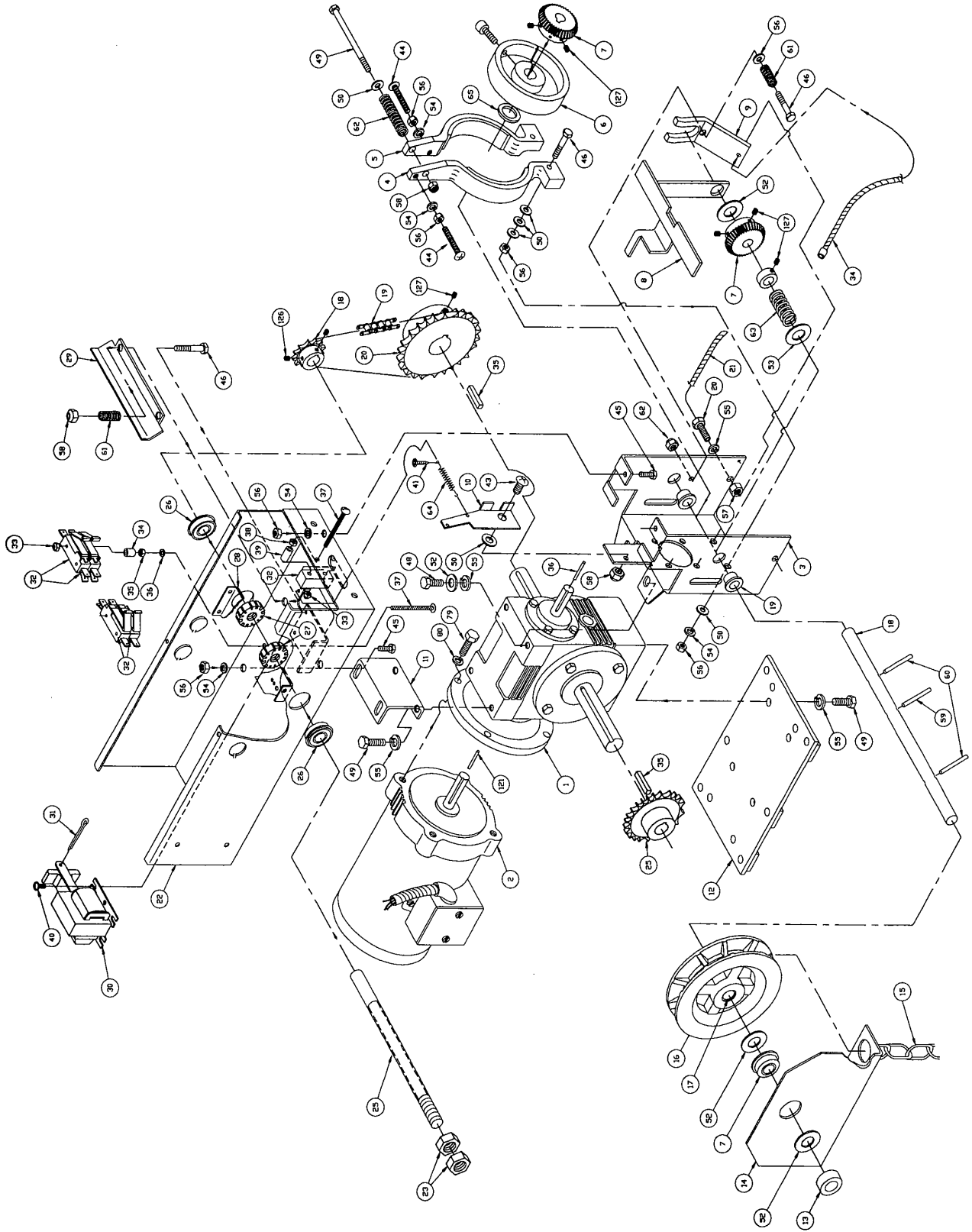
4) Place the drum (#6) on the shaft, align it with the brake band and tight the set-screw (#7).

5) Place the lever extension spring (#17) drilling a hole in the control-box (to receive bolt008 (#16) spring axle)

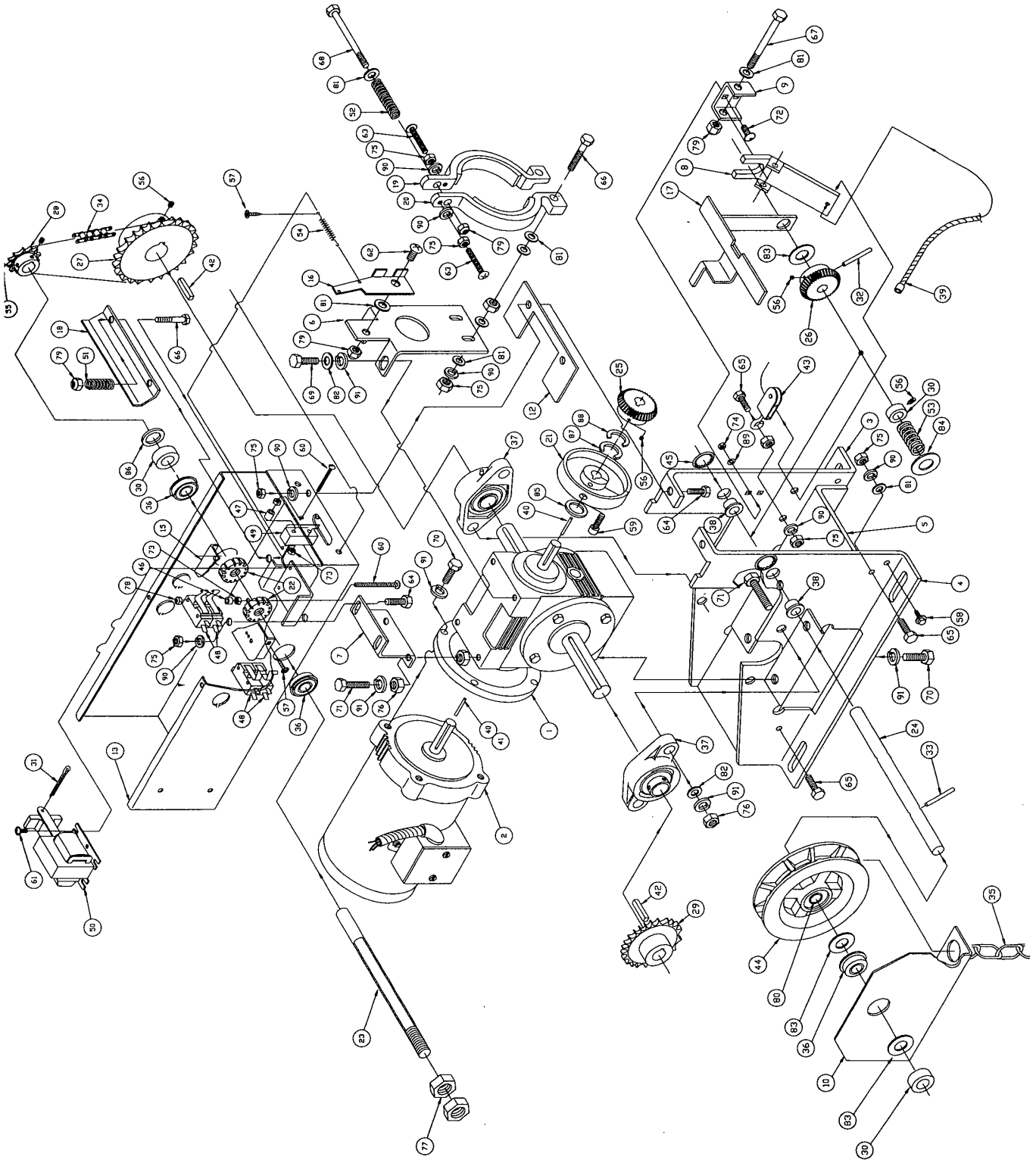
6) Replace (if it was removed) the hoist shaft and accessories. (you may have to use the pins provided with the kit)

7) Adjust the brake

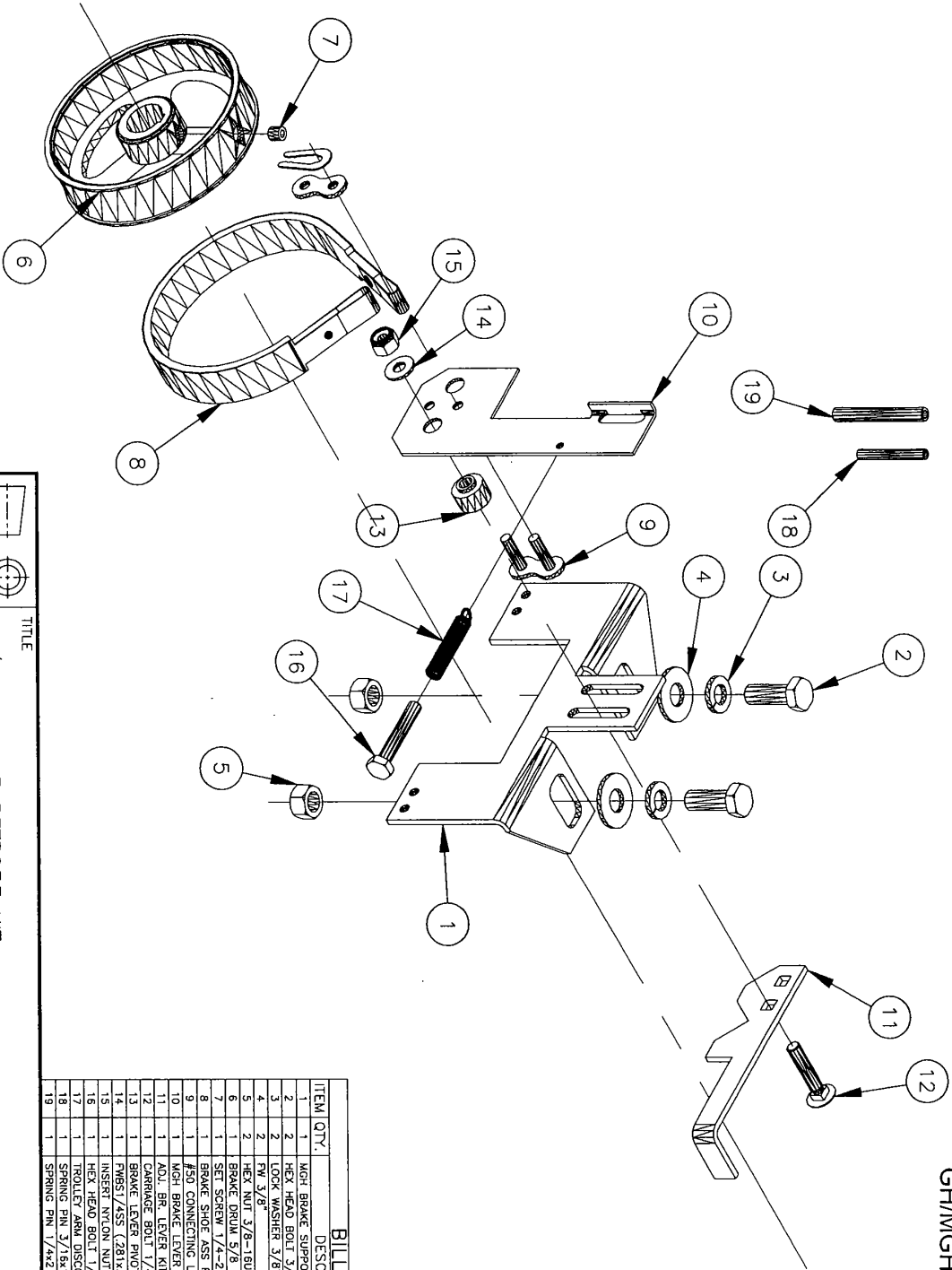
Old GH unit (e.g.)



Old MGH unit (e.g.)



BRAKE012  
GH/MGH BRAKE RETROFIT KIT



BILL OF MATERIAL

ITEM QTY.	DESCRIPTION	PART NUMBER	REV.
1	MGH BRAKE SUPPORT RED80	BRACKET189	B
2	HEX HEAD BOLT 3/8" x 1"	BOLT023	
2	LOCK WASHER 3/8"	WASHER030	
4	FW 3/8"	WASHER010	
5	HEX NUT 3/8-18UNC	NUT010	
6	BRAKE DRUM 5/8" WITH GROOVE	DRUM004	C
7	SET SCREW 1/4-20-5/16 KNURLED	SCREW001	
8	BRAKE SHOE ASS FOR STD BRAKE	BRAKEPART017	
9	#50 CONNECTING LINK	LINK011	
10	MGH BRAKE LEVER GALVANIZED	LEVER051	B
11	ADJ. BR. LEVER KIT RETROF.	LEVER076	
12	CARRIAGE BOLT 1/4" x 1-1/4"	BOLT083	
13	BRAKE LEVER PIVOT	BUSHING035	C
14	FM551/ASS (281X.625X.065)	WASHER006	
15	INSERT NYLON NUT 1/4-20UNC	NUT020	
16	HEX HEAD BOLT 1/4x1-1/2"	BOLT008	
17	TROLLEY ARM DISCONNECT SPRING	SPRING026	
18	SPRING PIN 3/16x1-1/2"	PIN007	
19	SPRING PIN 1/4x2"	PIN011	

MATERIAL

TITLE GH/MGH BRAKE RETROFIT KIT		PART NUMBER BRAKE012	
CAD FILE BRAKE012-X		DRAWN BY: CHRISTIAN CLAUDEL	
SCALE 1:1		DATE 2002.04.16	
GENERAL TOLERANCES IF NOT INDICATED		APPROVED BY: CHRISTIAN CLAUDEL	
HOLES Ø ±0.002		DATE 2002.04.16	
0-.6" ± 0.003 .6-1.2" ± 0.010 >1.2" ± 0.030		MANARAS AUTO DOORS INC. 136 ONEIDA DRIVE POINTE-CLAIRE QC H9R 1A8 TEL.: 514.426.1332 FAX : 514.426.1171	
THE INFORMATION CONTAINED HEREIN IS PROPRIETARY TO MANARAS AUTO DOORS INC. AND SHALL NOT BE REPRODUCED OR DISCLOSED OR USED FOR ANY DESIGN OR MANUFACTURE EXCEPT WHEN USER POSSESSES DIRECT WRITTEN AUTHORIZATION FROM MANARAS AUTO DOORS INC.			
REV. DATE BY APP DESCRIPTION			





## Commercial Door OPERATOR



Manaras-Opera is extending their well-known OPERA brand name across its entire line of Commercial Door OPERATORS. Over the years, the OPERA brand name has become synonymous with innovation and reliability. The high quality products you have come to expect from us will now be backed by the OPERA brand name.

**When you think Commercial Door OPERATORS, just think OPERA.**

Call us for more information:  
**1-800-361-2260**



"Easy to install. Easy to use. Year after year."

[www.manaras.com](http://www.manaras.com)