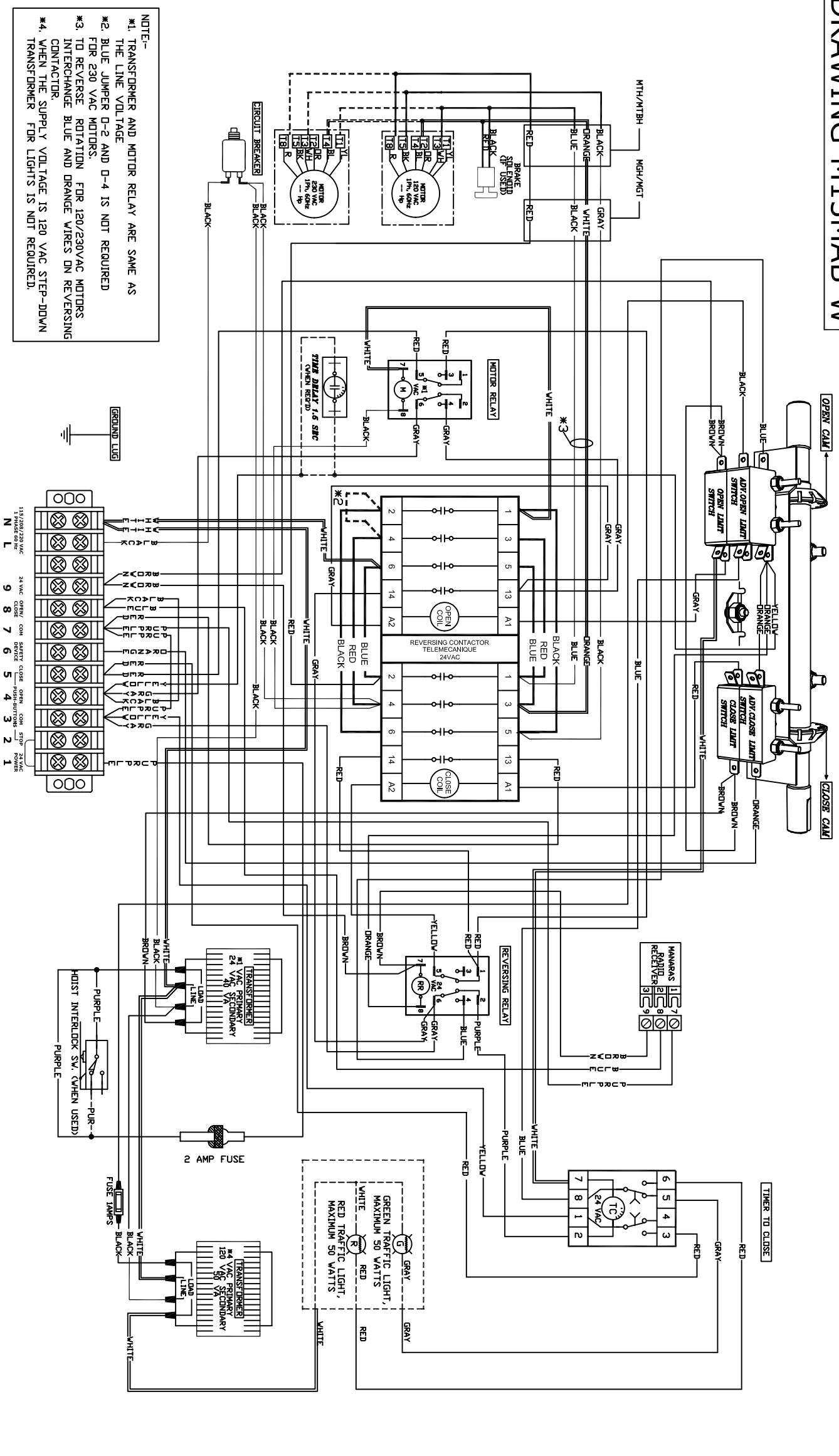
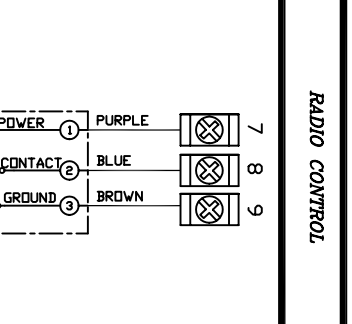
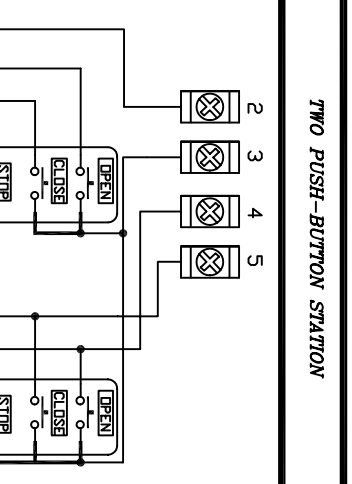
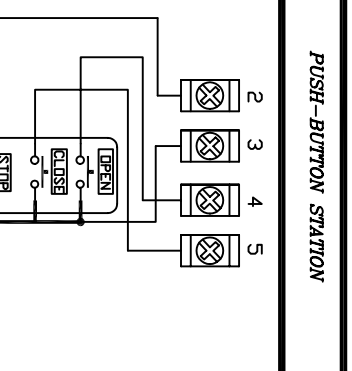


# DRAWING-M13MAB-W



NOTE--  
 #1. TRANSFORMER AND MOTOR RELAY ARE SAME AS THE LINE VOLTAGE  
 #2. BLUE JUMPER D-2 AND D-4 IS NOT REQUIRED FOR 230 VAC MOTORS.  
 #3. TO REVERSE ROTATION FOR 120/230VAC MOTORS INTERCHANGE BLUE AND DRANGE WIRES ON REVERSING CONTACTOR.  
 #4. WHEN THE SUPPLY VOLTAGE IS 120 VAC STEP-DOWN TRANSFORMER FOR LIGHTS IS NOT REQUIRED.

LINE POWER	24 VAC POWER	EXTERNAL INTERLOCK	SAFETY REVERSE	OPEN DOOR DEVICE
L N	1 9	1 2	3 6	7 8
POWER SUPPLY 115/230V 50 VAC 1 PH, 50 HZ	24 VAC POWER AVAILABLE 10VA MAX.	FACTORY INSTALLED JUMPER REMOVE IF EXT. INTERLOCK IS USED.	CONTACT FOR SAFETY EDGE/SAFETY DEVICE	CONTACT FOR OPEN DOOR DEVICE.



ATTENTION- USE 18AWG DR HIGHER FOR WIRING ALL EXTERNAL CONNECTIONS

ON SITE MODIFICATIONS  
 CONSTANT PRESSURE CLOSE

1. REMOVE THE RED WIRE FROM TERMINAL #7 AND PLACE IT ON TERMINAL #5

2. CONSTANT PRESSURE OPEN

1. REMOVE THE GRAY WIRE FROM TERMINAL #3 AND PLACE IT ON TERMINAL #4

3. WIRING FOR INSTANT STOP (ON SAFETY EDGE OR DEVICE)

1. REMOVE THE YELLOW WIRE FROM ADV. OPEN LIMIT SWITCH, AND CAP IT.  
 2. REMOVE THE BLUE WIRE FROM PIN #4 OR REVERSING RELAY(RR) AND CAP IT.

4. ADDING A TIME DELAY ON REVERSE C/W TIMER TO CLOSE

1. REMOVE THE YELLOW WIRE FROM THIS ADV. OPEN LIMIT SWITCH, CONNECT THIS WIRE TO ONE END OF THE-TIME-DELAY. 2. FROM OTHER END OF THE-TIME-DELAY, CONNECT BACK TO ADV. OPEN TERMINAL #4 AND #8. 3. REMOVE THE BLACK JUMPER FROM TERMINAL #4 AND #8. 4. MAKE A NEW WIRE FROM TERMINAL #8 AND CONNECT TO PIN #8 OF RR RELAY.

5. CONSTANT PRESSURE OPEN & CLOSE- D1 PERFORM THE MODIFICATION EXPLAINED IN THE NOTES, 1, 2 AND 3

6. ANY OTHER OPTIONS

FOR ANY OTHER OPTIONS LIKE, TIMER TO CLOSE, MID-STOP WIRING, LONG DISTANCE MODULE, OR ANY OTHER SPECIAL LOGIC SEQUENCE PLEASE CONSULT MANARAS/OPERA.

WIRING DIAGRAM FOR, MGH/MGT/MTB/MTBH 120/230 VAC, 1 PHASE MOTORS

TITLE	M13MAB-W	DES	BP	REV	E	DATE	12. FEB. 2007
PRODUCT	MANARAS-OPERA						
CLIENT	136 ONEIDA DRIVE						
ENGINEER	POINTE-CLAIRE, QC H9R 1A8						
DISTRIBUTOR	TEL: 1-800-361-2260						
	FAX: 1-888-626-0606						

