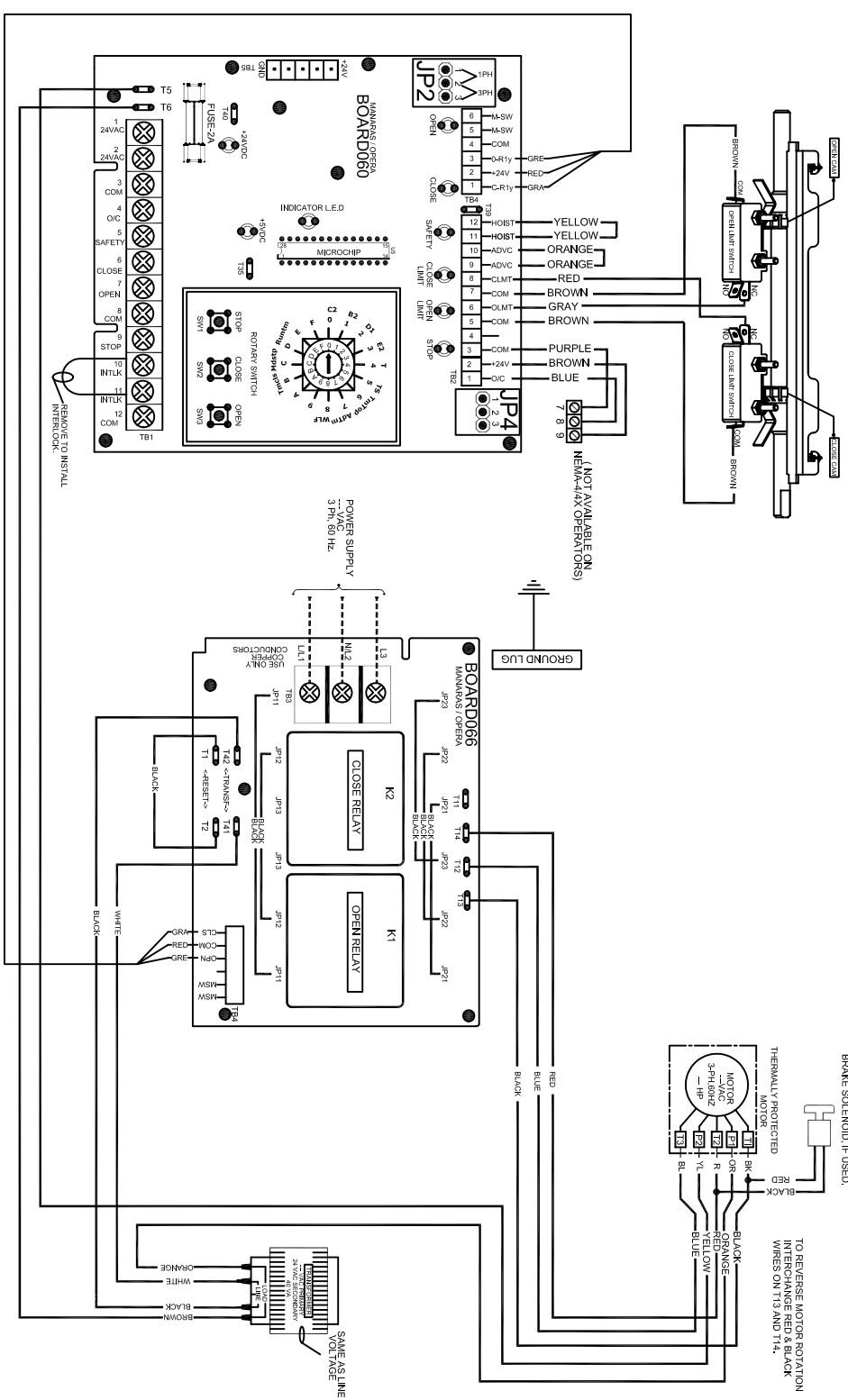


WIRING DIAGRAM FOR 3-PHASE OPERATOR- MODEL : MTH/MTBH



ROTARY SWITCH SETTINGS

WIRING TYPES	PROGRAM SETTINGS
0	6
1	7
2	8
3	B
4	C
5	D

ON BOARD JUMPER SETTINGS

JP2	JP4
2, 3	1, 2
2, 3	2, 3

WARNING LIGHT/RECEIVER MODULE

TB5 CONNECTION FOR WARNING LIGHT AND RECEIVER MODULE. (CONSULT FACTORY)

NOTE:-
FOR ROTARY SWITCH SETTINGS AND PROGRAMMING PROCEDURES, REFER TO INSTRUCTION MANUAL.

EXTERNAL WIRING

LINE POWER	24 VAC POWER	EXTERNAL INTERLOCK	SAFETY REVERSE	OPENING, CLOSE COMMAND	SINGLE PUSH-BUTTON STATION	TWO PUSH-BUTTON STATION	RADIO RECEIVER
L/L1 N/L2 L3	1 2	10 11	3 5	3 4	9 8 7 6	7 8 9	7 8 9
POWER SUPPLY 3 Ph, 60 Hz.	24 VAC POWER AVAILABLE (20VA MAX)	FACTORY INSTALLED JUMPER REMOVE IF USED.	CONTACT FOR SAFETY REVERSE DEVICE	CONTACT FOR OPEN/CLOSE DEVICE	NOTE: PLACE A JUMPER BETWEEN TERMINALS 8 AND 9, IF STOP BUTTONS NOT USED.	P.B.S.#1 P.B.S.#2	RADIO CONTROL TERMINAL STRIP

ATTENTION- USE 18AWG OR HIGHER FOR WIRING ALL EXTERNAL CONNECTIONS

THE INFORMATION CONTAINED HEREIN IS PROPRIETARY TO MANNARAS/OPERA. NO PART OF THIS DOCUMENT IS TO BE REPRODUCED OR TRANSMITTED IN ANY FORM OR BY ANY MEANS, ELECTRONIC OR MECHANICAL, INCLUDING PHOTOCOPYING, RECORDING, OR BY ANY INFORMATION STORAGE AND RETRIEVAL SYSTEM.

WIRING DIAGRAM, 20814801575/VAC, 3- PHASE

TITLE: MANNARAS/OPERA 9140-Q0720 QUEBEC INC.
 136 ONIDA DRIVE
 POINTE-CLAIRE, QC H9R 1A8
 TEL- 1-800-361-2260
 FAX: 1-888-628-0606

DATE: 15.NOV.2006
 DRAWN BY: B6C/MTH3-341
 REV: 02/07
 A. 15.JAN.2007