

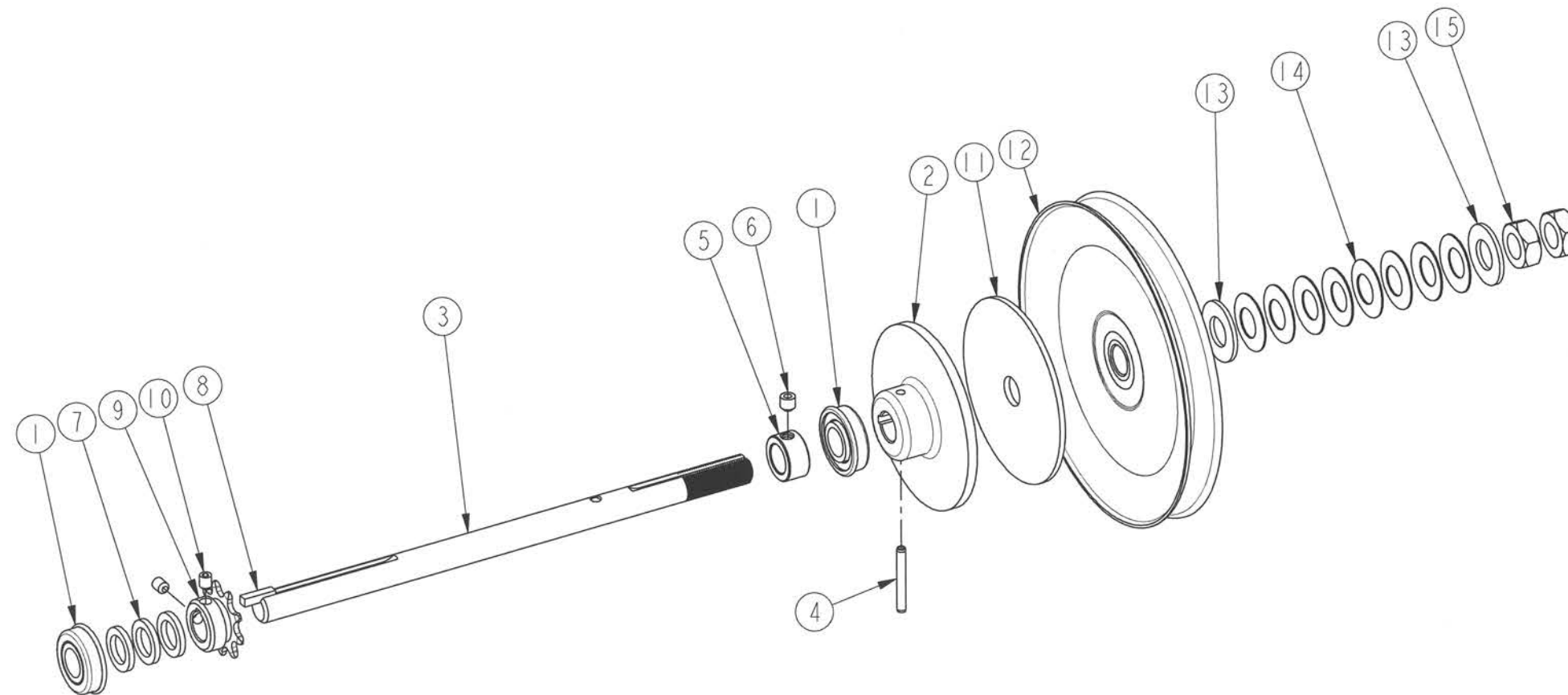
No	Qty	DESCRIPTION	# MANARAS	REV
1	2	6-32 X 5/8 TYPE F S-TAP. SCREW	SCREW095	
2	1	10-24 X 3/4 TYPE F S-TAP. SCREW	SCREW023	
3	4	10-32 HEX SERRATED FLANG NUT ZP	NUT062	
4	2	#410-1R32P(INCL. IC/L)	CHAIN006	
5	4	1/4-20 X 5/16 SET SCREW	SCREW001	
6	2	410B12 X 1 K1/4 2S5/16-18 PH1/4 CR	SPR410B12X1	1
7	1	410B18 X 1 K1/4 2S5/16-18	SPR410B18X1	1
8	1	410B9 X 3/8 K0 2S1/4-20	SPR410B9X3/8	
9	1	410B9 X 5/8 K3/16 2S1/4-20 CR	SPR410B9X5/8	1
10	4	5/16-18 HEX SERRATED FLANG NUT ZP	NUT055	
11	4	5/16-18 X 3/4 RND HD SO NECK BOLT	BOLT093	
12	8	5/16-18 X 5/16 SET SCREW	SCREW003	
13	2	5/8-18 HEX JAM NUT ZP	NUT013	
14	8	BELLEVILLE WASHER (31.5X16.3X0.8)	WASHER035	
15	1	CL.PAD 5/8x4x0.125"	CLUTCHPAD005	3
16	1	CLUTCHPLATE 5/8	CLUTCHPLATE004	3
17	1	COLLAR 1"	COLLAR007	
18	1	COLLAR 5/8"	COLLAR004	
19	2	EXT. SELF-LOCKING RET. RING 3/8" CURVED RIM	CLIP021	
20	2	FLANGE BEARING 1" C16-3F*5	BEARING007	
21	2	FLANGE BEARING 5/8 c10-22f*3	BEARING005	
22	1	FLT WASHER 3/8 (.391X.750X.130) ZP	WASHER064	0
23	3	FLT WASHER 5/8 (.630X.955X.120) ZP	WASHER019	0
24	1	KEY 1/4 X 1	KW021	5
25	1	KEY 3/16 X 3/4	KW010	5
26	2	LIMIT SHAFT BUSING LOCK WASHER	WASHER066	2
27	1	MEDIUM TROLLEY INPUT SHAFT	SHAFT086	4
28	1	MOTOR 1/2HP 115V/1PH 60HZ OPD 48Y	MOTOR189	
29	1	MOTOR PULLEY 1 1/2 X 1/2 4L	PULLEY011	
30	1	OMT LEFT SIDE FRAME	FRAME035	13
31	1	OMT RIGHT SIDE FRAME	FRAME036	9
32	2	OMT SPACER	SPACER026	1
33	1	OPERA CONTROL BOX COVER	COVER047	9
34	2	OPERA LIMIT SHAFT BUSHING	BUSHING055	1
35	1	PIN SLOTTED SPRING 1/4 x 1.5	PIN010	
36	1	PIN SLOTTED SPRING 3/16 x 1.5	PIN007	
37	1	PULLEY 7" x 5/8" 5L/B	PULLEY020	5
38	1	PUSH NUT #10	CLIP015	
39	1	TROLLEY OUTPUT SHAFT	SHAFT048	6
40	2	TYPE A PLAIN WASHER 5/8 N ZP	WASHER014	0
41	1	TYPE A, INSIDE LENGHT 24"	VBELTA24	

PART DESCRIPTION		
<b>OMT 120V-1PH-1/2HP</b>		
PART NUMBER	OMT	MANARAS-OPERA 136 ONEIDA DRIVE POINTE-CLAIRE, QC, H9R 1A8 TEL: 1-800-361-2280 FAX: 1-888-628-0606
DRAWN BY:	J. PROULX	
DATE:	2013-01-09	
UPDATED BY:	J. PROULX	
DATE:	2014-10-01	SHEET: 1 of 1

**CONFIDENTIAL:** THIS DRAWING AND/OR THE INFORMATION CONTAINED HEREIN IS AND REMAINS THE SOLE PROPERTY OF, AND IS PROPRIETARY TO, MANARAS-OPERA. THIS DRAWING AND/OR INFORMATION SHALL BE KEPT CONFIDENTIAL AND MAY NOT BE REPRODUCED, COPIED, MODIFIED, DISCLOSED, TRANSFERRED, OR MADE AVAILABLE TO OTHERS, EXCEPT WITH THE EXPRESS CONSENT OF MANARAS-OPERA. IT IS LOANED IN CONFIDENCE FOR MUTUAL ASSISTANCE PURPOSES ONLY. MANARAS-OPERA MAY AT ANY TIME, WRITTEN MODIFY THE DRAWING AND/OR INFORMATION CONTAINED HEREIN.

No	Qty	DESCRIPTION	# MANARAS	REV
1	2	FLANGE BEARING 5/8 c10-22f*3	BEARING005	
2	1	CLUTCHPLATE 5/8	CLUTCHPLATE004	3
3	1	MEDIUM TROLLEY INPUT SHAFT	SHAFT086	4
4	1	PIN SLOTTED SPRING 3/16 x 1.5	PIN007	
5	1	COLLAR 5/8"	COLLAR004	
6	1	5/16-18 X 5/16 SET SCREW	SCREW003	
7	3	FLT WASHER 5/8 (.630X.955X.120) ZP	WASHER019	0
8	1	KEY 3/16 X 3/4	KW010	5
9	1	410B9 X 5/8 K3/16 2S1/4-20 CR	SPR410B9X5/8	1
10	2	1/4-20 X 5/16 SET SCREW	SCREW001	
11	1	CL. PAD 5/8x4x0.125"	CLUTCHPAD005	3
12	1	PULLEY 7" x 5/8" 5L/B	PULLEY020	5
13	2	TYPE A PLAIN WASHER 5/8 N ZP	WASHER014	0
14	8	BELLEVILLE WASHER (31.5X16.3X0.8)	WASHER035	
15	2	5/8-18 HEX JAM NUT ZP	NUT013	

NOT SHOWN IN DRAWING		
Qty	DESCRIPTION	# MANARAS
1	TYPE A, INSIDE LENGTH 24"	VBELTA24

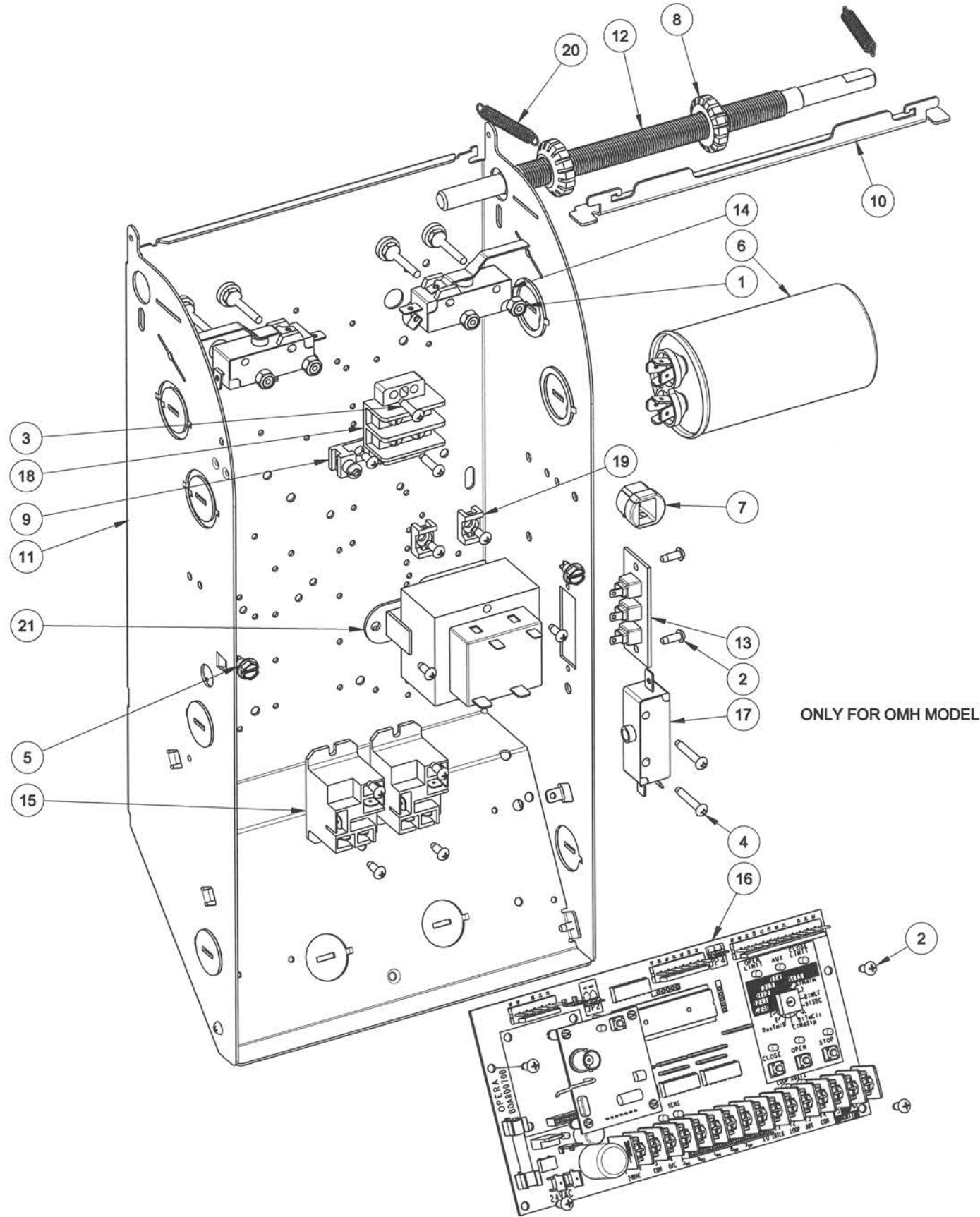


PART DESCRIPTION		
<b>OMT CLUTCH SHAFT KIT</b>		
PART NUMBER	MANARAS-OPERA	
MOUNTSHAFT021 (DRAWING027)	136 ONEIDA DRIVE	
DRAWN BY: J. PROULX	POINTE-CLAIRE, QC, H9R 1A8	
DATE: 2013-01-09	TEL: 1-800-361-2280	
UPDATED BY: —	FAX: 1-888-628-0606	
DATE: —		
		SHEET: 2 of 3

**CONFIDENTIAL:**

THIS DRAWING AND/OR THE INFORMATION CONTAINED HEREIN IS AND REMAINS THE SOLE PROPERTY OF, AND IS PROPRIETARY TO, MANARAS-OPERA. THIS DRAWING AND/OR INFORMATION SHALL BE KEPT CONFIDENTIAL AND MAY NOT BE REPRODUCED, COPIED, MODIFIED, DISCLOSED, TRANSFERRED, OR MADE AVAILABLE TO OTHERS, EXCEPT WITH THE EXPRESS CONSENT OF MANARAS-OPERA. IT IS LOANED IN CONFIDENCE FOR MUTUAL ASSISTANCE PURPOSES ONLY. MANARAS-OPERA MAY AT ANY TIME, WRITTEN MODIFY THE DRAWING AND/OR INFORMATION CONTAINED HEREIN.

HARNESS		
Qty	DESCRIPTION	# MANARAS
1	CONTROL HARNESS	HARNESS098



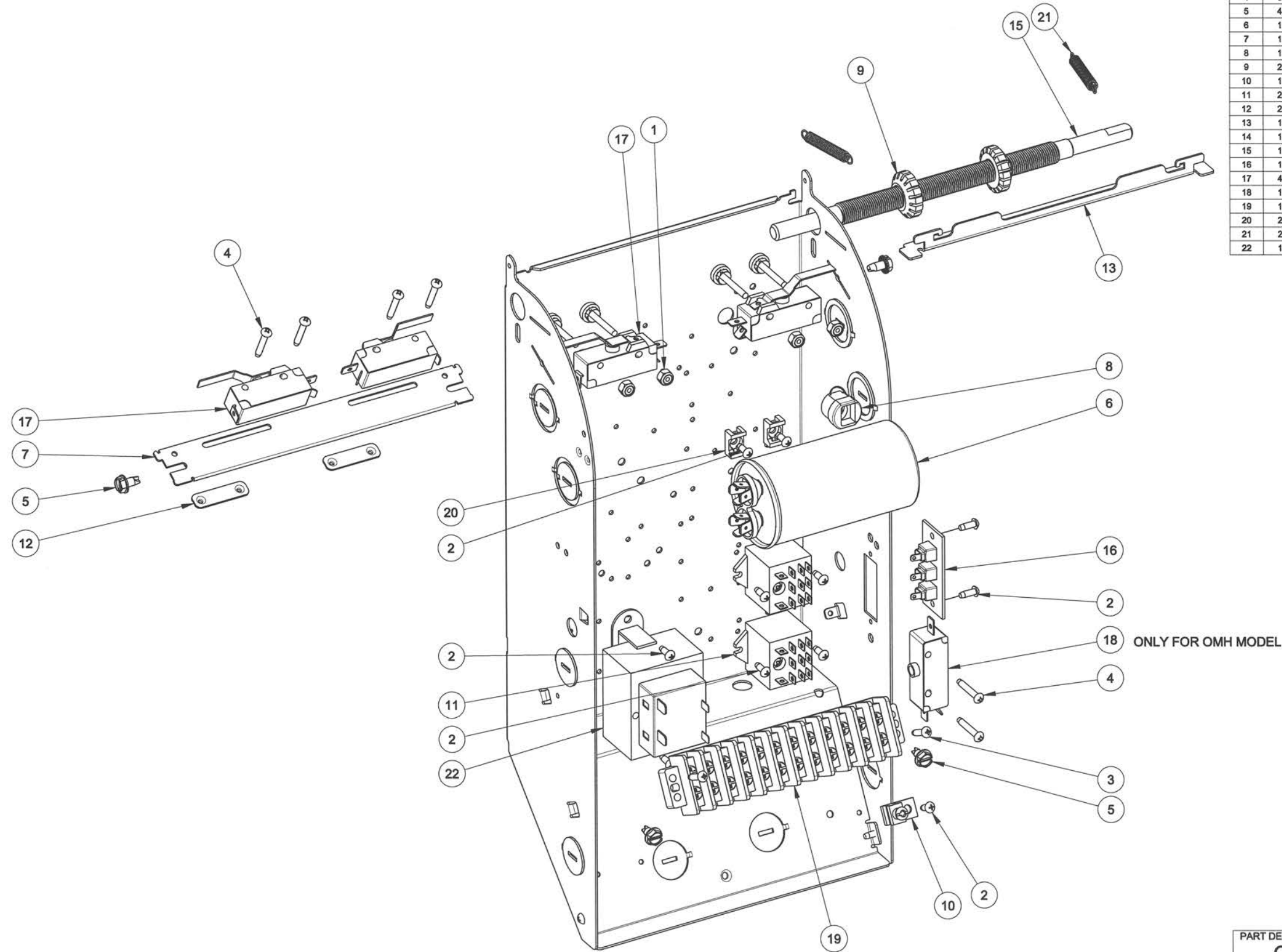
No	Qty	DESCRIPTION	# MANARAS	REV
1	4	6-32 HEX NYLON LOCK NUT ZP	NUT018	
2	15	6-32 X 3/8 TYPE T S-TAP. SCREW	SCREW094	
3	2	6-32 X 5/8 TYPE F S-TAP. SCREW	SCREW095	
4	2	6-32 X 7/8 TYPE F S-TAP. SCREW	SCREW096	
5	2	10-24 X 3/8 TYPE T S-TAP. SCREW	SCREW022	
6	1	70 MF 250VAC/BS060HZ	CAPACITOR024	
7	1	CABLE STRAIN RELIEF 5/8 OD	BUSHING058	
8	2	CAM LIMIT OPERA	CAM011	2
9	1	GROUND LUG TA61G-UL	CONNECTOR039	
10	1	OPERA CBOX CAMPLATE	CAMPLATE019	5
11	1	OPERA CONTROL BOX	CBOX04x	
12	1	OPERA LIMIT SHAFT	SHAFT103	6
13	1	RADIO CONTROL TERM STRIP	TSTRIP005	
14	2	SINGLE LIMIT SWITCH - LEVER 46 DEG	LIMIT023	4
15	2	SPST-NO 30A 24VDC FLANGE MOUNT.	RELAY068	
16	1	STD ELECT. CONTR. BOARD	BOARD070	
17	1	STD SINGLE CUT-OFF SWITCH	LIMIT020	
18	1	TERMINAL STRIP 2 POSITIONS	TSTRIP009	
19	2	TIE-WRAP ANCHOR	SUPPORT003	
20	2	TOGGLE SWITCH SPRING	SPRING030	
21	1	TRANSFO TO 24V	SEE TABLE	--

PART DESCRIPTION		
<b>OPERA MD CBOX ECB</b>		
PART NUMBER	MANARAS-OPERA	
<b>OPERA-BOARD070</b>	136 ONEIDA DRIVE	
DRAWN BY: J. PROULX	PONTE-CLAIRE, QC, H9R 1A8	
DATE: 2010-09-29	TEL: 1-800-361-2280	
UPDATED BY: J. PROULX	FAX: 1-888-626-0606	
DATE: 2014-10-01		
		SHEET: 1 of 1

**CONFIDENTIAL:** THIS DRAWING AND/OR THE INFORMATION CONTAINED HEREIN IS AND REMAINS THE SOLE PROPERTY OF, AND IS PROPRIETARY TO, MANARAS-OPERA. THIS DRAWING AND/OR INFORMATION SHALL BE KEPT CONFIDENTIAL AND MAY NOT BE REPRODUCED, COPIED, MODIFIED, DISCLOSED, TRANSFERRED, OR MADE AVAILABLE TO OTHERS, EXCEPT WITH THE EXPRESS CONSENT OF MANARAS-OPERA. IT IS LOANED IN CONFIDENCE FOR MUTUAL ASSISTANCE PURPOSES ONLY. MANARAS-OPERA MAY AT ANY TIME, WRITTEN MODIFY THE DRAWING AND/OR INFORMATION CONTAINED HEREIN.

HARNESS		
Qty	DESCRIPTION	# MANARAS
1	CONTROL HARNESS	HARNESS038

No	Qty	DESCRIPTION	# MANARAS	REV
1	4	6-32 HEX NYLON LOCK NUT ZP	NUT018	
2	11	6-32 X 3/8 TYPE T S-TAP. SCREW	SCREW094	
3	2	6-32 X 5/8 TYPE F S-TAP. SCREW	SCREW095	
4	6	6-32 X 7/8 TYPE F S-TAP. SCREW	SCREW096	
5	4	10-24 X 3/8 TYPE T S-TAP. SCREW	SCREW022	
6	1	70 MF 250VAC/B50/60HZ	CAPACITOR024	
7	1	ADV LS BRACKET	BRACKET245	4
8	1	CABLE STRAIN RELIEF 5/8 OD	BUSHING058	
9	2	CAM LIMIT OPERA	CAM011	2
10	1	GROUND LUG TA61G-JL	CONNECTOR039	
11	2	IDEL 24 VAC RELAY TRIPLE POLE	RELAY039	
12	2	LS MOUNTING BRKT	BRACKET246	2
13	1	OPERA CBOX CAMPLATE	CAMPLATE019	5
14	1	OPERA CONTROL BOX	CBOX04x	
15	1	OPERA LIMIT SHAFT	SHAFT103	6
16	1	RADIO CONTROL TERM STRIP	TSTRIP005	
17	4	SINGLE LIMIT SWITCH - LEVER 46 DEG	LIMIT023	4
18	1	STD SINGLE CUT-OFF SWITCH	LIMIT020	
19	1	TERMINAL STRIP 12 POSITIONS	TSTRIP001	
20	2	TIE-WRAP ANCHOR	SUPPORT003	
21	2	TOGGLE SWITCH SPRING	SPRING030	
22	1	TRANSFO 120/240-24 40VA	TRANSF143	--



PART DESCRIPTION		
<b>OPERA MD CBOX HARDWARE w/HOIST</b>		
PART NUMBER	MANARAS-OPERA	136 ONEIDA DRIVE PONTE-CLAIRE, QC, H9R 1A8 TEL: 1-800-361-2260 FAX: 1-888-626-0606
OPERA-HW		
DRAWN BY: J. PROULX		
DATE: 2010-09-30		
UPDATED BY: J. PROULX		
DATE: 2014-10-01		

**CONFIDENTIAL:** THIS DRAWING AND/OR THE INFORMATION CONTAINED HEREIN IS AND REMAINS THE SOLE PROPERTY OF, AND IS PROPRIETARY TO, MANARAS-OPERA. THIS DRAWING AND/OR INFORMATION SHALL BE KEPT CONFIDENTIAL AND MAY NOT BE REPRODUCED, COPIED, MODIFIED, DISCLOSED, TRANSFERRED, OR MADE AVAILABLE TO OTHERS, EXCEPT WITH THE EXPRESS CONSENT OF MANARAS-OPERA. IT IS LOANED IN CONFIDENCE FOR MUTUAL ASSISTANCE PURPOSES ONLY. MANARAS-OPERA MAY AT ANY TIME, WRITTEN MODIFY THE DRAWING AND/OR INFORMATION CONTAINED HEREIN.