

No.	Qty	DESCRIPTION	# MANARAS	REV
1	4	6-32 HEX NUT ZP	NUT002	
2	4	6-32 HEX NYLON LOCK NUT ZP	NUT018	
3	4	6-32 X 2 MACHINE SCREW	SCREW045	
4	14	6-32 X 3/8 TYPE F S-TAP. SCREW	SCREW094	
5	6	6-32 X 5/8 TYPE F S-TAP. SCREW	SCREW095	
6	2	8-32 HEX NUT ZP	NUT003	
7	2	8-32 X 3/8 MACHINE SCREW	SCREW049	
8	6	10-24 X 3/8 TYPE F S-TAP. SCREW	SCREW022	
9	1	10-32 HEX NYLON LOCK NUT ZP	NUT019	
10	1	10-32 X 1/2 MACHINE SCREW	SCREW054	
11	1	#41-1R50P(INCL. IC/L)	CHAIN020	
12	1	#410-1R26P(INCL. IC/L)	CHAIN061	
13	1	#50 CONNECTING LINK 50-1	LINK011	
14	8	1/4-20 HEX NUT ZP	NUT006	
15	3	1/4-20 HEX NYLON LOCK NUT ZP	NUT020	
16	2	1/4-20 X 1-1/2 HEX BOLT	BOLT008	
17	5	1/4-20 X 1-1/4 RND HD SO NECK BOLT	BOLT083	
18	4	1/4-20 X 5/16 SET SCREW	SCREW001	
19	2	410B12-1 K1/4-255/16-PH1/4-CR	SPR410B12X1	1
20	1	410B12-5/8- K0-251/4	SPR410B12X5/8	
21	1	41B36-1 K1/4-255/16	SPR41B36X1	4
22	1	41B9-5/8 K3/16-251/4-20-CR	SPR41B9X5/8	4
23	4	5/16-18 HEX NUT ZP	NUT007	
24	4	5/16-18 X 3/4 RND HD SO NECK BOLT	BOLT093	
25	11	5/16-18 X 5/16 SET SCREW	SCREW003	
26	4	5/8-24 HEX JAM NUT ZP	NUT015	
27	1	ADJUSTMENT BRAKE LEVER	LEVER064	3
28	1	BRAKE DRUM 5/8 WITH GROOVE	DRUM004	8
29	1	BRAKE LEVER	LEVER065	6
30	1	BRAKE LEVER PIVOT	BUSHING053	3
31	1	BRAKE SHOE ASS FOR STD BRAKE	BRAKEPART017	
32	2	CAM GUIDE PLATE SPRING C260047	SPRING001	
33	1	CL. PAD 5/8x4x0.125"	CLUTCHPAD005	3
34	1	CLUTCH SPRING 5/8	SPRING009	
35	1	CLUTCHPLATE 5/8 (0.625) SPECIAL	CLUTCHPLATE004	3
36	2	COLLAR 1"	COLLAR007	
37	2	COLLAR 5/8"	COLLAR004	
38	1	DPDT 120V RELAY	RELAY026	
39	1	DPDT 24V RELAY	RELAY024	
40	2	FLANGE BEARING 1" C16-3F*5	BEARING007	
41	2	FLANGE BEARING 5/8 C10-22F*3	BEARING005	
42	2	FLANGED BEARING 5/8	BEARING006	
43	1	GROUND LUG TA61G-UL	CONNECTOR039	
44	4	HELICAL SPRING LOCK WASH NO 10 ZP	WASHER025	
45	4	HELICAL SPRING LOCK WASHER 1/4 ZP	WASHER026	
46	4	HELICAL SPRING LOCK WASHER 5/16 ZP	WASHER028	
47	4	HELICAL SPRING LOCK WASHER NO 6 ZP	WASHER023	
48	2	HELICAL SPRING LOCK WASHER NO 8 ZP	WASHER024	
49	1	KEY 1/4 X 1	KW021	5
50	1	KEY 3/16 X 1-3/4 ROUNDED ENDS	KW009	5
51	1	KEY 3/16 X 3/4	KW002	5
52	2	LIMIT CAM 5/8-24UNEF	CAM004	
53	1	LIMIT SWITCH LEVER	LEVER066	11
54	1	MDJ, MGT, MSJ, MTH, MTBH DRIVE	SHAFT048	5
55	1	MOTOR	MOTOR	
56	1	MOTOR PULLEY 2.0 x 5/8 5L STL	PULLEY014	1
57	1	MTBH INPUT SHAFT 5/8-24X14-3/4	SHAFT080	
58	1	MTH - MTBH FRAME	FRAME014	9
59	1	MTH/MTBH CAMPLATE N-1	CAMPLATE012	4
60	1	PIN COTTER 1/8 X 1-1/2	PIN001	
61	1	PIN SLOTTED SPRING 1/4 X 1.5	PIN010	
62	1	PIN SLOTTED SPRING 3/16 X 1.5	PIN007	
63	1	PLATED BRAKE PLATE	PLATE084	9
64	1	PLATED SOLENOID COVER	COVER048	5
65	1	PULLEY 7" x 5/8" 5L/B	PULLEY020	5
66	1	RADIO CONTROL TERM STRIP	STRIP005	
67	1	RESET	RESET	
68	1	SHAFT 24UNEF LG. 10.085"	SHAFT105	2
69	1	SOLENOID	SOLENOID001	
70	1	STANDARD CONTROL BOX	CBOX009	19

71	1	STANDARD CONTROL BOX COVER	COVER009	3
72	1	STD CBOX TERMINAL BRACKET	BRACKET037	7
73	4	STD SINGLE LIMIT SWITCH	LIMIT015	
74	1	TELEM. REVERS. CONT. 24V	CONTACTOR044	
75	1	TERMINAL STRIP 12 POSITIONS	TSTRIP001	
76	1	TRANSFO 120/240-24 40VA	TRANSF143	
77	1	TROLLEY ARM DISCONN. SPRING	SPRING026	
78	1	TYPE A PLAIN WASHER 1/4 N ZP	WASHER004	
79	1	TYPE A PLAIN WASHER 3/16 ZP	WASHER003	
80	2	TYPE A PLAIN WASHER 5/8 N ZP	WASHER014	
81	1	TYPE A PLAIN WASHER NO 10 ZP	WASHER046	
82	1	TYPE B, OUTSIDE LENGTH 35	VBELTSL350	
83	4	WASHER 1/4 10.250X0.875X0.250	WASHER052	
84	1	WASHER 5/32 EPDM 15/32X7/8X1/32	WASHER069	

PART DESCRIPTION

MTBH

PART NUMBER: MTBH

MANARAS-OPERA
136 ONEIDA DRIVE
POINTE-CLAIRE, QC, H9R 1A8
TEL: 1-800-361-2260
FAX: 1-888-626-0606

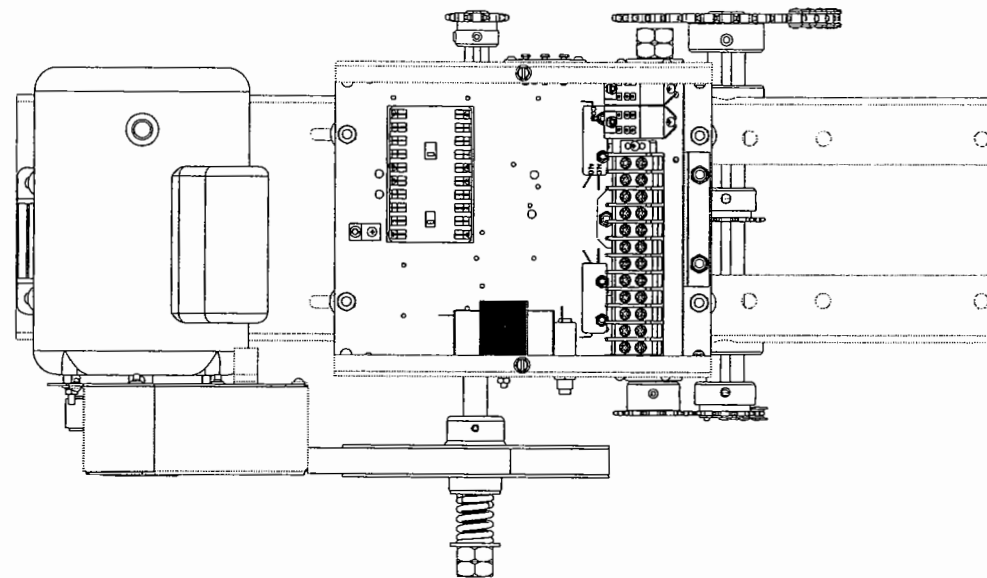
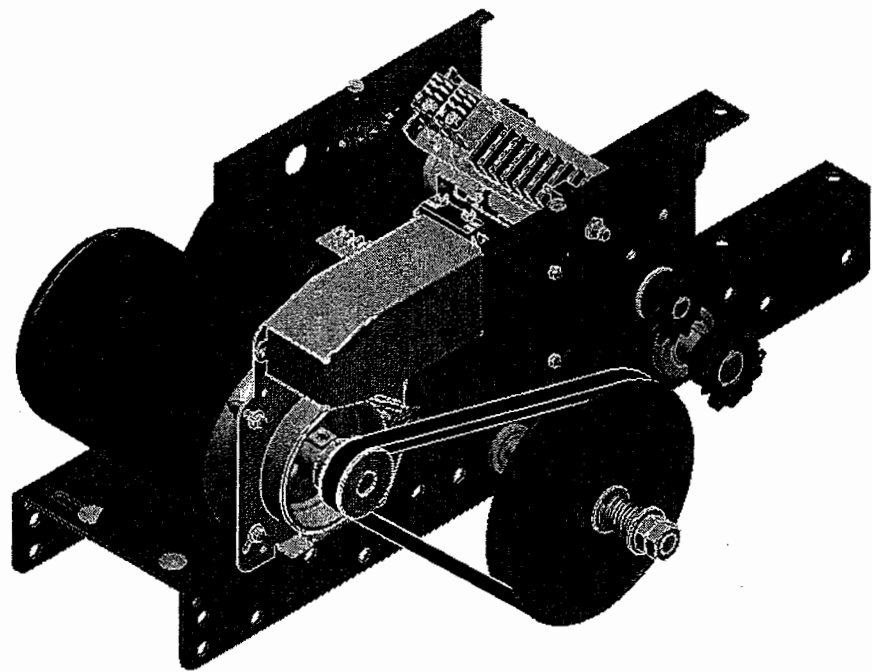
LAST UPDATE: 01.08.2007

MANARAS
Opera

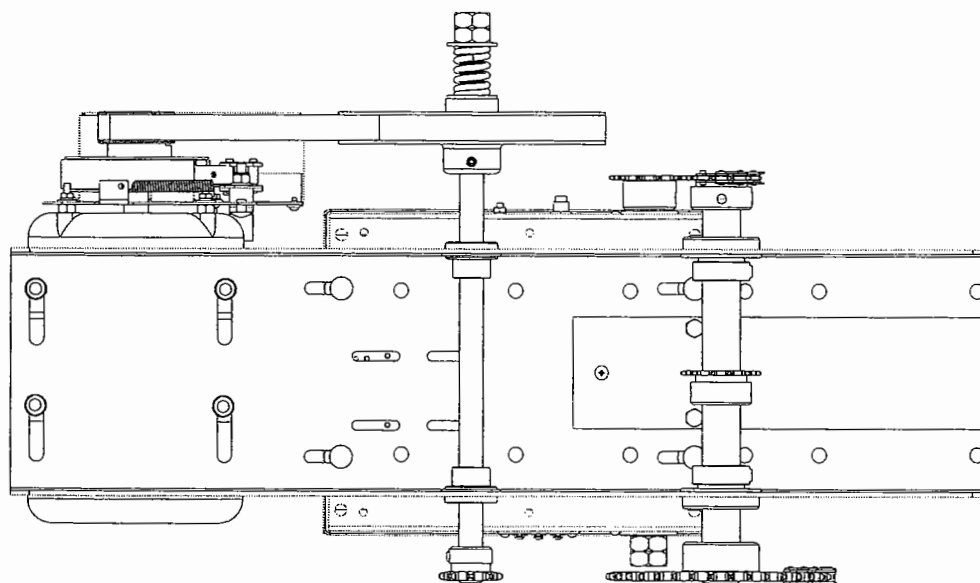
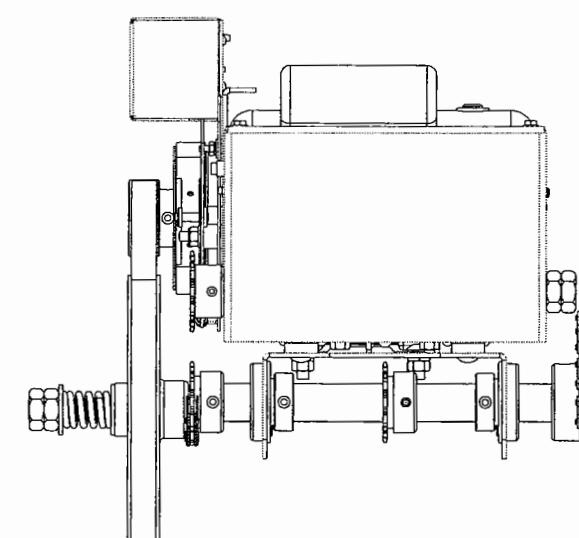
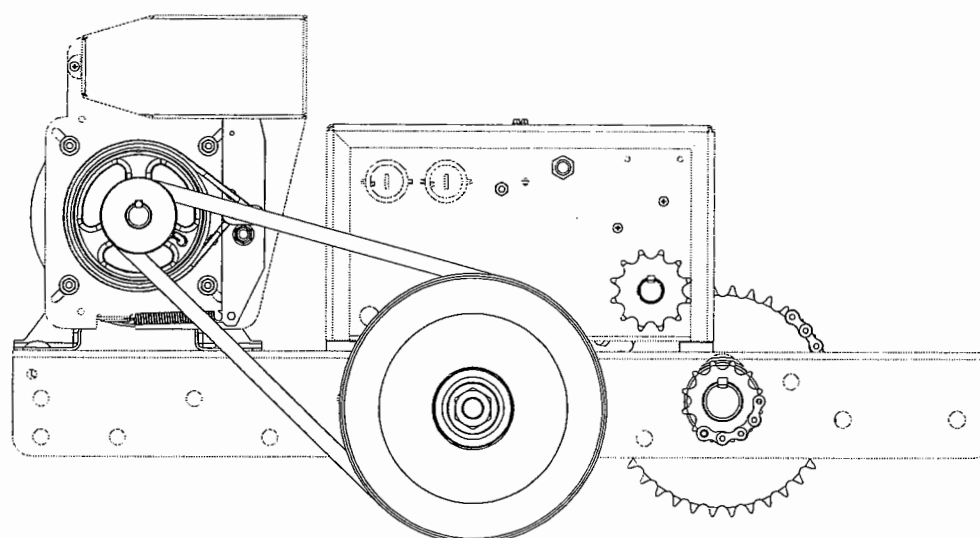
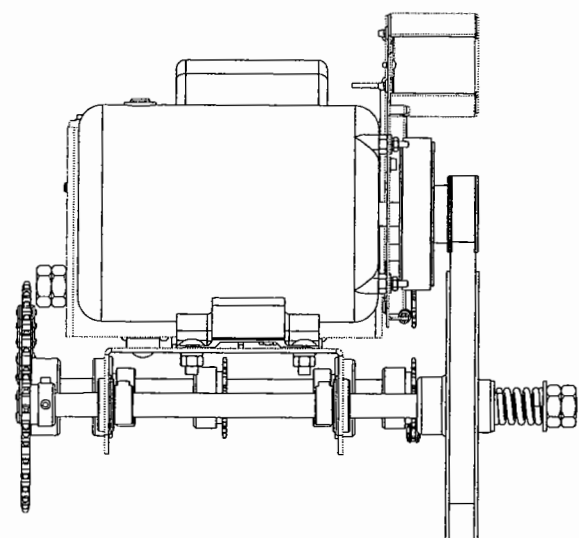
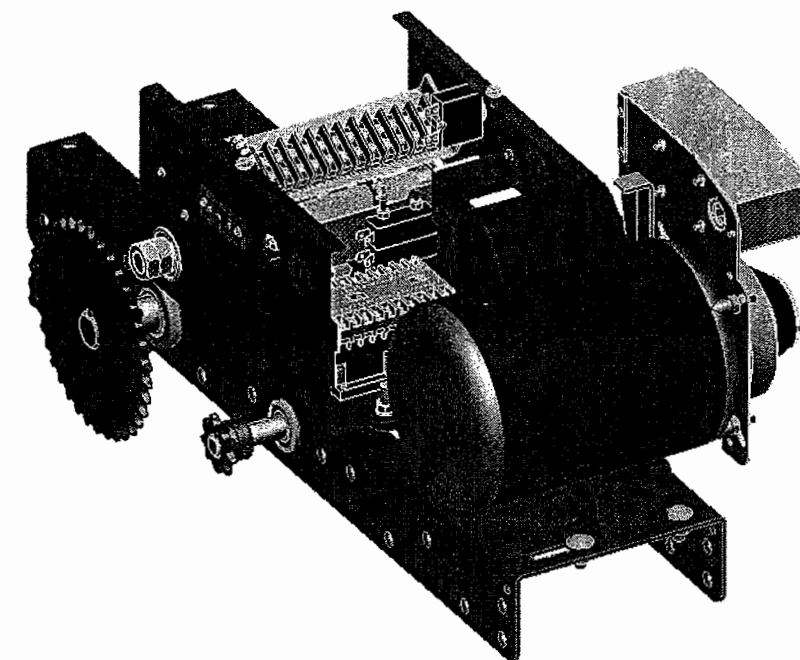
DRAWN BY: N. BELANGER

SHEET 1 of 2

CONFIDENTIAL: THIS DRAWING AND/OR THE INFORMATION CONTAINED HEREIN IS AND REMAINS THE SOLE PROPERTY OF, AND IS PROPRIETARY TO, MANARAS-OPERA. THIS DRAWING AND/OR INFORMATION SHALL BE KEPT CONFIDENTIAL AND MAY NOT BE REPRODUCED, COPIED, MODIFIED, DISCLOSED, TRANSFERRED, OR MADE AVAILABLE TO OTHERS, EXCEPT WITH THE EXPRESS CONSENT OF MANARAS-OPERA. IT IS LOANED IN CONFIDENCE FOR MUTUAL ASSISTANCE PURPOSES ONLY. MANARAS-OPERA, MAY AT ANY TIME, WRITTEN MODIFY THE DRAWING AND/OR INFORMATION CONTAINED HEREIN.



TOP AND ISO VIEWS ARE SHOWN WITHOUT COVER009



PART DESCRIPTION		MTBH	
PART NUMBER	MTBH	MANARAS-OPERA 136 ONEIDA DRIVE POINTE-CLAIRE, OC. H9R 1A8 TEL: 1-800-361-2260 FAX: 1-888-626-0606	
DRAWN DATE:	2008-09-15	INITIAL	
LAST UPDATE:			

Manaras
Opera

DRAWN BY: G. THOMAS
SHEET: 2 of 2

CONFIDENTIAL: THIS DRAWING AND/OR THE INFORMATION CONTAINED HEREIN IS AND REMAINS THE SOLE PROPERTY OF, AND IS PROPRIETARY TO, MANARAS-OPERA. THIS DRAWING AND/OR INFORMATION SHALL BE KEPT CONFIDENTIAL AND MAY NOT BE REPRODUCED, COPIED, MODIFIED, DISCLOSED, TRANSFERRED, OR MADE AVAILABLE TO OTHERS, EXCEPT WITH THE EXPRESS CONSENT OF MANARAS-OPERA. IT IS LOANED IN CONFIDENCE FOR MUTUAL ASSISTANCE PURPOSES ONLY. MANARAS-OPERA MAY AT ANY TIME, WRITTEN MODIFY THE DRAWING AND/OR INFORMATION CONTAINED HEREIN.