

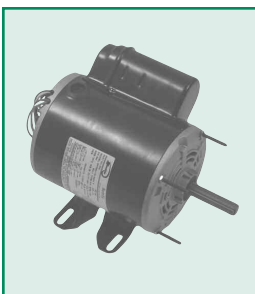
Electric Motors

Instant reverse, intermittent duty, ODP, 1 phase, 60hz motors with internal thermal overload for medium duty operators.



- **MOTOR189** 1/2HP 110V, 1050 rpm. Applies to MLJ, MLH, MLT.
- **MOTOR260** 1/2HP 110V / 1500 rpm, for Opera-MJ/MH.
- **CAPACITOR024** 70µF, 240 VAC, 50/60hz capacitor. Applies to all intermittent-duty motors.

Continuous Duty, Base Mount, ODP 60hz motors, 1750 rpm. They apply to Opera-J, Opera-H, MSJ, MTH, MTBH, MSLD operators.



- **MOTOR253** 1/3HP 115/230V 1 Phase
- **MOTOR254** 1/2HP 115/230V 1 Phase
- **MOTOR255** 3/4HP 115/230V 1 Phase
- **MOTOR256** 1HP 115/230V 1 Phase
- **MOTOR271** 1/2HP 230/460V 3 Phase
- **MOTOR273** 3/4HP 230/460V 3 Phase
- **MOTOR275** 1HP 230/460V 3 Phase
- **MOTOR272** 1/2HP 575V 3 Phase
- **MOTOR274** 3/4HP 575V 3 Phase
- **MOTOR276** 1HP 575V 3 Phase

Continuous duty motor spare parts.

- **RESISTOR004** Capacitor resistor for 1/2 and 3/4 HP motors.
- **CAPACITOR015** 340-408 µF capacitor for 1/2 HP 115 and 230V 1 Phase operators.
- **CAPACITOR008** 540-648 µF capacitor for 3/4 HP 115 and 230V 1 Phase operators.

Class II 24VAC Transformers



Tansfo 001



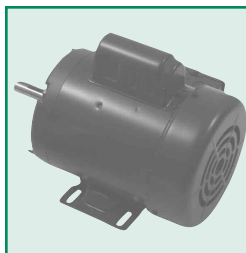
Tansfo 005 - 037 - 088 - 142



Tansfo 006

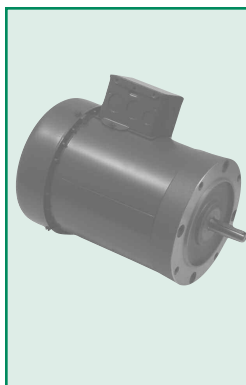
- **TRANSF001** 120/24V, 30VA
- **TRANSF005** 120/24V, 40VA
- **TRANSF037** 240/208/24V, 40VA
- **TRANSF088** 480/24V, 40VA
- **TRANSF142** 575/24V, 40VA
- **TRANSF006** 120/24V, 50VA
- **TRANSF003** 120/24V, 100VA
- **TRANSF017** 208/24V, 100VA
- **TRANSF050** 220/24V, 100VA
- **TRANSF087** 480/24V, 100VA
- **TRANSF107** 575/24V, 100VA

Continuous Duty, Base Mount, TEFC, 60hz motors, 1750 rpm. They apply to MSJ, MTH, MTBH, MJ, MJH, MSLD operators. They are used in Nema 4/12 installations.



- **MOTOR257** 1/2HP 115/230V 1 Phase
- **MOTOR258** 3/4HP 115/230V 1 Phase
- **MOTOR259** 1HP 115/230V 1 Phase
- **MOTOR277** 1/2HP 230/460V 3 Phase
- **MOTOR279** 3/4HP 230/460V 3 Phase
- **MOTOR281** 1HP 230/460V 3 Phase
- **MOTOR278** 1/2HP 575V 3 Phase
- **MOTOR280** 3/4HP 575V 3 Phase
- **MOTOR282** 1HP 575V 3 Phase

Continuous Duty C-Flange TEFC, 60hz motors, 1750 rpm. They apply to Gear Head operators: GH, MGH, MGT, MGS LD.



- **MOTOR316** 1/2HP 115/230V 1 Phase
- **MOTOR317** 3/4HP 115/230V 1 Phase
- **MOTOR318** 1HP 115/230V 1 Phase
- **MOTOR319** 1.5HP 115/230V 1 Phase
- **MOTOR261** 1/2HP 230/460V 3 Phase
- **MOTOR262** 3/4HP 230/460V 3 Phase
- **MOTOR264** 1HP 230/460V 3 Phase
- **MOTOR266** 1.5HP 230/460V 3 Phase
- **MOTOR268** 2HP 230/460V 3 Phase
- **MOTOR263** 3/4HP 575V 3 Phase
- **MOTOR265** 1HP 575V 3 Phase
- **MOTOR267** 1.5HP 575V 3 Phase
- **MOTOR270** 2HP 575V 3 Phase

Limit Switches

Single limit switches, SPDT, used to stop the door at top and bottom or as disconnect switch.



Limit 015



Limit 016

- **LIMIT001** Single limit switch with lever. Applies to old Heavy-duty operator models. It is also used as disconnect switch for GH and MGH models.
- **LIMIT015** Single limit switch without lever. Applies to all current operators. It is also used as disconnect switch for Opera models.
- **LIMIT006** Single limit switch with lever. Applies to old Medium-duty operator models.
- **LIMIT016** Single limit switch used as disconnect switch on MLH

Double limit switches, DPDT. The extra contact is used to control auxiliary equipments.



Limit 018

- **LIMIT003** Double limit switch with lever. Applies to old operator models.
- **LIMIT018** Double limit switch without lever. Applies to all current operators.

Note: Some of these items are not stocked in all our distribution centers, please call us to confirm availability.

Toll free number: 800 - 361 - 2260

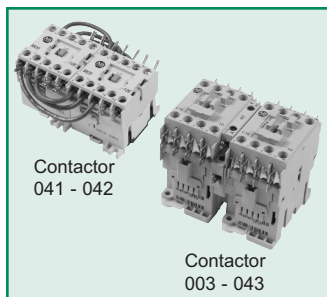
Reversing Relays



- **RELAY024** 24V Relay, DP DT, used in all heavy-duty operators as well as MLT and Opera-MH/MJ.
- **RELAY026** 120V Relay, DP DT, used in all 115V heavy-duty operators.
- **RELAY027** 240V Relay, DP DT, used in all 240V heavy-duty operators.
- **RELAY039** 24V Relay, 3 pole, used in MLT and Opera-MH/MJ.
- **RELAY043** 24V Relay, 4 pole, used in MLH, MLJ operators.

Reversing Contactors

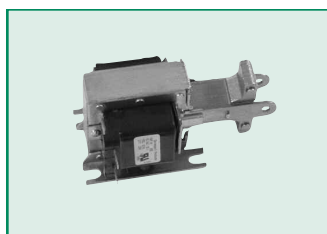
Reversing contactors are used on all Manaras heavy-duty operators.



- **CONTACTOR041** Linear contactor for 1 phase operators.
- **CONTACTOR042** Linear contactor for 3 phase operators.
- **CONTACTOR003** MMTc reversing contactors.
- **CONTACTOR043** Allen Bradley reversing contactor.

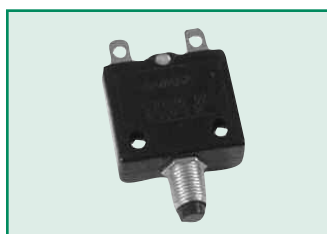
Solenoids

Used on all operators with solenoid brake.



- **SOLENOID001** 120V solenoid switch, for 120V operators.
- **SOLENOID002** 240V solenoid switch, for 230V operators.
- **SOLENOID003** 440V solenoid switch, for 460V operators.
- **SOLENOID004** 575V solenoid switch, for 575V operators.

1 Phase Overloads



- **RESET001** Reset 4 A
- **RESET002** Reset 5 A
- **RESET005** Reset 8 A
- **RESET007** Reset 10 A
- **RESET012** Reset 15 A
- **RESET013** Reset 16 A
- **RESET014** Reset 17 A

Miscellaneous

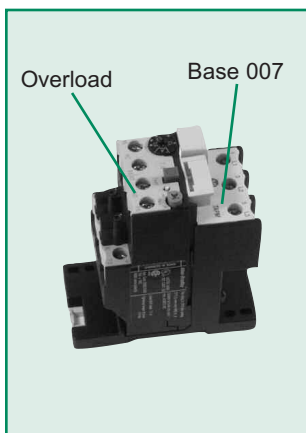


- **FUSE006** 2 A fuse.

Note: Some of these items are not stocked in all our distribution centers, please call us to confirm availability.

Manaras reserves the right to make specification or design changes without prior notice.

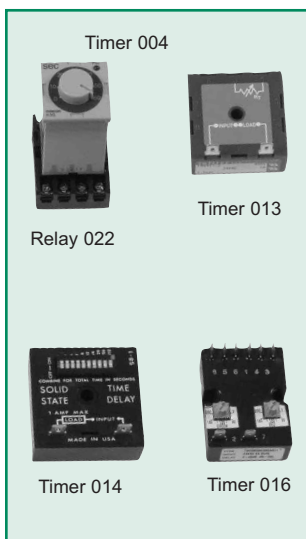
3 Phase Overloads



- **OVERLOAD034** 3 Phase 0.6 to 1 A
- **OVERLOAD035** 3 Phase 1 to 1.6 A
- **OVERLOAD036** 3 Phase 1.6 to 2.4 A
- **OVERLOAD037** 3 phase 2.4 to 4 A
- **OVERLOAD038** 3 phase 4 to 6 A
- **OVERLOAD039** 3 phase 6 to 10 A
- **OVERLOAD040** 3 phase 10 to 16 A
- **BASE007** Overload base.

Note: new 3 phase operators have motors with integrated overloads. They don't require external overloads.

Timers



- **TIMER004** Single timer, with SPDT contact, adjustable from 0 to 60s operates on 24V. Used in the timer to close option.
- **RELAY022** 8 Pin socket base for TIMER004.
- **TIMER013** In line 1.5s time delay. Operates on 24V. Used in delay on reverse option.
- **TIMER014** In line timer, adjustable from 1 to 1023s. Operates on 24V.
- **TIMER016** Dual timer, 2 independent SPDT contact, adjustable from 0 to 230s, operates on 24V. Used in warning light option.

Auxiliary Contacts

Additional contact blocks with one normally open and one normally closed contact. For the control of auxiliary features.



- **AUXCON039** Auxiliary contact: Applies to GH, MGH, MGT, MGSLD.
- **AUXCON042** Auxiliary contact: Applies to operators with linear contactors.

Cycle Counter

Non resettable cycle counter which operates on 24V.



- **CYCLE006** Non resettable cycle counter, Inside mount.