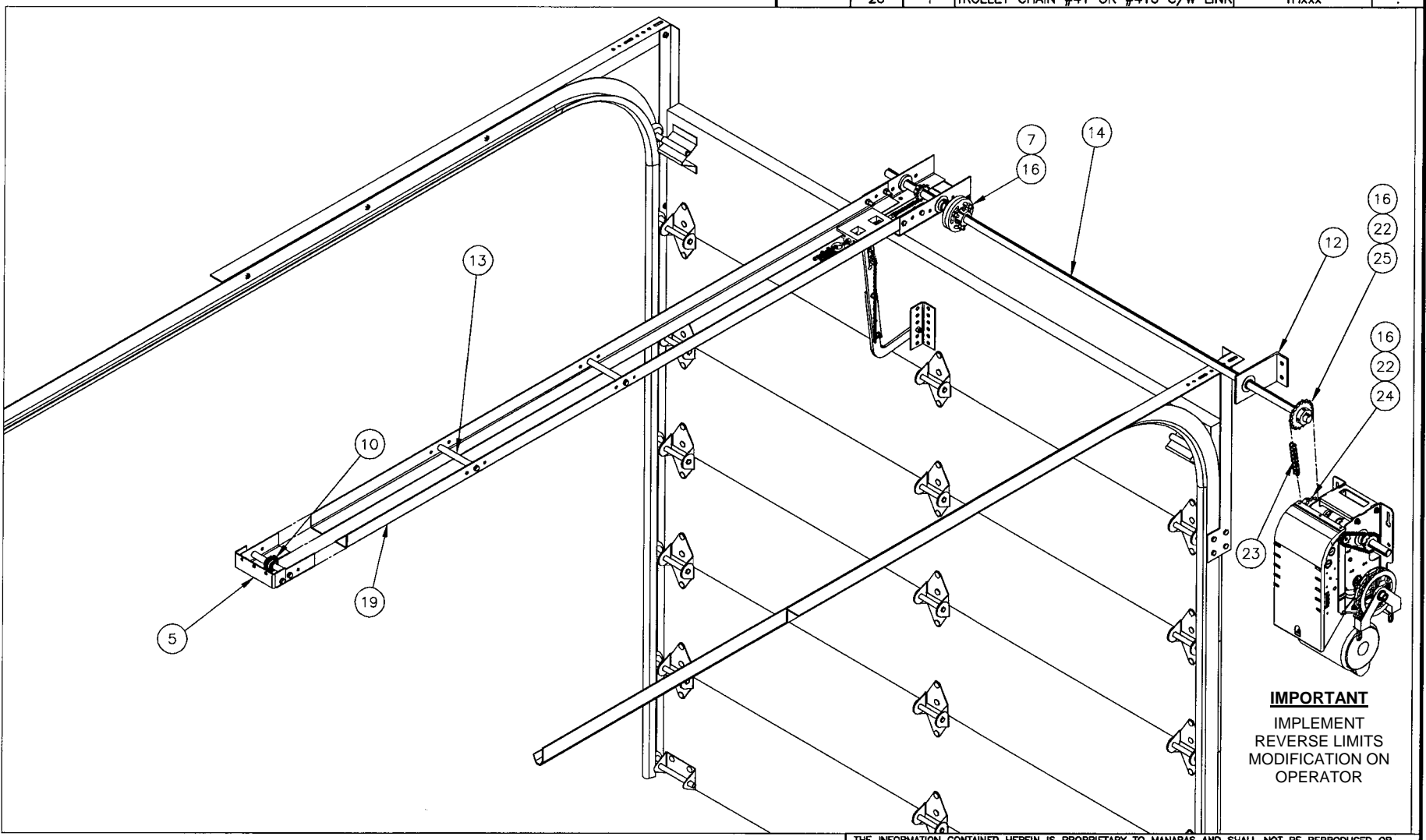
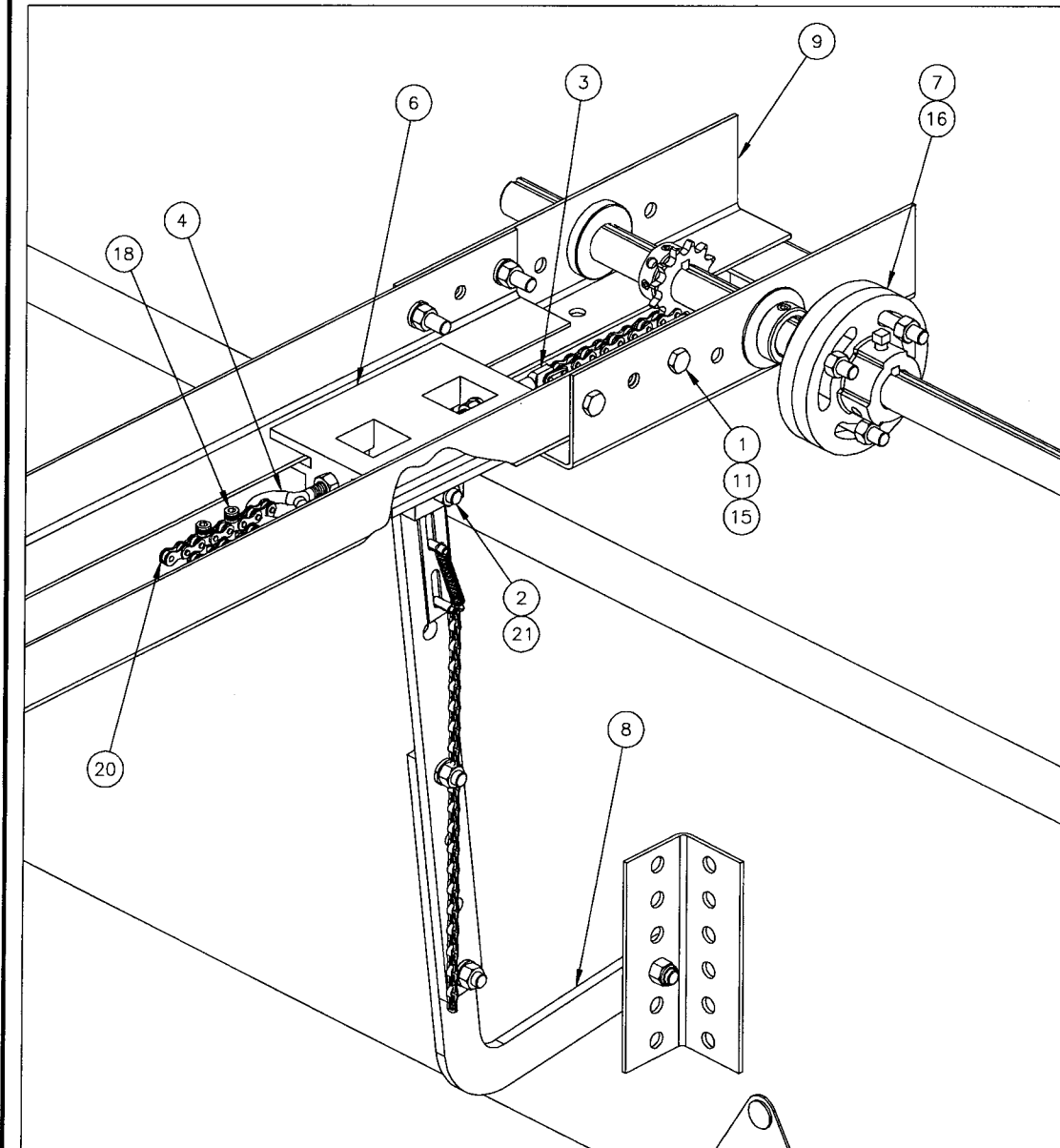


#	QTY	DESCRIPTION	# MANARAS	REV
7	1	SOLID COUPLING 1"	COUPLING005	.
8	1	DOOR LIFTING ARM ASS. TROLLEY	DOORARM001	.
9	1	FRONTIDLER#41 H.D. OR #410 H.D	FRONTIDLER006-009	-/A
12	1	BEARING PLATE ID1" OFF.5"	PLATE083	.
16	4	SQUARE SHAFT KEYS 1/4 X 1-1/2	KW019	A
22	4	SET S KNURLED CUPS/16-18X5/16	SCREW003	.
23	1	#50 ROLLAR CHAIN 4' 50-1R76P	CHAIN030	.
24	1	SPROCKET 50B12X1	SPR50B12x1	.
25	1	SPROCKET 50B18X1	SPR50B18x1	.
5	1	TROLLEY FRONT END U-BRACKET	BRACKET043	A
6	1	DIE CAST ALUMINIUM CARRIAGE	CARRIAGE004	.
10	1	FRONTIDLER ASSEMBLY #41 OR #410	FRONTIDLER010-007	-/C
13	1	TROLLEY TRACK SPACER	SHAFT017	C
1	6	HEX HEAD BOLT 3/8 x 1 1/4	BOLT026	.
2	1	HEX BOLT.375-16unc2.25	BOLT031	.
3	1	TAKE UP BOLT 3/8 X 2 1/2	BOLT035	.
4	1	EYEBOLT13/8 X 3	BOLT061	.
11	10	NUT 3/8	NUT010	.
15	8	LOCK WASHER 3/8	WASHER030	.
17	2	HEX NUT 10-32 NYLON	NUT019	.
18	2	10/32X1 BLACK BOLT W/NYLON NUT	SCREW025	.
21	1	STOP NUT 3/8	NUT022	.
14	1	1"X144"C12L14 SHAFT 1/4KW	SHAFT075	.
19	2	TRACK	TRACKxxx	.
20	1	TROLLEY CHAIN #41 OR #410 C/W LINK	THxxx	.

AUXILIARY Jxxx
AUX JHxxx
HARDKIT xxx
T1-HBAG
T1xx



IMPORTANT
IMPLEMENT
REVERSE LIMITS
MODIFICATION ON
OPERATOR

MOD060 - AUXILIARY TROLLEY DRIVE, #41 CHAIN

THE INFORMATION CONTAINED HEREIN IS PROPRIETARY TO MANARAS AND SHALL NOT BE REPRODUCED OR DISCLOSED OR USED FOR ANY DESIGN OR MANUFACTURE EXCEPT WHEN USER POSSESSES DIRECT WRITTEN AUTHORIZATION FROM MANARAS.

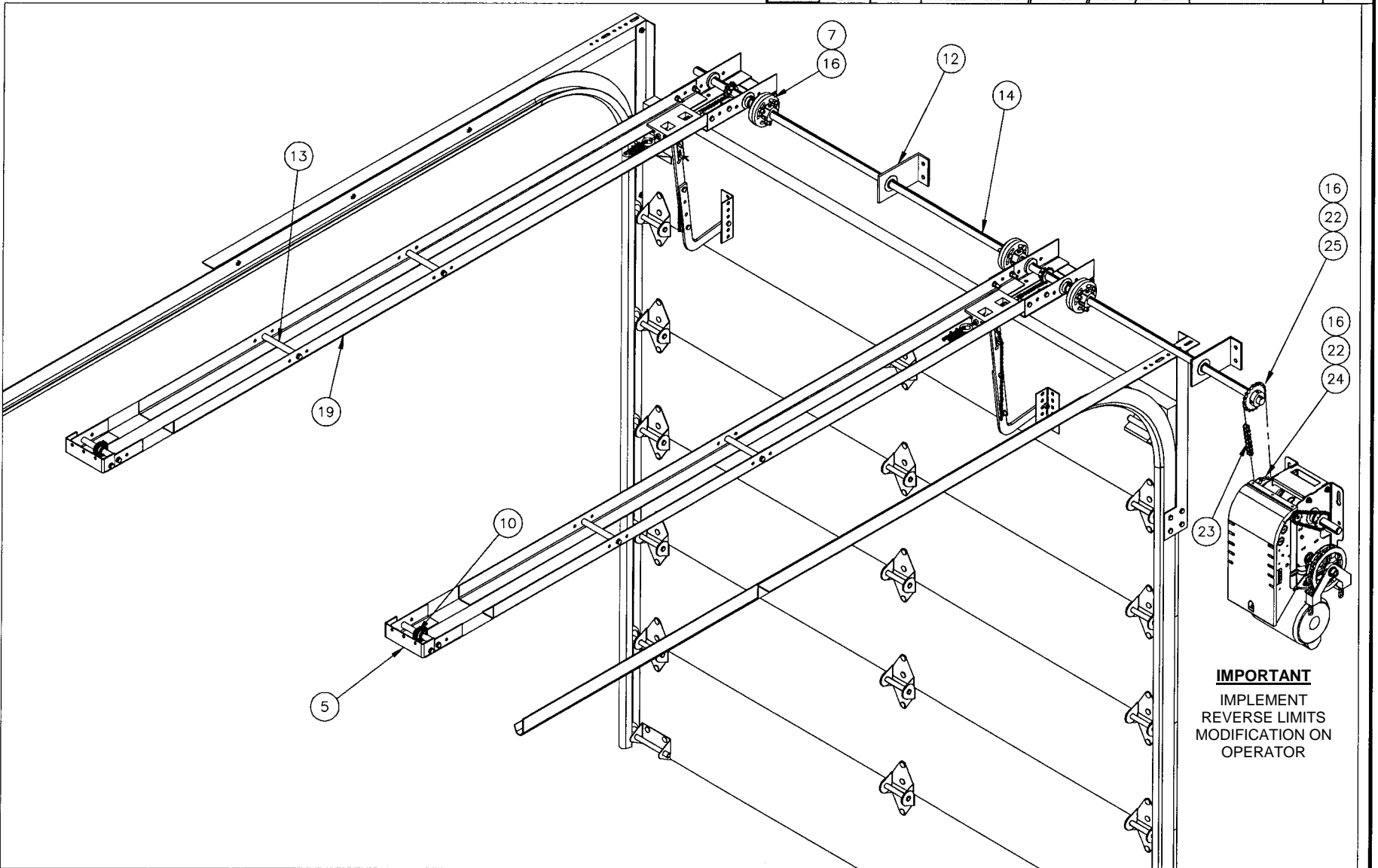
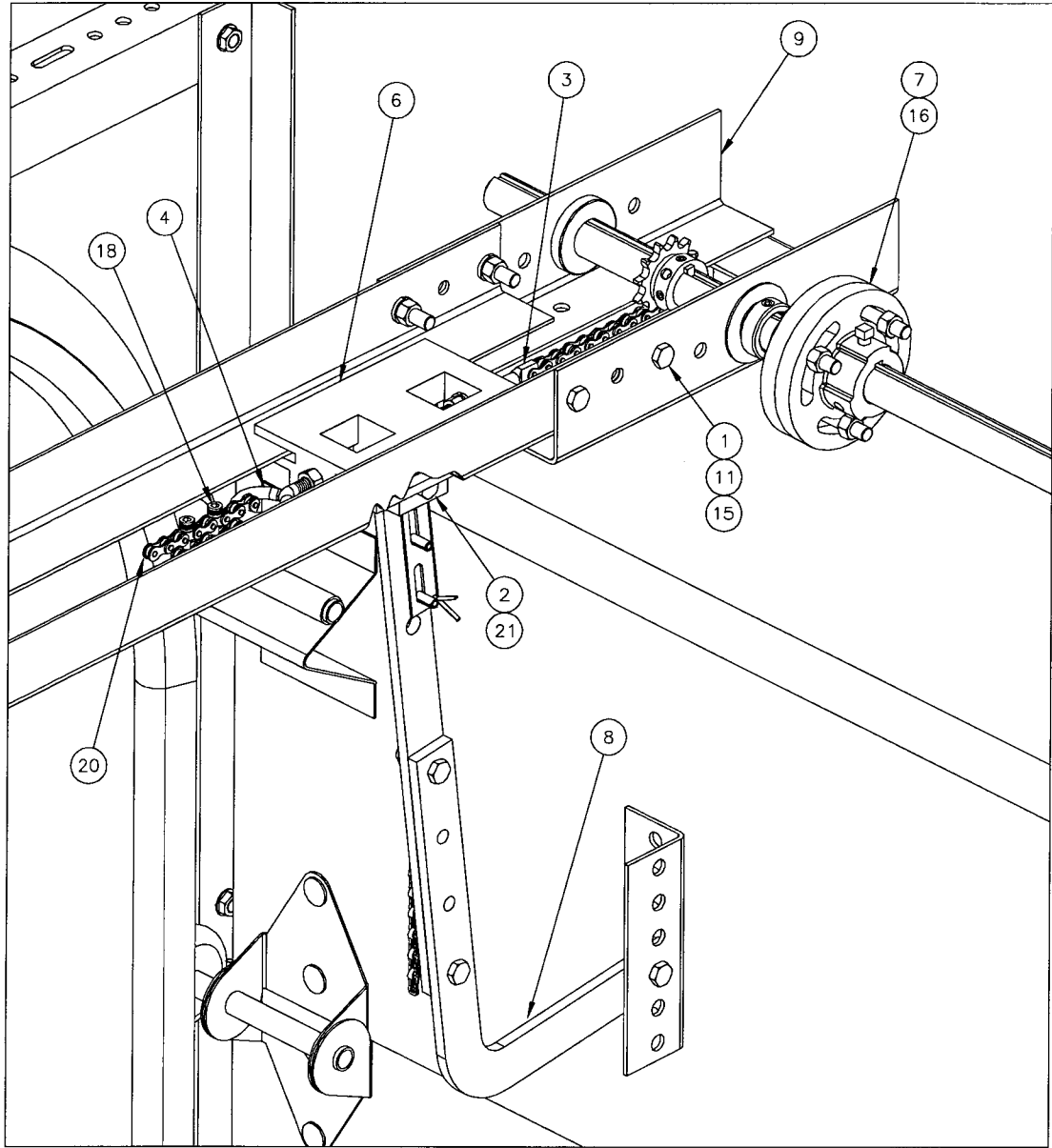
AUX. TROLLEY DRIVE INSTALL.(MOD060)

DRAWN BY:	DATE:	REV:	DATE:
NICOLAS VIAU	04.02.25	TROLLEY DRIVE	

MANARAS-OPERA
136 ONEIDA DRIVE
POINTE-CLAIRE, QC, H9R 1A8
TEL: 1-800-361-2260
FAX: 1-888-626-0606

AUX.JHxxx	7	1	SOLID COUPLING 1"	COUPLING005	.
	8	1	DOOR LIFTING ARM ASS. TROLLEY	DOORARM001	.
	12	1	BEARING PLATE ID1" OFF.5"	PLATE083	.
	16	4	SQUARE SHAFT KEYS 1/4 X 1-1/2	KW019	A
	22	4	SET S KNURLED CUPS/16-18X5/16	SCREW003	.
	23	1	#50 ROLLAR CHAIN 4' 50-1R76P	CHAIN030	.
	24	1	SPROCKET 50B18X1	SPR50B18x1	.
	25	1	SPROCKET 50B12X1	SPR50B12x1	.
	5	1	TROLLEY FRONT END U-BRACKET	BRACKET043	A
	6	1	DIE CAST ALUMINIUM CARRIAGE	CARRIAGE004	.
	10	1	FRONTIDLER ASSEMBLY #41 OR #410	FRONTIDLER010-007	-/C
	13		TROLLEY TRACK SPACER	SHAFT017	C
	HARDKITxxx	1	6	HEX HEAD BOLT 3/8 x 1 1/4	BOLT026
2		1	HEX BOLT.375-16unc2.25	BOLT031	.
3		1	TAKE UP BOLT 3/8 X 2 1/2	BOLT035	.
4		1	EYEBOLT13/8 X 3	BOLT061	.
11		10	NUT 3/8	NUT010	.
15		8	LOCK WASHER 3/8	WASHER030	.
17		2	HEX NUT 10-32 NYLON	NUT019	.
18		2	10/32X1 BLACK BOLT W/NYLON NUT	SCREW025	.
TI-HBAG	21	1	STOP NUT 3/8	NUT022	.

#	QTY	DESCRIPTION	# MANARAS	REV
1	6	HEX HEAD BOLT 3/8 x 1 1/4	BOLT026	.
2	1	HEX BOLT.375-16unc2.25	BOLT031	.
3	1	TAKE UP BOLT 3/8 X 2 1/2	BOLT035	.
4	1	EYEBOLT13/8 X 3	BOLT061	.
11	10	NUT 3/8	NUT010	.
15	8	LOCK WASHER 3/8	WASHER030	.
17	2	HEX NUT 10-32 NYLON	NUT019	.
18	2	10/32X1 BLACK BOLT W/NYLON NUT	SCREW025	.
21	1	STOP NUT 3/8	NUT022	.
5	1	TROLLEY FRONT END U-BRACKET	BRACKET043	A
6	1	DIE CAST ALUMINIUM CARRIAGE	CARRIAGE004	.
7	2	SOLID COUPLING 1"	COUPLING005	.
8	1	DOOR LIFTING ARM ASS. TROLLEY	DOORARM001	.
9	2	FRONTIDLER#41 H.D. OR #410 H.D	FRONTIDLER006-009	-/A
10	1	FRONTIDLER ASSEMBLY #41 OR #410	FRONTIDLER010-007	-/C
12	1	BEARING PLATE ID 1" OFF. 5"	PLATE083	.
13		TROLLEY TRACK SPACER	SHAFT017	C
16	4	SQUARE SHAFT KEYS 1/4 X 1-1/2	KW019	A
14	1	SHAFT 1", 12 FT WITH KW 1/4	SHAFT075	E
19	4	TRACK	TRACKxxx	.
20	2	TROLLEY CHAIN #41 OR #410 C/W LINK	THxxx	.



IMPORTANT
IMPLEMENT
REVERSE LIMITS
MODIFICATION ON
OPERATOR

MOD061 - DUAL AUXILIARY TROLLEY DRIVE, #41 CHAIN

THE INFORMATION CONTAINED HEREIN IS PROPRIETARY TO MANARAS AND SHALL NOT BE REPRODUCED OR DISCLOSED OR USED FOR ANY DESIGN OR MANUFACTURE EXCEPT WHEN USER POSSESSES DIRECT WRITTEN AUTHORIZATION FROM MANARAS.

TITLE: DUAL AUX. TROLLEY DRIVE INSTALL.(MOD061)

DRAWN BY:	DATE:	CHG FILE:	REV:	DATE:
NICOLAS VIAU	04.01.05	DUAL TROLLEY DRIVE	.	.

MANARAS-OPERA
136 ONEIDA DRIVE
POINTE-CLAIRE, QC, H9R 1A8
TEL: 1-800-361-2260
FAX: 1-888-626-0606