

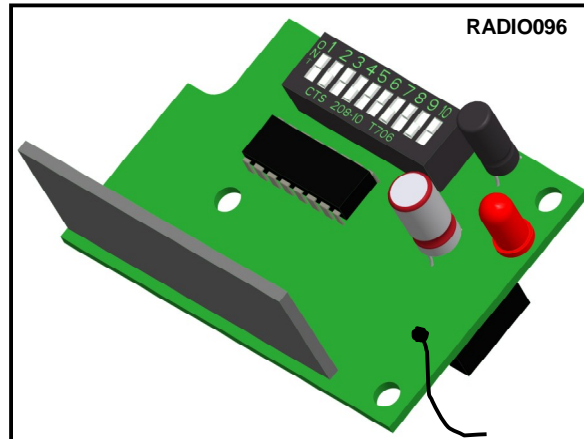
Installation & Programming Instructions

RADIOKIT003 (RADIO096)

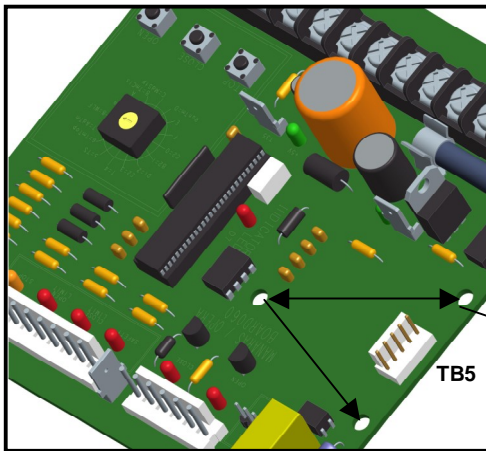
MR-1000 receiver; compatible with MT series transmitters, operational on 24VDC, red LED indicates the unit is activated

Important

RADIOKIT003 is applicable only to BOARD060 and BOARD066



Step by step installation instructions of RADIOKIT003 in an existing operator

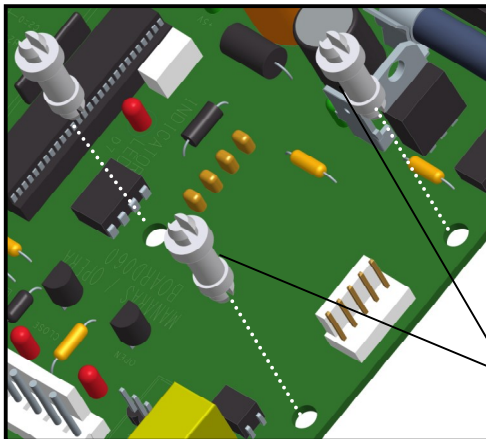


Step 1: Locate the 3 mounting holes and the terminal TB5 provided on the control board (BOARD060) to mount the radio receiver (RADIO096)

Mounting holes

Please check if all the following parts are supplied with RADIOKIT003

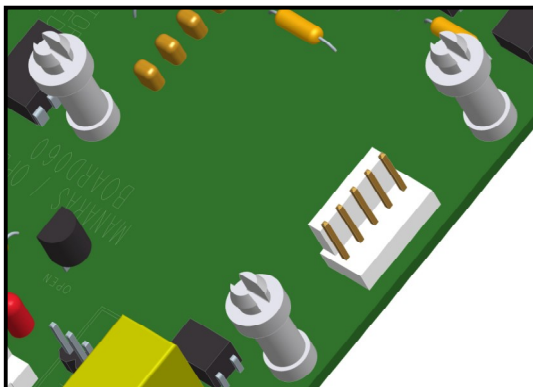
Part No.	Qty
RADIO096	1
Technical Note (TNE016)	1
Holding support	3



Step 2: Fix the 3 supports in the mounting holes provided on the control board

Note: Supports are supplied with RADIOKIT003

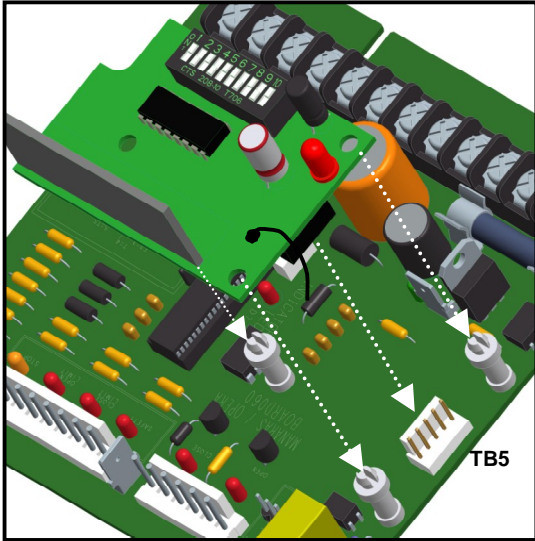
Mounting supports



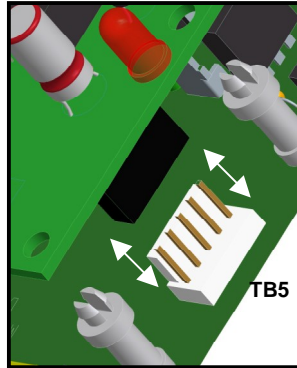
Important

Make sure that all the supports are secured and properly mounted on the board.

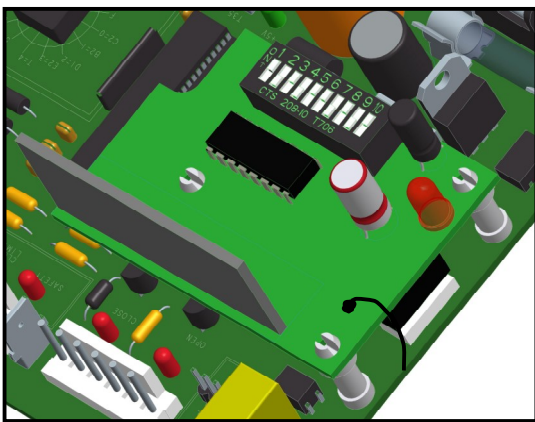




Step 3: Mount the radio receiver (RADIO096) on the supports. Make sure to align the socket from the receiver with the terminal TB5 on the control board

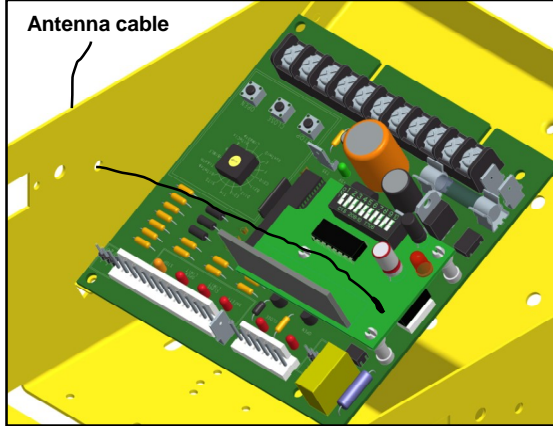


Important
Make sure that the 5 pins of TB5 are properly inserted into the radio receiver's socket (RADIO096)



Step 4: Secure the radio receiver on the supports and on the pins of TB5.

Note: Verify that the radio receiver is secured on the control board



Note: Opera control box is shown as example

Antenna cable

Note
For N4/12 & N4X applications, customer should drill a hole in an appropriate location of the control box to pass the antenna cable.

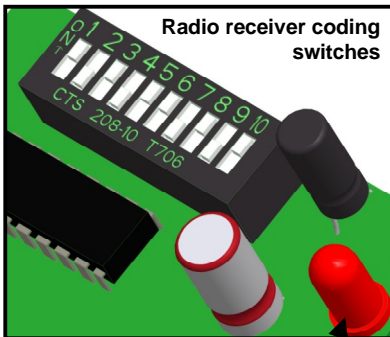
Step 5: Pass the antenna cable through one of the nearest holes in the control box next to the control board.

Note: For a better reception, avoid crossing the antenna cable over a power line (motor or line wires)

Coding the radio receiver and transmitter

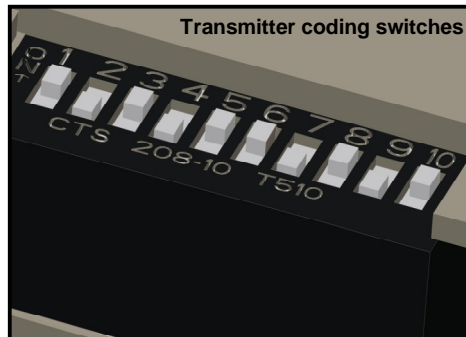
Note: RADIO096 functions with single button transmitters (open/close) only. The ECB selector switch should be on B2 mode (on 1 = momentary contact to open and to close)

Setting radio receiver (RADIO096) and transmitter dip switches



Radio receiver coding switches

Red LED, ON only when the receiver is activated



Transmitter coding switches

Important

All the appropriate receivers are available at Manaras-Opera and to all its authorized suppliers

1. Open the back cover of the transmitter to gain access to the 10 coding switches.
2. Use a small screwdriver or knife to set both the transmitter and receiver coding switches identically (your private code setting) **Do not set all switches in the same position, example: not all on OFF or ON.**

Note: The setting shown is an example and should not be repeated on more than one door.

Important

This coding applies only to a single button transmitter. For two or three button transmitters, please refer to the notes supplied with or call Manaras-Opera's tech support for more assistance.

