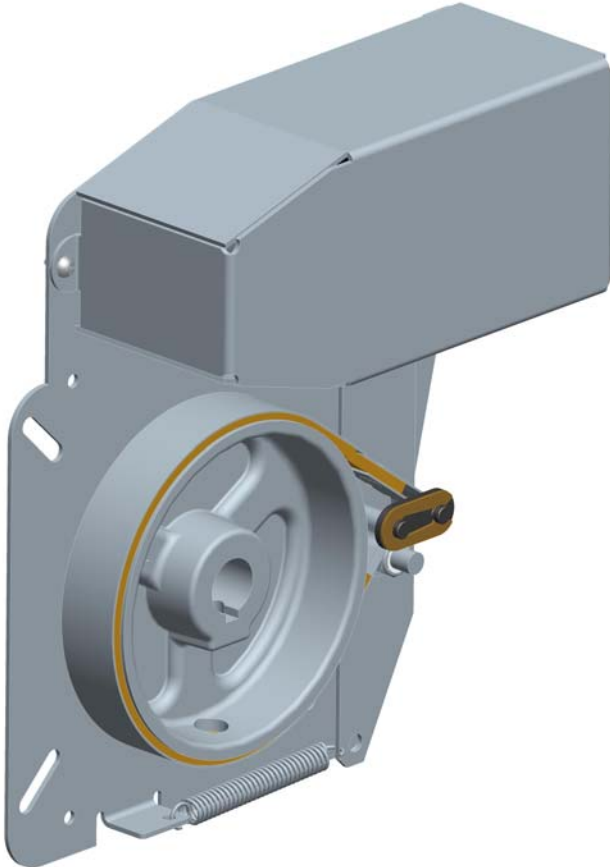


Installation and Adjustment Instructions

Band Brake (MOD111 for Opera-J)



Note: Read this manual carefully before starting any intervention on the operator. Place this installation manual in an accessible location near the operator for future reference record:

Model # _____

Date _____

Wiring Diagram # _____

Door No. # _____



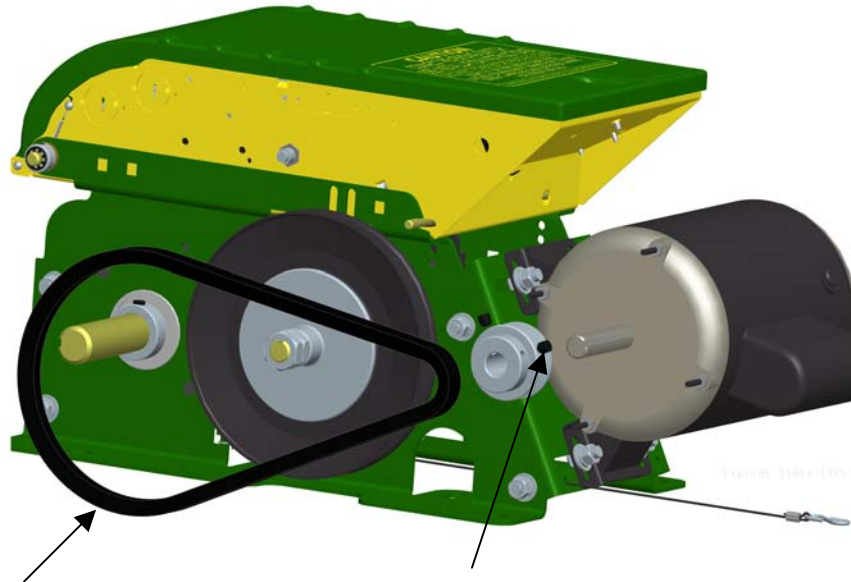
Step by step solenoid brake installation instructions:



WARNING

Before starting any intervention, please shut OFF the main power from the operator or the control

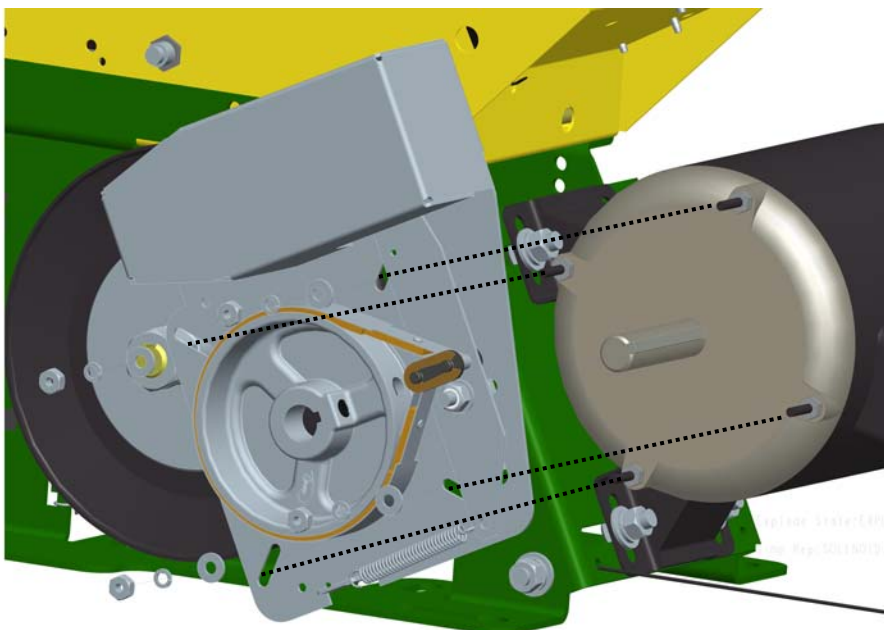
1st step: Remove the V-BELT and the motor pulley from the operator.



1st: Take out the V-Belt from the motor & the drive pulley

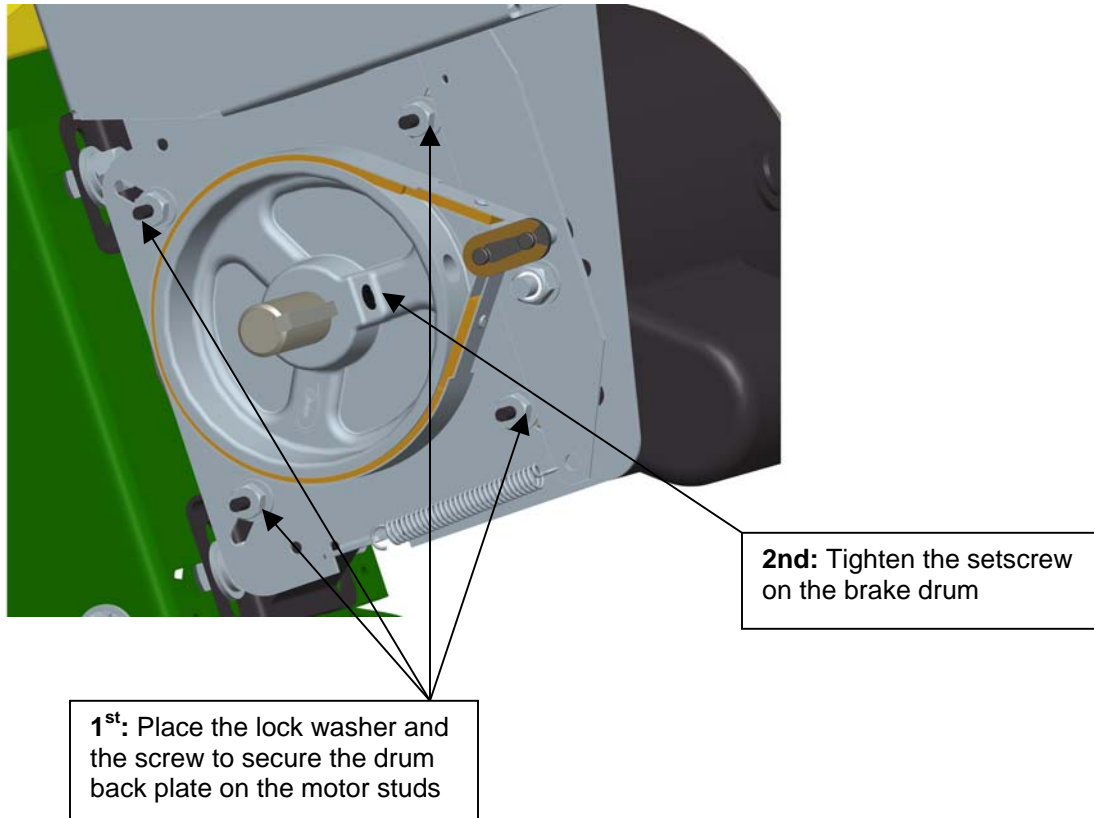
2nd: Loose the setscrew on the motor pulley and remove it from the motor shaft.

2nd step: Mount the solenoid brake kit on the electrical motor.

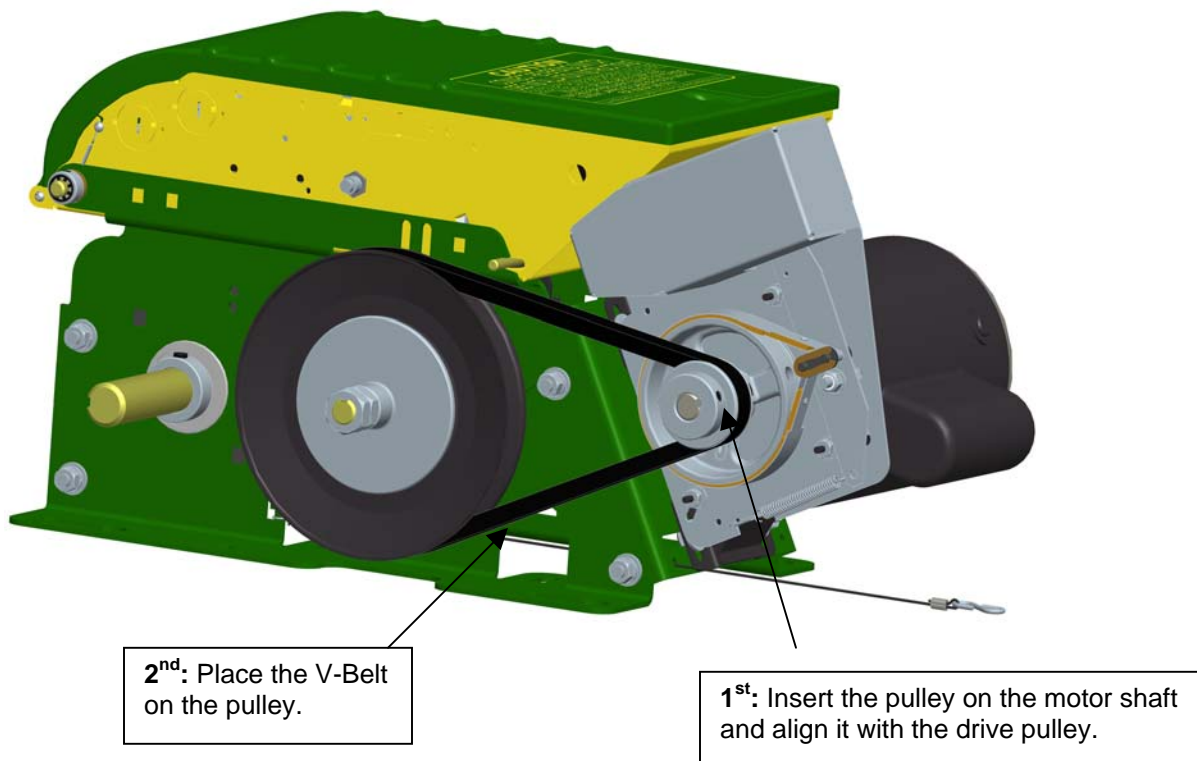


Slide the brake drum assembly onto the motor shaft. Align the four holes on back plate with studs on electrical motor.

3rd step: Secure the brake kit on the electrical motor.

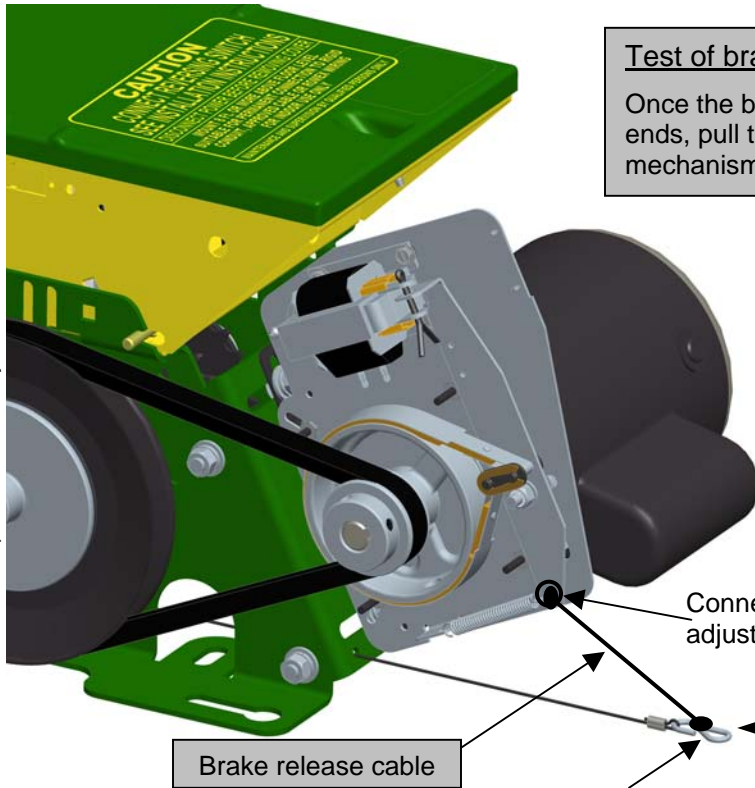


4th step: Mount the motor pulley and the V-Belt.



5th step: Connect brake release cable.

Picture of operator shown only as reference



Test of brake and disconnect release mechanism:
 Once the brake release cable is connected on both ends, pull the disconnect chain and check if the mechanism is released to operate the manually.

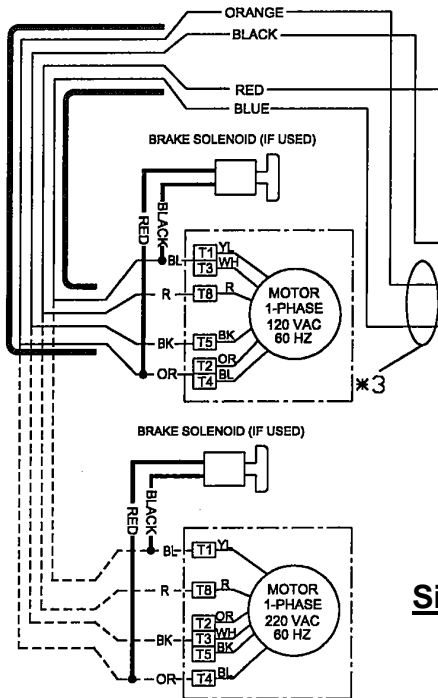
Connect one end of the brake release cable to the adjustment lever by passing it through the hole.

Both hooks connected to the disconnect chain

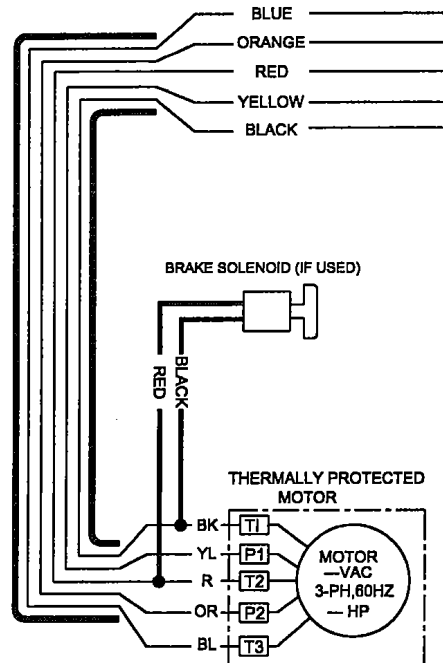
1st: Tie the second end of the brake release cable to the hook supplied in the kit.

2nd: Attach the hook and the cable to the hook of the disconnect chain and tighten both

6th step: Connect solenoid brake to the electrical motor.



Single phase



3-phase

7th step: Adjustment of brake band

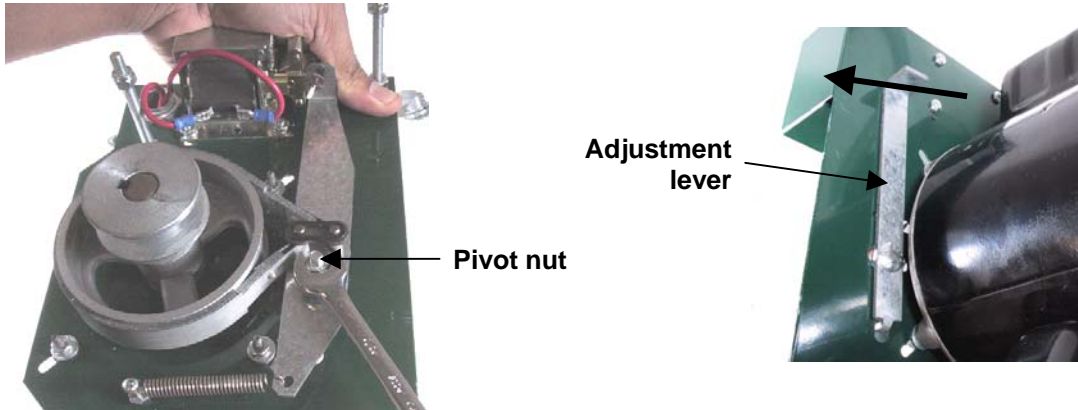


WARNING

BEFORE PERFORMING ANY CHANGES TO THE OPERATOR, BE SURE THAT THE MAIN POWER IS OFF.

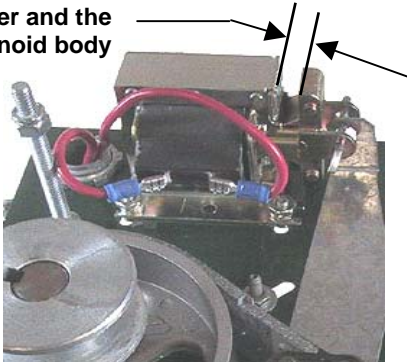
NB: The pictures shown are only for reference. Some parts may differ from pictures shown

Once the brake band and the other parts has been placed, please refer to the pictures and instructions below to properly adjust the brake.



1. Slightly unscrew the pivot nut using the appropriate key (7/16") or a nut driver.
2. Press the brake lever towards the solenoid to adjust the gap between the plunger and the solenoid body, meanwhile pull the brake adjustment lever away from the motor to put tension on the band.

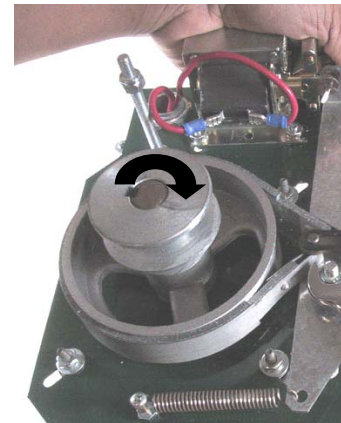
1/4" to 3/8" gap between the plunger and the solenoid body



3. The gap between the plunger and the solenoid body should measure 1/4" to 3/8" wide.



4. Tighten the pivot nut and recheck the gap measurement.



5. Check the Brake adjustment:
 - Verify that the brake drum does not rotate by hand.
 - Manually push the plunger onto the solenoid body, and verify that the brake drum rotates easily by hand.
6. Once the adjustment has been completed, reinstall the solenoid cover.

NOTES



Commercial Door OPERATOR



Manaras-Opera is extending their well-known OPERA brand name across its entire line of Commercial Door OPERATORS. Over the years, the OPERA brand name has become synonymous with innovation and reliability. The high quality products you have come to expect from us will now be backed by the OPERA brand name.

When you think Commercial Door OPERATORS, just think OPERA.

Call us for more information:
1-800-361-2260



"Easy to install. Easy to use. Year after year."

www.manaras.com