

Installation & Instructions Manual

Adding a 1.5 sec Time delay on:

**(Opera series & models
MTH/MTBH/GH/MGH/MSJ/MJH/MGT/MSLD/MGSLD)
operators**

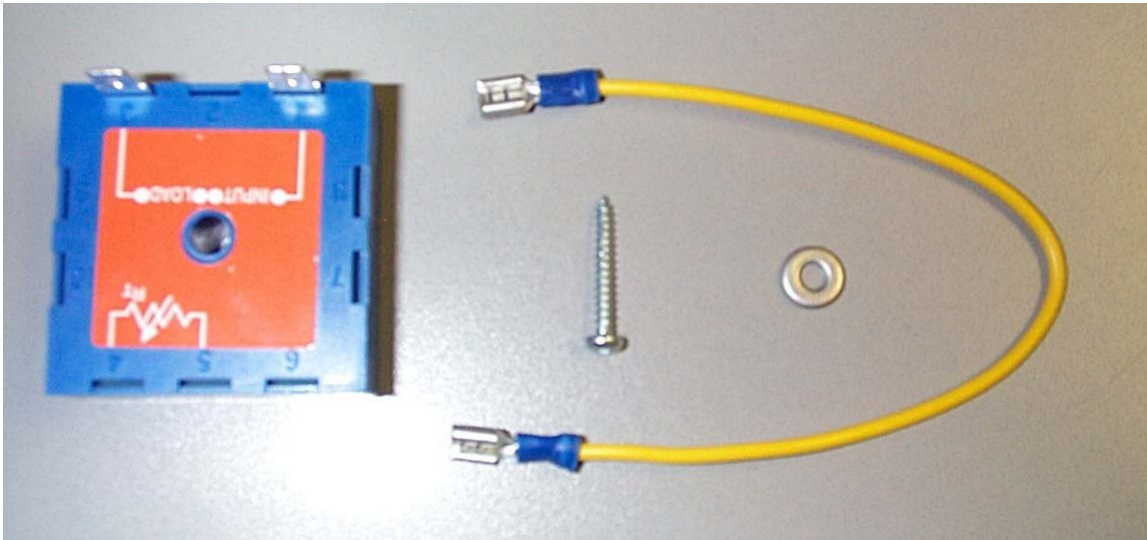
Note:

For all general information, refer to
Installation and Instruction Manual
supplied with the operator.



Parts required and supplied.

Door will stop for 1.5 seconds in closing cycle and reverse to fully open position.
Suggested on large doors and high cycle applications.



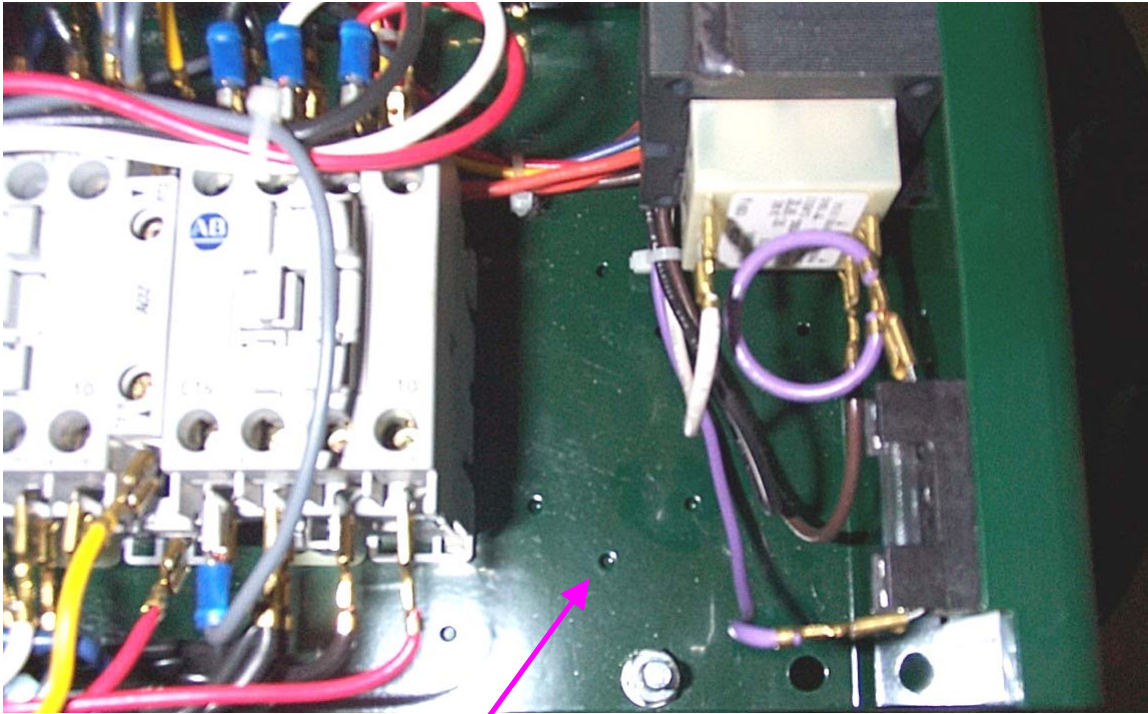
B.O.M.

1	TIMER 013	Time Delay, 1.5 sec., 24 Volts
1	SCREW 012	Wood Screw #6 x 1"
1	WASHER 002	Flat Washer 3/16-BS8
2	CONNECTOR 011	Insulated Spade Terminal 250
8"	WIRE 025	Wire 18 gage, 16 strand, Yellow

NOTE:

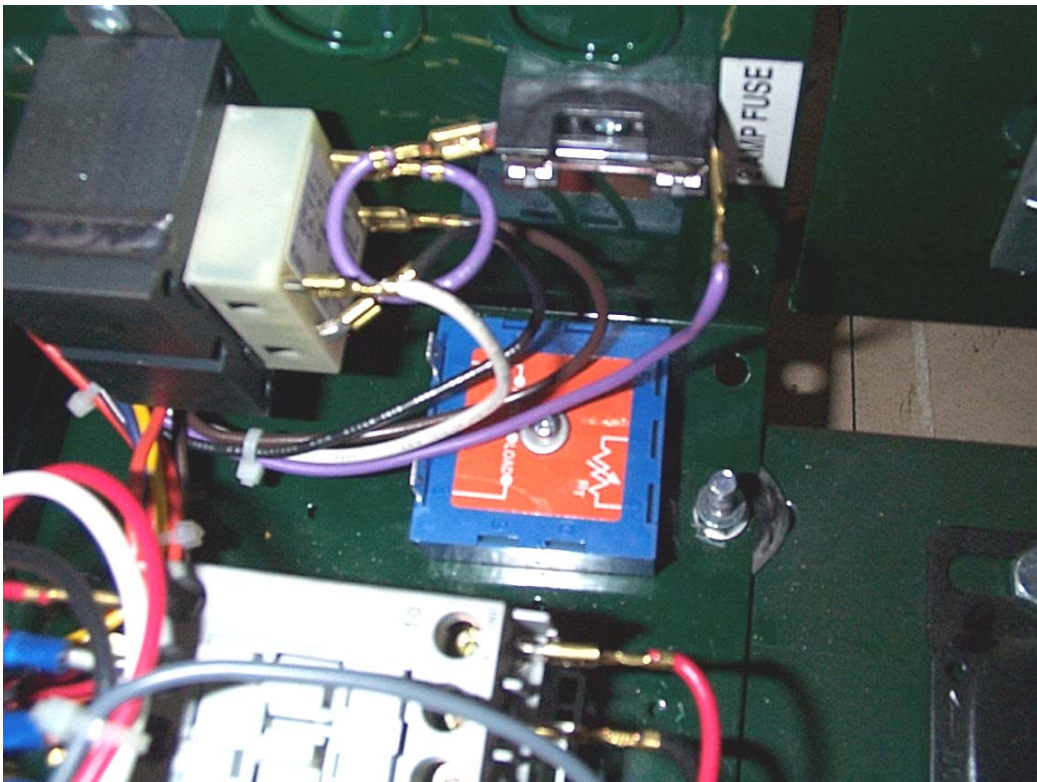
Some pictures in this instruction manual may differ from the electrical components found in the operator's control box. Pictures are shown for reference only. Wiring instructions remains the same even if the electrical components make are different.

The Time Delay will be install at the right of the contactor in a pre-drilled hole.



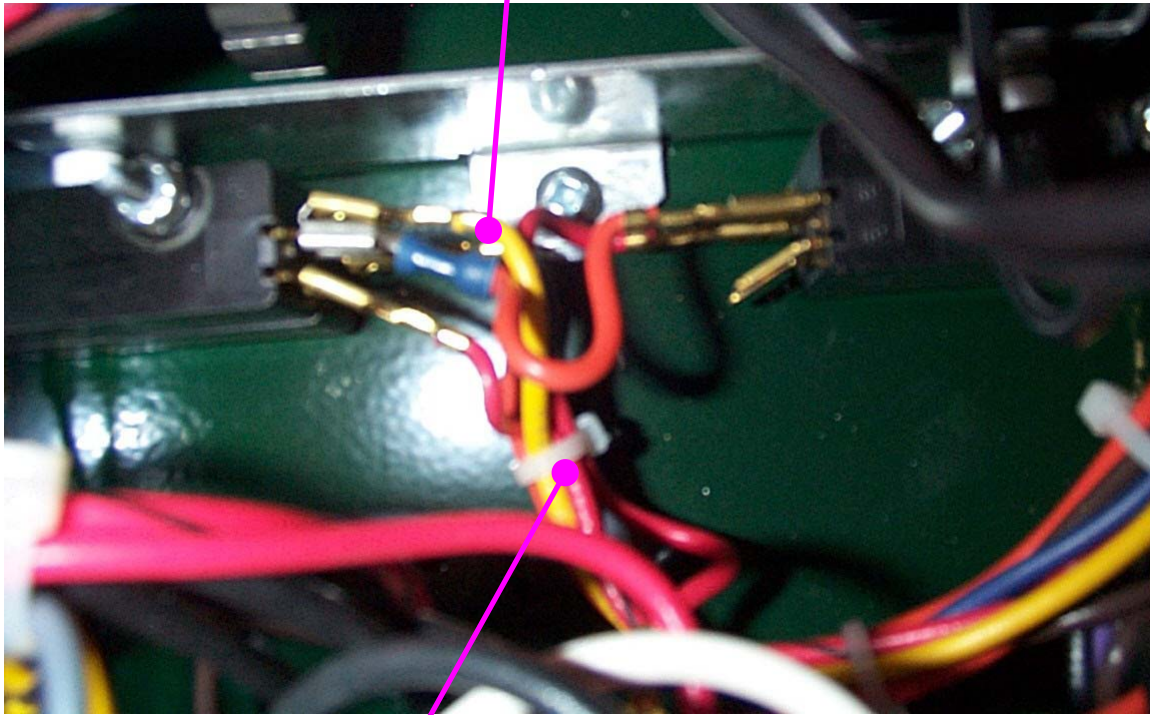
Hole for Time Delay

**Install the timer with the connectors facing the T-strip.
The washer is between the timer and the screw head.**

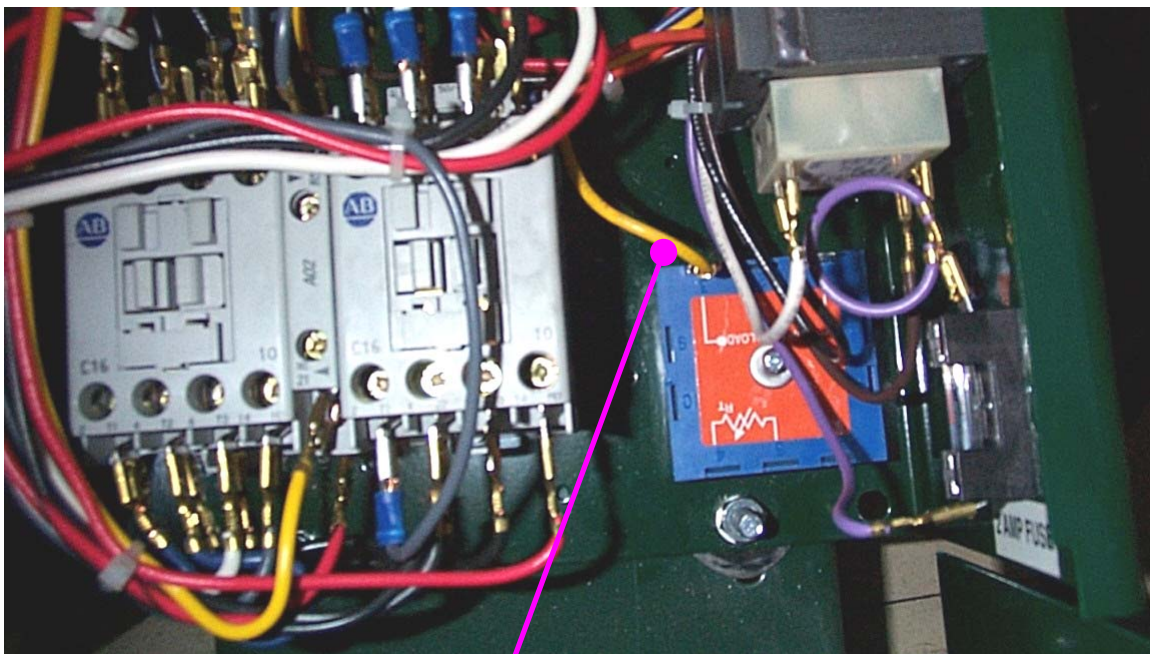


For more assistance, please contact our technical support department at 1-800-361-2260

**Remove the Yellow wire from the Adv.
Open Limith Switch**

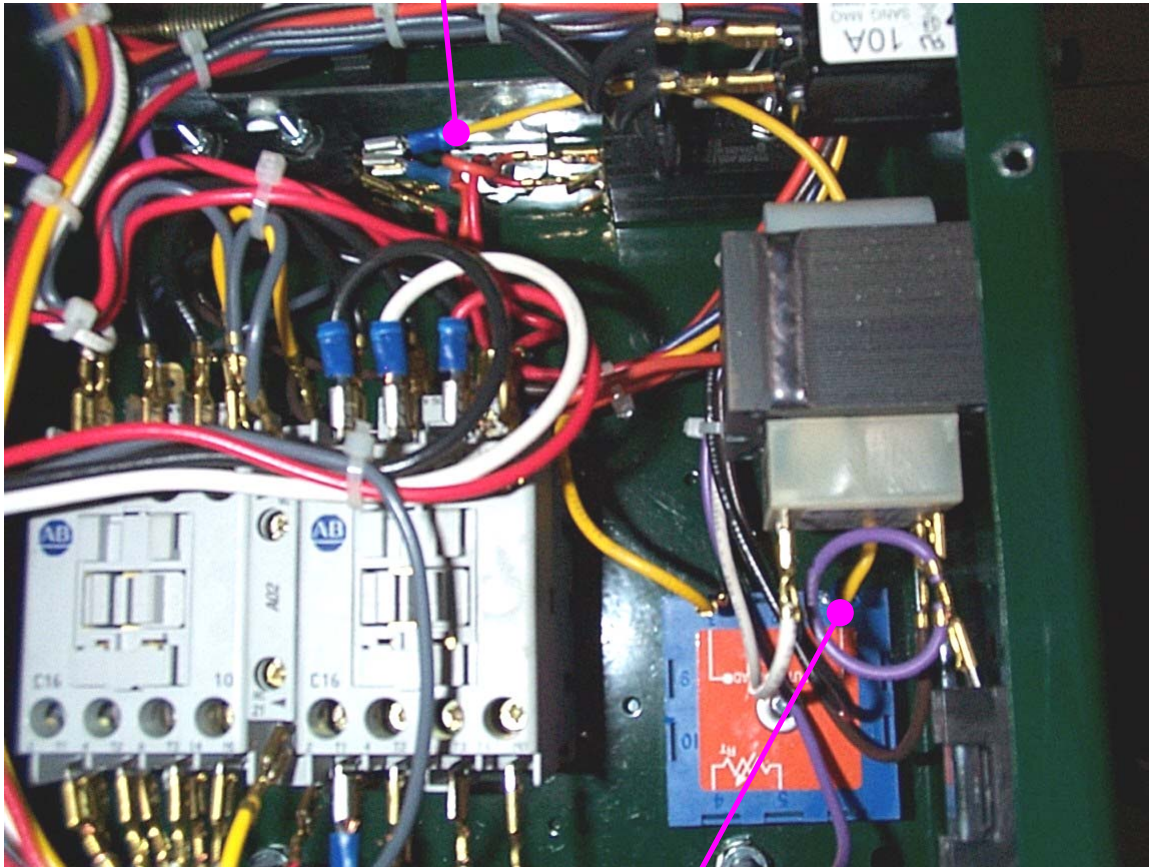


Cut and remove this tie-wrap.



Connect this yellow wire to « LOAD » pin on the timer.

One end to the
Adv. Open Limit



One end to the
« INPUT » timer pin

Connect one end of the 8" long yellow wire to the « INPUT » pin on the timer.
Connect the other end to the Adv. Open Limit Switch.

ATTENTION: Verify the connectors are properly installed and have a strong grip.

When the modification is finish, a complete electric test is necessary (refer to page 8).

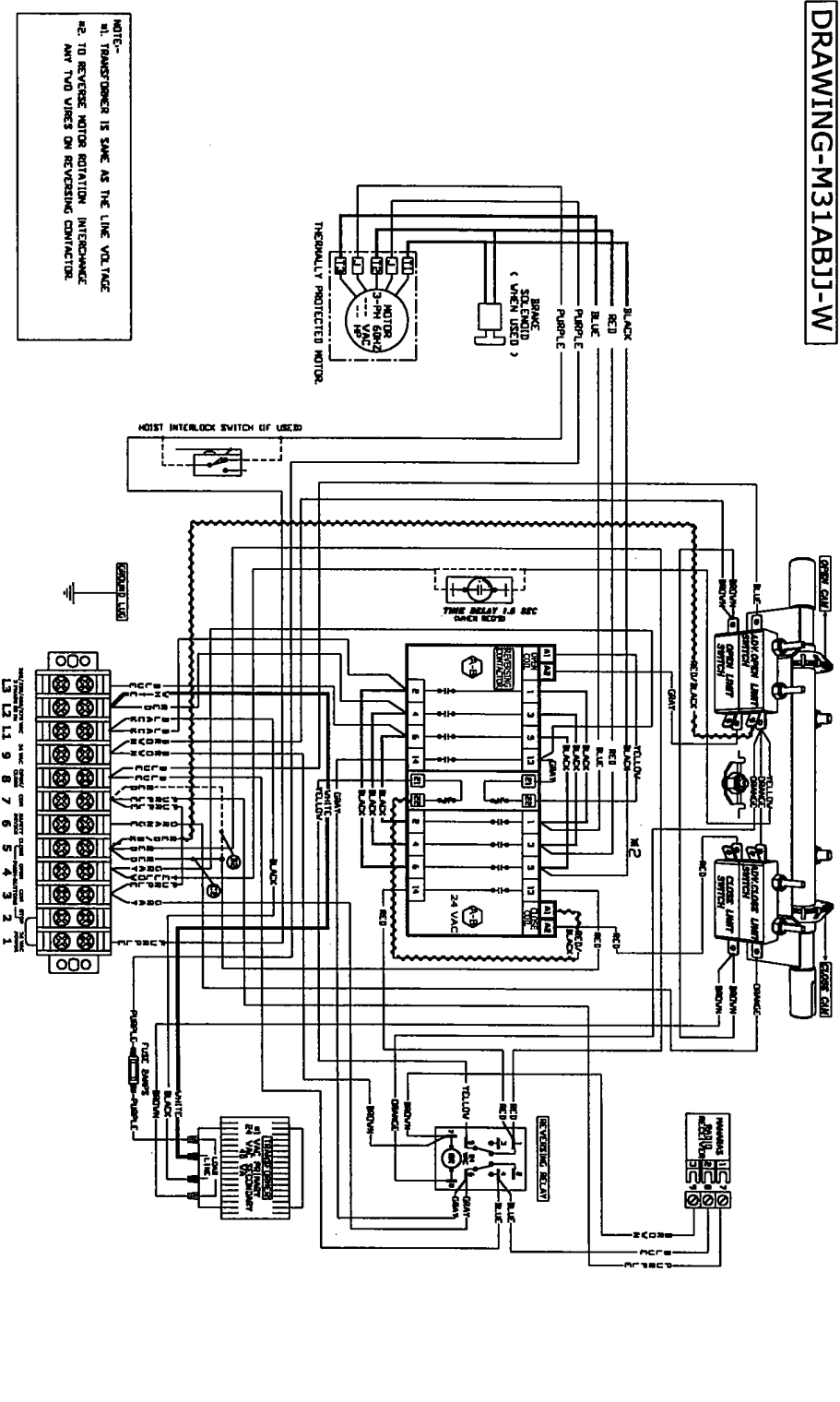
ELECTRIC TEST

PERFORM TESTS ON THE MAIN TERMINAL OR USED 3 PUSH BUTTON STATION & REVERSING EDGE.

<p>A. Momentarily jump terminal 3 and 4. The door will <u>open</u> instantly. Allow it open completely.</p>
<p>B. Momentarily jump terminal 3 and 4. Nothing should happend. (It is a safety verification)</p>
<p>C. Momentarily jump terminal 3 and 6. Nothing should happend. (It is a safety verification)</p>
<p>D. Momentarily jump terminal 3 and 5. The door will <u>close</u> instantly. While closing, go to step E.</p>
<p>E. Momentarily jump terminal 3 and 6. The door will stop instantly and reverse to <u>open</u> 1.5 sec. later. Allow it open completely.</p>
<p>F. Momentarily jump terminal 3 and 5. The door will <u>close</u> instantly. While closing, go to step G.</p>
<p>G. Push the Radio Control button. The door will stop instantly and reverse to <u>open</u> 1.5 sec. later. Allow it open completely.</p>
<p>H. Push the Radio Control button. The door will <u>close</u> instantly. Allow it close completely.</p>
<p>I. Momentarily jump terminal 3 and 6. Nothing should happen. (It is a safety verification)</p>
<p>J. Momentarily jump terminal 3 and 4. The door will <u>open</u> instantly. Allow it open at mid-course and go to step K.</p>
<p>K. Turn OFF the power. The door will stop.</p>

3-phase standard wiring diagram.
 Note: Adding a time delay on a single phase or on a 3-phase has no difference.

DRAWING-M31ABJ-W



- 1 ON SITE MODIFICATIONS
- NOTE:
 - C2 ↔ B2
 - 1A REMOVE THE RED WIRE WITH RAPID CONNECTOR FROM TERMINAL #5, AND TRANSFER IT TO TERMINAL #7.
 - B2 ↔ C2
 - 1B REMOVE THE RED WIRE WITH RAPID CONNECTOR FROM TERMINAL #5, AND TRANSFER IT TO TERMINAL #7.
- WARNING:

MOTORIZED DOORS CAN CAUSE SERIOUS INJURIES AND DEATH. ALWAYS STRONGLY DISCONNECT THE HOUSE OF BRIDGES PROTECTION SYSTEMS ESPECIALLY IN THE CASES OF MOMENTARY CONTACT TO CLOSE AS IN B2 WIRING OR TIMER TO CLOSE.
- 2 CONSTANT PRESSURE OPEN
 1. REMOVE THE GRAY WIRE FROM TERMINAL #3 AND PLACE IT ON TERMINAL #4
- 3 WIRING FOR INSTANT STOP (ON SAFETY ROBS OR DEVS)
 1. REMOVE THE YELLOW WIRE FROM ADV. OPEN LIMIT SWITCH, AND CAP IT.
 2. REMOVE THE BLUE WIRE FROM PIN #4 OR REVERSING RELAY(RR) AND CAP IT.
- 4 AROUND A TIME DELAY OR REVERSE
 1. REMOVE THE YELLOW WIRE FROM THE BLUE WIRE FROM THE END OF THE CONTACT. (SEE NOTE 3)
 2. FROM OTHER END OF THE YELLOW WIRE TO ONE END OF THE CONTACT. (SEE NOTE 3)
 3. FROM OTHER END OF THE YELLOW WIRE TO OTHER END OF THE CONTACT. (SEE NOTE 3)
- 5 CONSTANT PRESSURE OPEN & CLOSE - B1

PERFORM THE MODIFICATION EXPLAINED IN THE NOTES, 1B, 2 AND 3
- 6 ANY OTHER OPTIONS

FOR ANY OTHER OPTIONS, LINE, THERE TO CLOSE, STOP, STOP, LONG DISTANCE MODULE, PLEASE CONSULT OUR MANAGERS AT 1-800-361-2260/1-888-77-6767(USA)

LINE POWER	24 VAC POWER	EXTERNAL INTERLOCK	SAFETY REVERSE	OPEN/CLOSE COMMAND	PUSH-BUTTON STATION	TWO PUSH-BUTTON STATION	RADIO CONTROL
11 12 13 	1 9 	1 2 	3 6 	7 8 	2 3 4 5 	2 3 4 5 	7 8 9
POWER SUPPLY 7 3 PH. 24 VAC 24 VAC POWER AVAILABLE FROM WALL FACTORY DETAILLED JUMPS REMOVE IF EXT. INTERLOCK IS USED CONTACT FOR SAFETY REVERSE DEVICE CONTACT FOR OPEN/CLOSE DEVICE NOTE - B1 & 2 JUMPS BETWEEN TERMINAL 2 AND TERMINAL 3 IF STOP BUTTON IS NOT USED RADIO RECEIVER							
ATTENTION- USE 18AVG OR HIGHER FOR WIRING ALL EXTERNAL CONNECTIONS							

MIRING DIAGRAM FOR MGR/GR/INT/NCSD
200/400/675 VAC, 3 PHASE MOTORS
M31ABJ-W

TITLE	REV	DATE
PROJECT	DESIGN	DATE
CLIENT	ENGINEER	
DISTRIBUTION	BY	
M.F.D. BY MANABAS AUTO DOORS INC.		

Single phase Opera series wiring diagram. 8

Note: Adding a time delay on a single phase or on a 3-phase has no difference.

