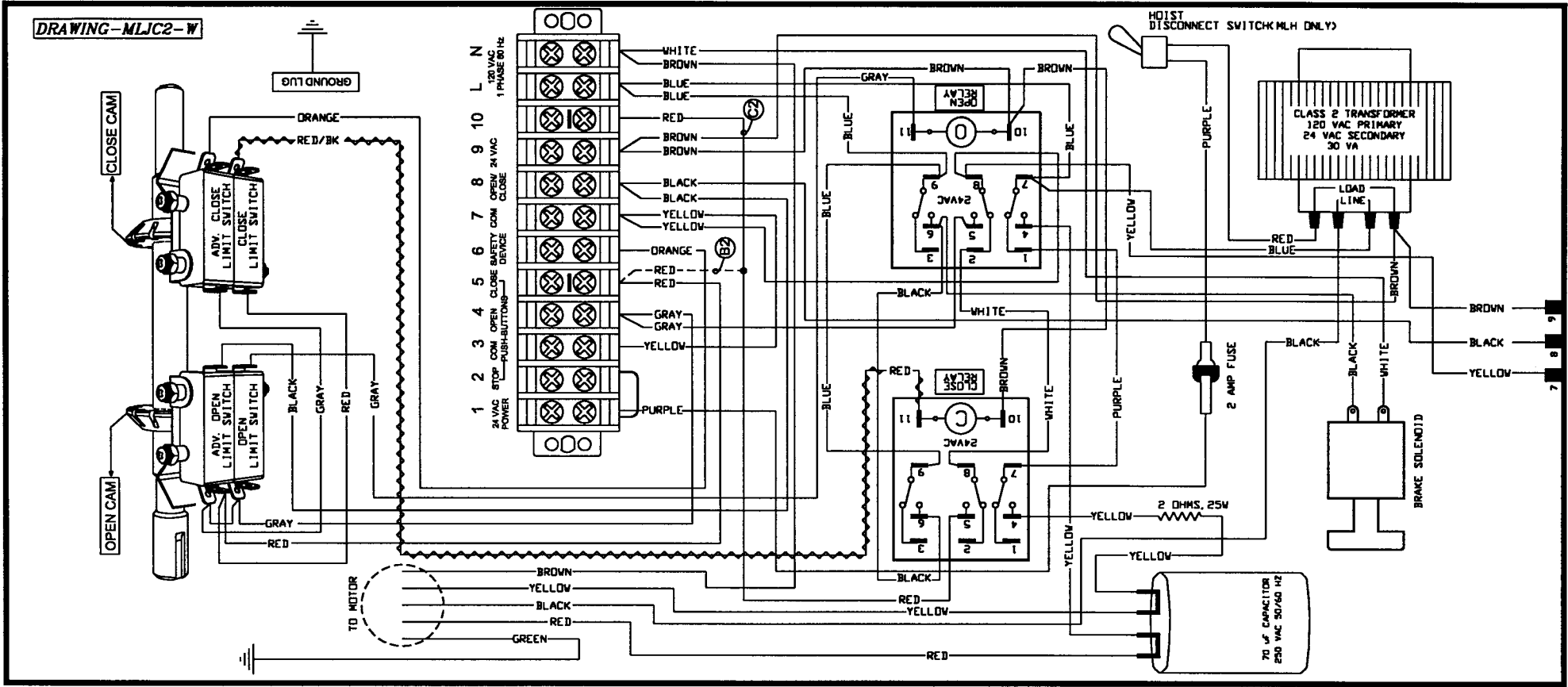
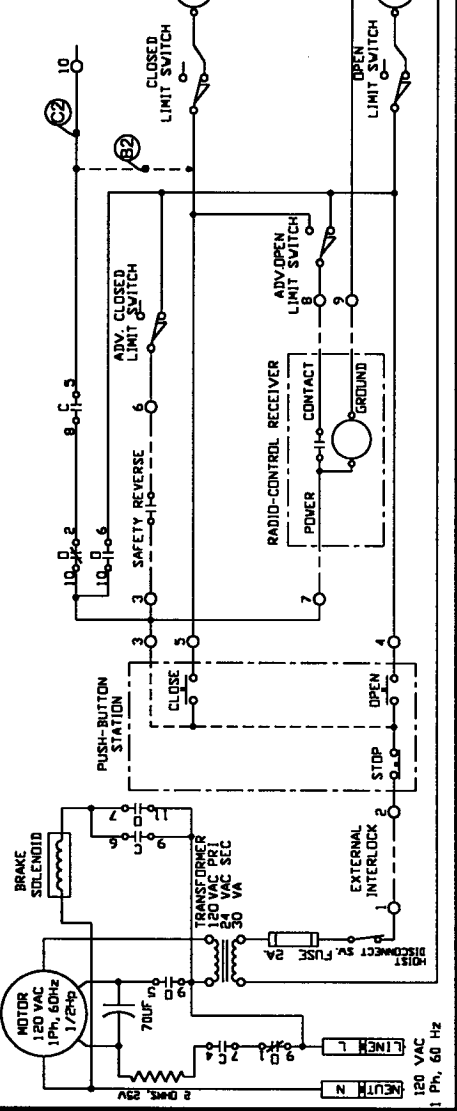


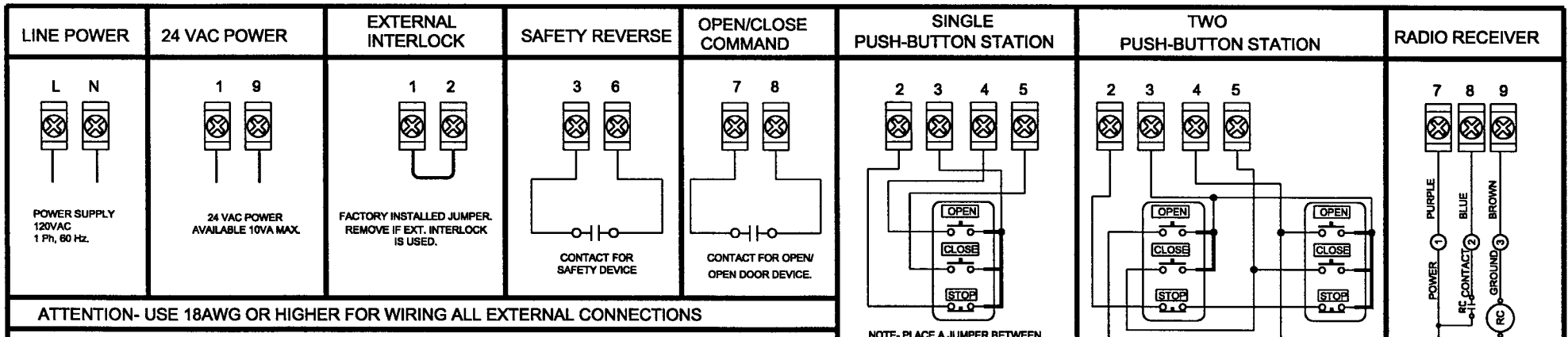
DRAWING-MLJC2-W



WIRING SCHEMATIC



EXTERNAL WIRING



ATTENTION- USE 18AWG OR HIGHER FOR WIRING ALL EXTERNAL CONNECTIONS

NOTE- C2 / B2

- C2 ⇨ B2 REMOVE THE RED WIRE WITH RAPID CONNECTOR FROM TERMINAL#10 AND TRANSFER IT TO TERMINAL # 5.
- B2 ⇨ C2 REMOVE THE RED WIRE WITH RAPID CONNECTOR FROM TERMINAL#5 AND TRANSFER IT TO TERMINAL # 10.

WARNING:



MOTORIZED DOORS CAN CAUSE SERIOUS INJURIES OR DEATH. MANARAS STRONGLY RECOMMENDS THE USE OF ENTRAPMENT PROTECTION SYSTEMS, ESPECIALLY IN THE CASE OF MOMENTARY CONTACT TO CLOSE AS IN B2 WIRING.

PROJECT				
TITLE WIRING DIAGRAM FOR LIGHT DUTY OPERATOR MODEL-MLJ/MLH				
CLIENT				
ENGINEER				
DISTRIBUTOR				
MANUFACTURER				
MANARAS AUTO DOORS				
DATE	DESIGNER	AUTOCAD FILE	DRAWING NO.	REV
27. AUG. 2002	BP	DL	MLJRES-V	MLJRES A