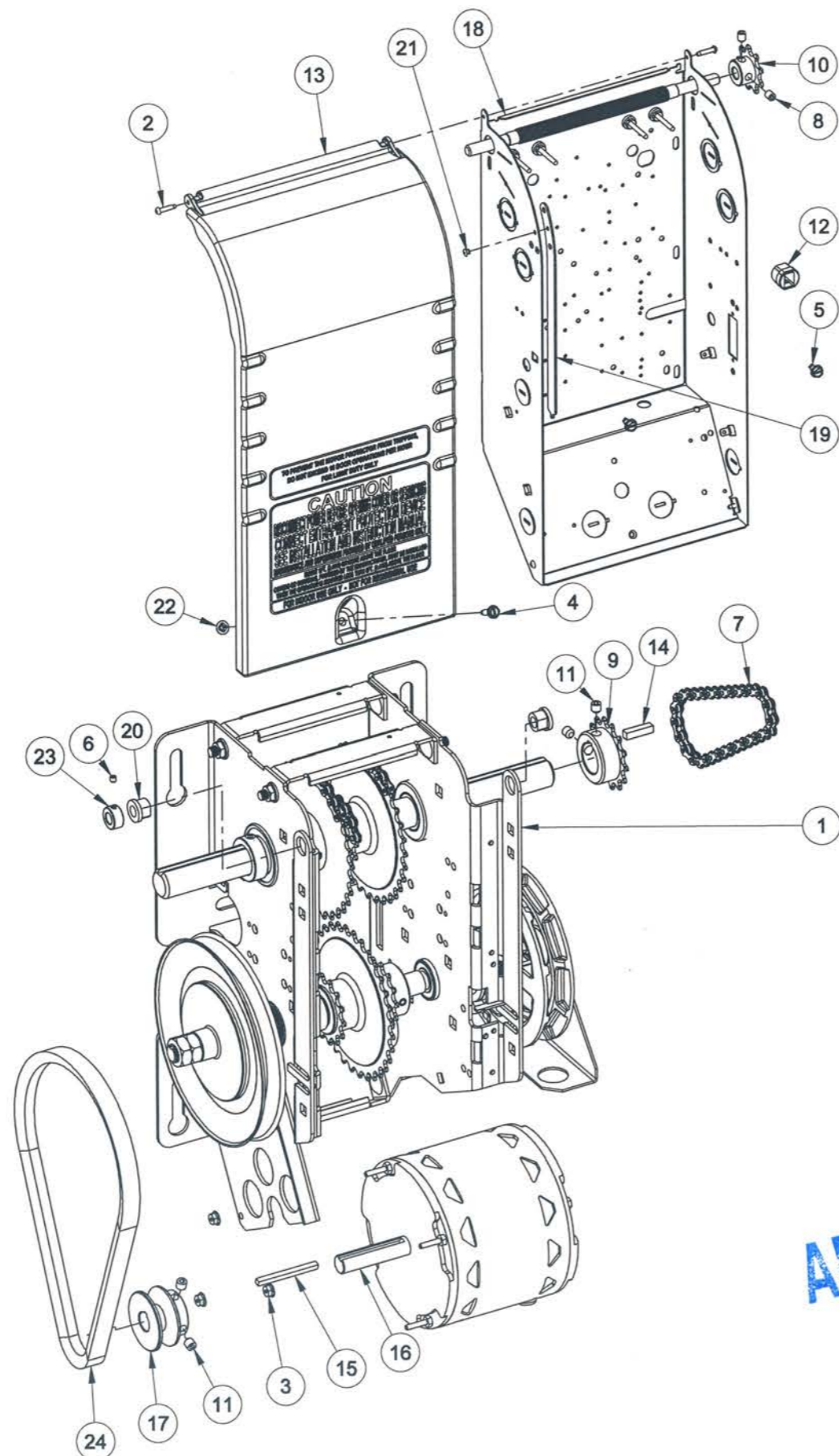
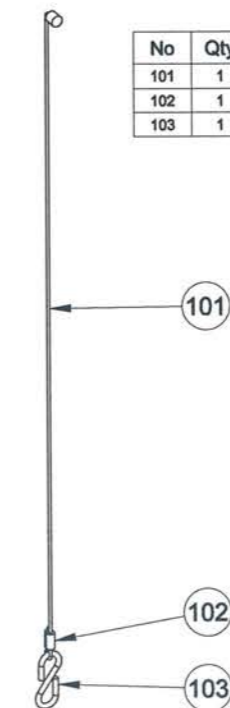


No	Qty	DESCRIPTION	# MANARAS	REV
1	1	SUB ASSY FRAME	FRAME	
2	2	6-32 X 5/8 TYPE F S-TAP. SCREW	SCREW095	
3	3	8-32 HEX SERRATED FLANG NUT ZP	NUT056	
4	1	10-24 X 3/4 TYPE F S-TAP. SCREW	SCREW023	
5	2	10-24 X 3/8 TYPE T S-TAP. SCREW	SCREW022	
6	1	10-32 X 3/16 SET SCREW	SET SCREW	
7	1	#410-1R32P(INCL.1C/L)	CHAIN006	
8	2	1/4-20 X 5/16 SET SCREW	SCREW001	
9	1	410B14 X 1 K1/4 2S5/16-18	SPR410B14X1	
10	1	410B9 X 3/8 K0 2S1/4-20	SPR410B9X3/8	
11	4	5/16-18 X 5/16 SET SCREW	SCREW003	
12	1	CABLE STRAIN RELIEF 5/8 OD	BUSHING058	
13	1	CBOX ABS/PC GREEN COVER MD	COVER053	10
14	1	KEY 1/4 X 1	KW021	5
15	1	KEY 3/16 X 2.25 (INCL. W/ MOTOR)	KEY	5
16	1	M.AOS 1/2HP 60HZ/115V OPD 48Y KWAY	MOTOR403	
17	1	MOTOR PULLEY 2.0 x 5/8 5L STL	PULLEY014	1
18	1	OPERA CONTROL BOX	CBOX040-041	
19	1	OPERA COVER ARM	ARM025	4
20	2	OPERA LIMIT SHAFT BUSHING	BUSHING055	1
21	1	POP RIVET 1/8 X (0.063-0.125)	RIVET008	
22	1	PUSH NUT #10	CLIP015	
23	1	STEEL COLLAR 0.3	COLLAR002	
24	1	TYPE B, INSIDE LENGTH 26	VBELTB26	



OMJ DISCONNECT

No	Qty	DESCRIPTION	# MANARAS	REV
101	1	7X7 1/16" X 16"	CABLE012	
102	1	CABLE SLEEVE 1/16"	SLEEVE001	
103	1	S HOOK	HOOK001	



OMH HARDWARE		
Qty	DESCRIPTION	# MANARAS
1	H. CHAIN FOR 14' DOOR SHAFT HEIGHT	J114
1	CHAIN KEEPER FOR HAND CHAIN	CHAINKEEPER001
1	HARDWARE BAG #1	HD1-HBAG

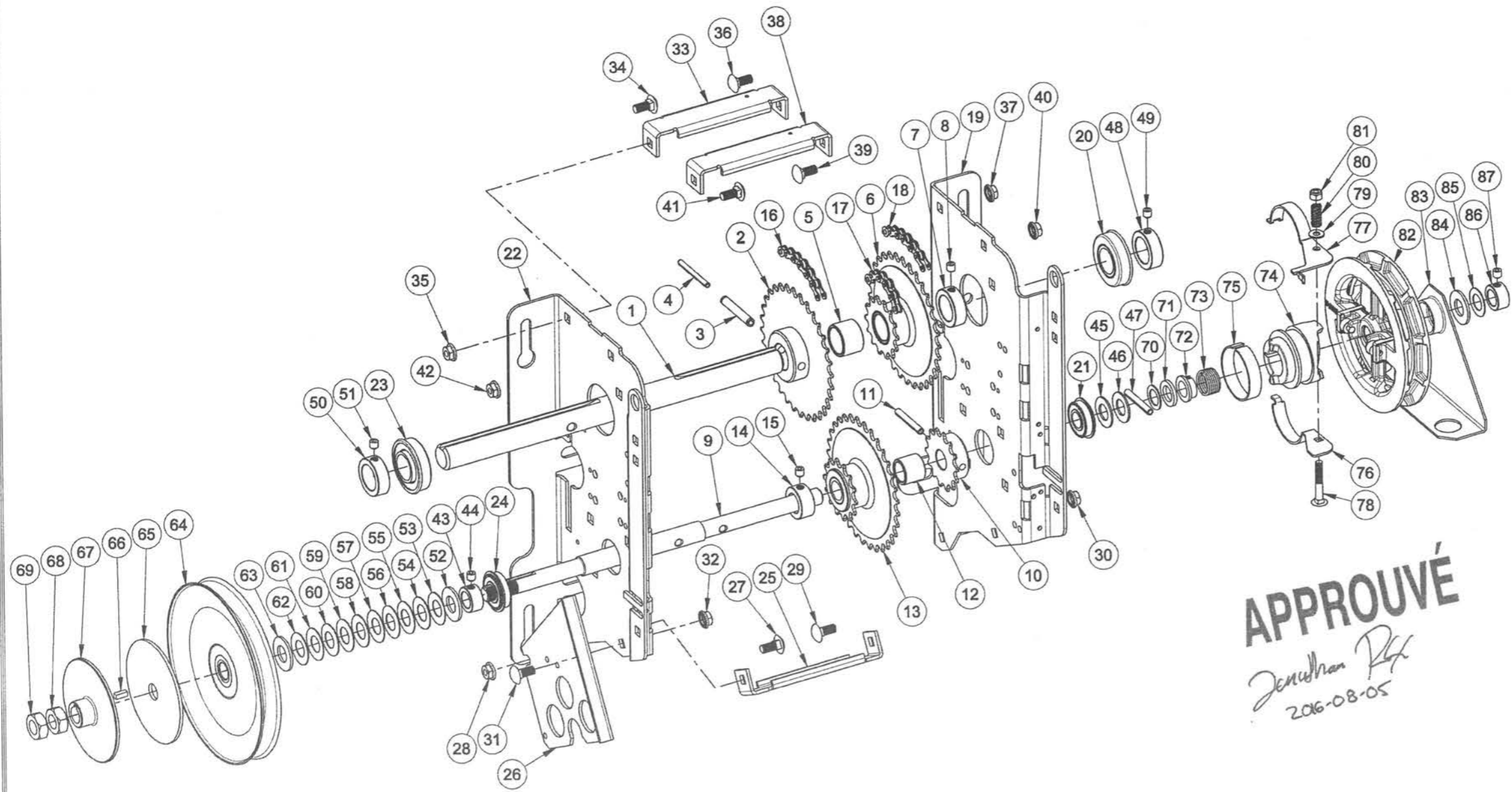
OMJ HARDWARE		
Qty	DESCRIPTION	# MANARAS
1	14' DISC. CHAIN KIT	CHANKIT001
1	CHAIN KEEPER FOR DISC. CHAIN	CHAINKEEPER002
1	DISCONNECT HANDLE	HANDLE007
1	HARDWARE BAG #1	HD1-HBAG

**APPROUVÉ**  
*Zora Han*  
 2016-10-06

PART DESCRIPTION		
PART NUMBER		<b>120V-1PH-1/2HP</b>
<b>OMH_OMJ</b>		MANARAS-OPERA 136 ONEIDA DRIVE POINTE-CLAIRE, QC, H9R 1A8
DRAWN BY: J. PROULX		TEL: 1-800-361-2260
DATE: 2013.09.13		FAX: 1-888-626-0606
UPDATED BY: O.BOTEZATU		
DATE: 2016.10.06		



**CONFIDENTIAL:** THIS DRAWING AND/OR THE INFORMATION CONTAINED HEREIN IS AND REMAINS THE SOLE PROPERTY OF, AND IS PROPRIETARY TO, MANARAS-OPERA. THIS DRAWING AND/OR INFORMATION SHALL BE KEPT CONFIDENTIAL AND MAY NOT BE REPRODUCED, COPIED, MODIFIED, DISCLOSED, TRANSFERRED, OR MADE AVAILABLE TO OTHERS, EXCEPT WITH THE EXPRESS CONSENT OF MANARAS-OPERA. IT IS LOANED IN CONFIDENCE FOR MUTUAL ASSISTANCE PURPOSES ONLY. MANARAS-OPERA MAY AT ANY TIME, WRITTEN MODIFY THE DRAWING AND/OR INFORMATION CONTAINED HEREIN.



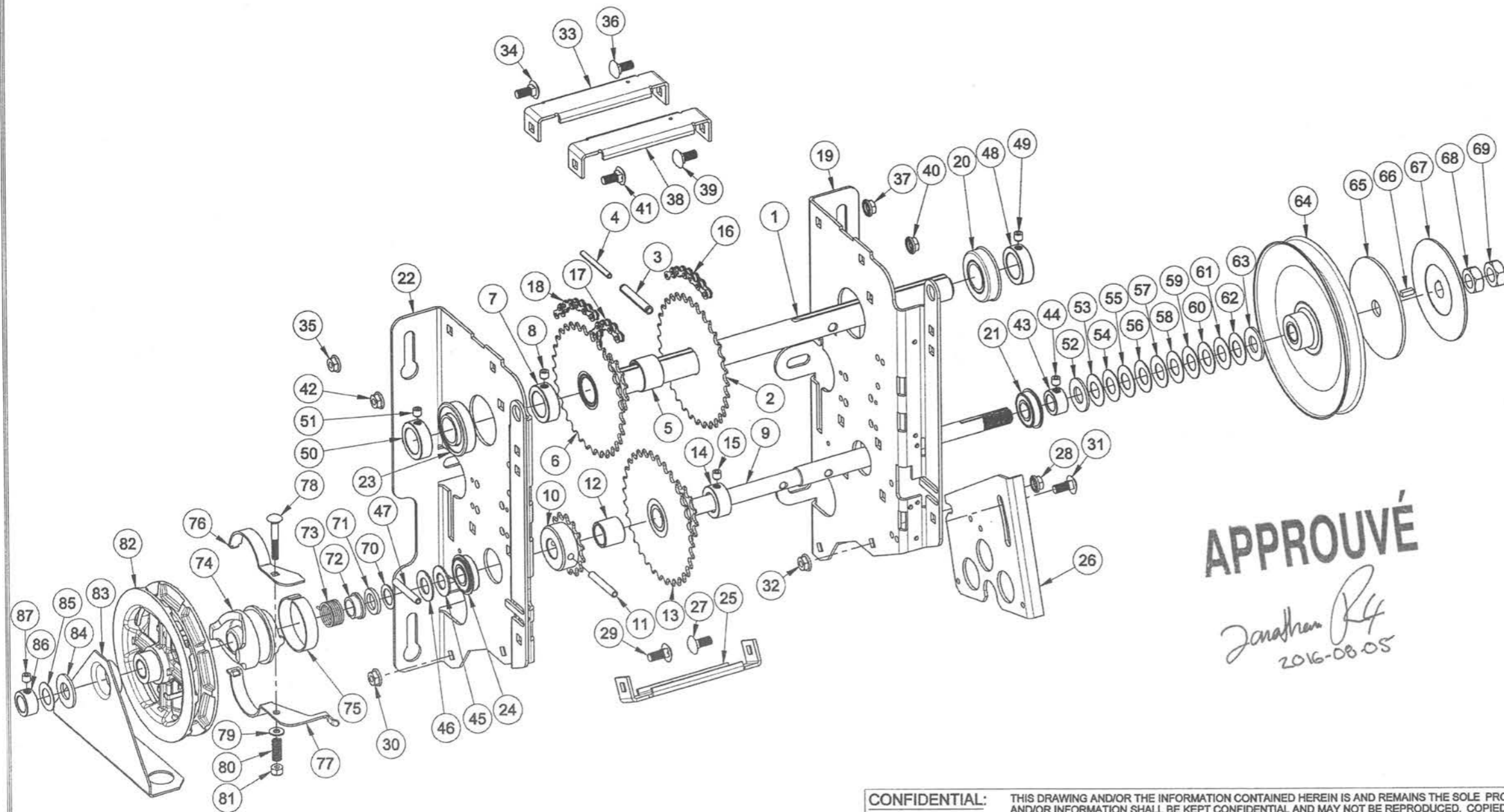
No	Qty	DESCRIPTION	# MANARAS	REV
71		OILLITE WASHER (.625X1.00X.125)	WASHER057	0
72		OPERA DISCONNECT SPRING BUSHING	BUSHING056	2
73		OPERA - DISCONNECT SPRING	SPRING040	3
74		SYNTHETIC DISCONNECT CAM OPERA	CAM017	0
75		OPERA DISCONNECT FRICTION BAND	SHOE011	
76		DISCONNECT SWITCH SHOE A	SHOE009	5
77		DISCONNECT SWITCH SHOE	SHOE010	2
78		1/4-20 X 1-3/4 RND HD SQ NECK BOLT	BOLT094	
79		TYPE A PLAIN WASHER 3/16 ZP	WASHER003	0
80		CAM GUIDE PLATE SPRING C260047	SPRING001	
81		1/4-20 HEX NYLON LOCK NUT ZP	NUT020	
82		PW ASSEMBLY (ROLLERS AND CLIPS)	POCKETWHEEL007	
83		CHAIN GUIDE OPERA	GUIDE014	3
84		TYPE A PLAIN WASHER 5/8 N ZP	WASHER014	0
85		FDGHE FW 5/8ID X 11/8 TRA1018	BEARING024	
86		COLLAR 5/8"	COLLAR004	
87		5/16-18 X 5/16 SET SCREW	SCREW003	

No	Qty	DESCRIPTION	# MANARAS	REV
1		OPERA OUTPUT SHAFT	SHAFT102	5
2		410B32 X 1 K0 0S PH5/16	SPR410B32X1	3
3		PIN SLOTTED SPRING 5/16 X 2	PIN021	
4		PIN SLOTTED SPRING 4.5X50MM HD	PIN028	
5		OPERA SPACER 1"	SPACER009	1
6		410B14A32 X 1 K0 0S	SPR410B14A32X1	
7		COLLAR 1"	COLLAR007	
8		5/16-18 X 5/16 SET SCREW	SCREW003	
9		INPUT SHAFT OPERA-H	SHAFT104	10
10		410B14 X 3/4 K0 0S PH1/4	SPR410B14X3/4	3
11		PIN SLOTTED SPRING 1/4 X 1-3/4	PIN020	
12		OPERA SPACER 3/4"	SPACER008	1
13		410B14A32 X 3/4 K0 0S	SPR00003	
14		COLLAR 3/4"	COLLAR005	
15		5/16-18 X 5/16 SET SCREW	SCREW003	
16		#410-1R48P(INCL.1CL)	CHAIN058	
17		#410-1R48P(INCL.1CL)	CHAIN058	
18		#410-1R48P(INCL.1CL)	CHAIN058	
19		RIGHT HAND SIDE FOR OPERA	FRAME037	24
20		FLANGE BEARING 1" C16-3F*5	BEARING007	
21		FLANGED BEARING 5/8	BEARING006	
22		LEFT HAND SIDE FOR OPERA	FRAME038	24
23		FLANGE BEARING 1" C16-3F*5	BEARING007	
24		FLANGED BEARING 5/8	BEARING006	
25		OPERA MD FRAME SPACER	SPACER012	3
26		LEFT MD MOTOR PLATE	PLATE080	3
27		5/16-18 X 3/4 RND HD SQ NECK BOLT	BOLT093	
28		5/16-18 HEX SERRATED FLANG NUT ZP	NUT055	
29		5/16-18 X 3/4 RND HD SQ NECK BOLT	BOLT093	
30		5/16-18 HEX SERRATED FLANG NUT ZP	NUT055	
31		5/16-18 X 3/4 RND HD SQ NECK BOLT	BOLT093	
32		5/16-18 HEX SERRATED FLANG NUT ZP	NUT055	
33		OPERA MD FRAME SPACER	SPACER012	3
34		5/16-18 X 3/4 RND HD SQ NECK BOLT	BOLT093	
35		5/16-18 HEX SERRATED FLANG NUT ZP	NUT055	
36		5/16-18 X 3/4 RND HD SQ NECK BOLT	BOLT093	
37		5/16-18 HEX SERRATED FLANG NUT ZP	NUT055	
38		OPERA MD FRAME SPACER	SPACER012	3
39		5/16-18 X 3/4 RND HD SQ NECK BOLT	BOLT093	
40		5/16-18 HEX SERRATED FLANG NUT ZP	NUT055	
41		5/16-18 X 3/4 RND HD SQ NECK BOLT	BOLT093	
42		5/16-18 HEX SERRATED FLANG NUT ZP	NUT055	
43		COLLAR 5/8"	COLLAR004	
44		5/16-18 X 5/16 SET SCREW	SCREW003	
45		FLT WASHER 5/8 (.640X1.18X.065) ZP	WASHER043	0
46		FLT WASHER 5/8 (.640X1.18X.065) ZP	WASHER043	0
47		PIN SLOTTED SPRING 1/4 X 1-3/4	PIN020	
48		COLLAR 1"	COLLAR007	
49		5/16-18 X 5/16 SET SCREW	SCREW003	
50		COLLAR 1"	COLLAR007	
51		5/16-18 X 5/16 SET SCREW	SCREW003	
52		TYPE A PLAIN WASHER 5/8 N ZP	WASHER014	0
53		BELLEVILLE WASHER (31.5X16.3X0.8)	WASHER035	
54		BELLEVILLE WASHER (31.5X16.3X0.8)	WASHER035	
55		BELLEVILLE WASHER (31.5X16.3X0.8)	WASHER035	
56		BELLEVILLE WASHER (31.5X16.3X0.8)	WASHER035	
57		BELLEVILLE WASHER (31.5X16.3X0.8)	WASHER035	
58		BELLEVILLE WASHER (31.5X16.3X0.8)	WASHER035	
59		BELLEVILLE WASHER (31.5X16.3X0.8)	WASHER035	
60		BELLEVILLE WASHER (31.5X16.3X0.8)	WASHER035	
61		BELLEVILLE WASHER (31.5X16.3X0.8)	WASHER035	
62		BELLEVILLE WASHER (31.5X16.3X0.8)	WASHER035	
63		TYPE A PLAIN WASHER 5/8 N ZP	WASHER014	0
64		PULLEY 7" x 5/8" 6L/B	PULLEY020	5
65		CL.PAD 5/8x4x0.125"	CLUTCHPAD005	3
66		KEY 3/16 X 1/2	KW031	5
67		OPERA CLUTCHPLATE	CLUTCHPLATE006	3
68		5/8-18 HEX JAM NUT ZP	NUT013	
69		5/8-18 HEX JAM NUT ZP	NUT013	
70		FLT WASHER 5/8 (.630X.955X.047) ZP	WASHER018	0

**APPROUVÉ**  
*Jenulhan R*  
 2016-08-05

PART DESCRIPTION	
<b>SUB ASSY FRAME OMH RIGHT HAND</b>	
PART NUMBER	OMHFRAMEHR
DRAWN BY:	J. PROULX
DATE:	2012-04-12
UPDATED BY:	O.BOTEZATU
DATE:	2016.08.02
MANARAS-OPERA	136 ONEIDA DRIVE POINTE-CLAIRE, QC, H9R 1A8 TEL: 1-800-361-2260 FAX: 1-888-626-0605
	
SHEET: 1 of 1	

**CONFIDENTIAL:** THIS DRAWING AND/OR THE INFORMATION CONTAINED HEREIN IS AND REMAINS THE SOLE PROPERTY OF, AND IS PROPRIETARY TO, MANARAS-OPERA. THIS DRAWING AND/OR INFORMATION SHALL BE KEPT CONFIDENTIAL AND MAY NOT BE REPRODUCED, COPIED, MODIFIED, DISCLOSED, TRANSFERRED, OR MADE AVAILABLE TO OTHERS, EXCEPT WITH THE EXPRESS CONSENT OF MANARAS-OPERA. IT IS LOANED IN CONFIDENCE FOR MUTUAL ASSISTANCE PURPOSES ONLY. MANARAS-OPERA MAY AT ANY TIME, WRITTEN MODIFY THE DRAWING AND/OR INFORMATION CONTAINED HEREIN.



No	Qty	DESCRIPTION	# MANARAS	REV
71		OILLITE WASHER (.625X1.00X.125)	WASHER057	0
72		OPERA DISCONNECT SPRING BUSHING	BUSHING056	2
73		OPERA - DISCONNECT SPRING	SPRING040	3
74		SYNTHETIC DISCONNECT CAM OPERA	CAM017	0
75		OPERA DISCONNECT FRICTION BAND	SHOE011	4
76		DISCONNECT SWITCH SHOE A	SHOE008	5
77		DISCONNECT SWITCH SHOE	SHOE010	2
78		1/4-20 X 1-3/4 RND HD SQ NECK BOLT	BOLT094	7
79		TYPE A PLAIN WASHER 3/16 ZP	WASHER003	0
80		CAM GUIDE PLATE SPRING C260047	SPRING001	
81		1/4-20 HEX NYLON LOCK NUT ZP	NUT020	
82		PW ASSEMBLY (ROLLERS AND CLIPS)	POCKETWHEEL007	
83		CHAIN GUIDE OPERA	GUIDE014	3
84		TYPE A PLAIN WASHER 5/8 N ZP	WASHER014	0
85		FDGHE FW 5/8ID X 11/8 TRA1018	BEARING024	
86		COLLAR 5/8"	COLLAR004	
87		5/16-18 X 5/16 SET SCREW	SCREW003	
1		OPERA OUTPUT SHAFT	SHAFT102	5
2		410B32 X 1 K0 0S PH5/16	SPR410B32X1	3
3		PIN SLOTTED SPRING 5/16 X 2	PIN021	
4		PIN SLOTTED SPRING 4.5X50MM HD	PIN028	
5		OPERA SPACER 1"	SPACER009	1
6		410B14A32 X 1 K0 0S	SPR410B14A32X1	
7		COLLAR 1"	COLLAR007	
8		5/16-18 X 5/16 SET SCREW	SCREW003	
9		INPUT SHAFT OPERA-H	SHAFT104	10
10		410B14 X 3/4 K0 0S PH1/4	SPR410B14X3/4	3
11		PIN SLOTTED SPRING 1/4 X 1-3/4	PIN020	
12		OPERA SPACER 3/4"	SPACER008	1
13		410B14A32 X 3/4 K0 0S	SPR0003	
14		COLLAR 3/4"	COLLAR005	
15		5/16-18 X 5/16 SET SCREW	SCREW003	
16		#410-1R48P(INCL.1CL)	CHAIN058	
17		#410-1R48P(INCL.1CL)	CHAIN058	
18		#410-1R48P(INCL.1CL)	CHAIN058	
19		RIGHT HAND SIDE FOR OPERA	FRAME037	24
20		FLANGE BEARING 1" C16-3F*5	BEARING007	
21		FLANGED BEARING 5/8	BEARING006	
22		LEFT HAND SIDE FOR OPERA	FRAME038	24
23		FLANGE BEARING 1" C16-3F*5	BEARING007	
24		FLANGED BEARING 5/8	BEARING006	
25		OPERA MD FRAME SPACER	SPACER012	3
26		RIGHT MD MOTOR PLATE	PLATE081	5
27		5/16-18 X 3/4 RND HD SQ NECK BOLT	BOLT093	
28		5/16-18 HEX SERRATED FLANG NUT ZP	NUT055	
29		5/16-18 X 3/4 RND HD SQ NECK BOLT	BOLT093	
30		5/16-18 HEX SERRATED FLANG NUT ZP	NUT055	
31		5/16-18 X 3/4 RND HD SQ NECK BOLT	BOLT093	
32		5/16-18 HEX SERRATED FLANG NUT ZP	NUT055	
33		OPERA MD FRAME SPACER	SPACER012	3
34		5/16-18 X 3/4 RND HD SQ NECK BOLT	BOLT093	
35		5/16-18 HEX SERRATED FLANG NUT ZP	NUT055	
36		5/16-18 X 3/4 RND HD SQ NECK BOLT	BOLT093	
37		5/16-18 HEX SERRATED FLANG NUT ZP	NUT055	
38		OPERA MD FRAME SPACER	SPACER012	3
39		5/16-18 X 3/4 RND HD SQ NECK BOLT	BOLT093	
40		5/16-18 HEX SERRATED FLANG NUT ZP	NUT055	
41		5/16-18 X 3/4 RND HD SQ NECK BOLT	BOLT093	
42		5/16-18 HEX SERRATED FLANG NUT ZP	NUT055	
43		COLLAR 5/8"	COLLAR004	
44		5/16-18 X 5/16 SET SCREW	SCREW003	
45		FLT WASHER 5/8 (.640X1.18X.065) ZP	WASHER043	0
46		FLT WASHER 5/8 (.640X1.18X.065) ZP	WASHER043	0
47		PIN SLOTTED SPRING 1/4 X 1-3/4	PIN020	
48		COLLAR 1"	COLLAR007	
49		5/16-18 X 5/16 SET SCREW	SCREW003	
50		COLLAR 1"	COLLAR007	
51		5/16-18 X 5/16 SET SCREW	SCREW003	
52		TYPE A PLAIN WASHER 5/8 N ZP	WASHER014	0
53		BELLEVILLE WASHER (31.5X16.3X0.8)	WASHER035	
54		BELLEVILLE WASHER (31.5X16.3X0.8)	WASHER035	
55		BELLEVILLE WASHER (31.5X16.3X0.8)	WASHER035	
56		BELLEVILLE WASHER (31.5X16.3X0.8)	WASHER035	
57		BELLEVILLE WASHER (31.5X16.3X0.8)	WASHER035	
58		BELLEVILLE WASHER (31.5X16.3X0.8)	WASHER035	
59		BELLEVILLE WASHER (31.5X16.3X0.8)	WASHER035	
60		BELLEVILLE WASHER (31.5X16.3X0.8)	WASHER035	
61		BELLEVILLE WASHER (31.5X16.3X0.8)	WASHER035	
62		BELLEVILLE WASHER (31.5X16.3X0.8)	WASHER035	
63		TYPE A PLAIN WASHER 5/8 N ZP	WASHER014	0
64		PULLEY 7" x 5/8" 5LB	PULLEY020	5
65		CL.PAD 5/8x4x0.125"	CLUTCHPAD005	3
66		KEY 3/16 X 1/2	KW031	5
67		OPERA CLUTCHPLATE	CLUTCHPLATE006	3
68		5/8-18 HEX JAM NUT ZP	NUT013	
69		5/8-18 HEX JAM NUT ZP	NUT013	
70		FLT WASHER 5/8 (.630X.955X.047) ZP	WASHER018	0

**APPROUVÉ**

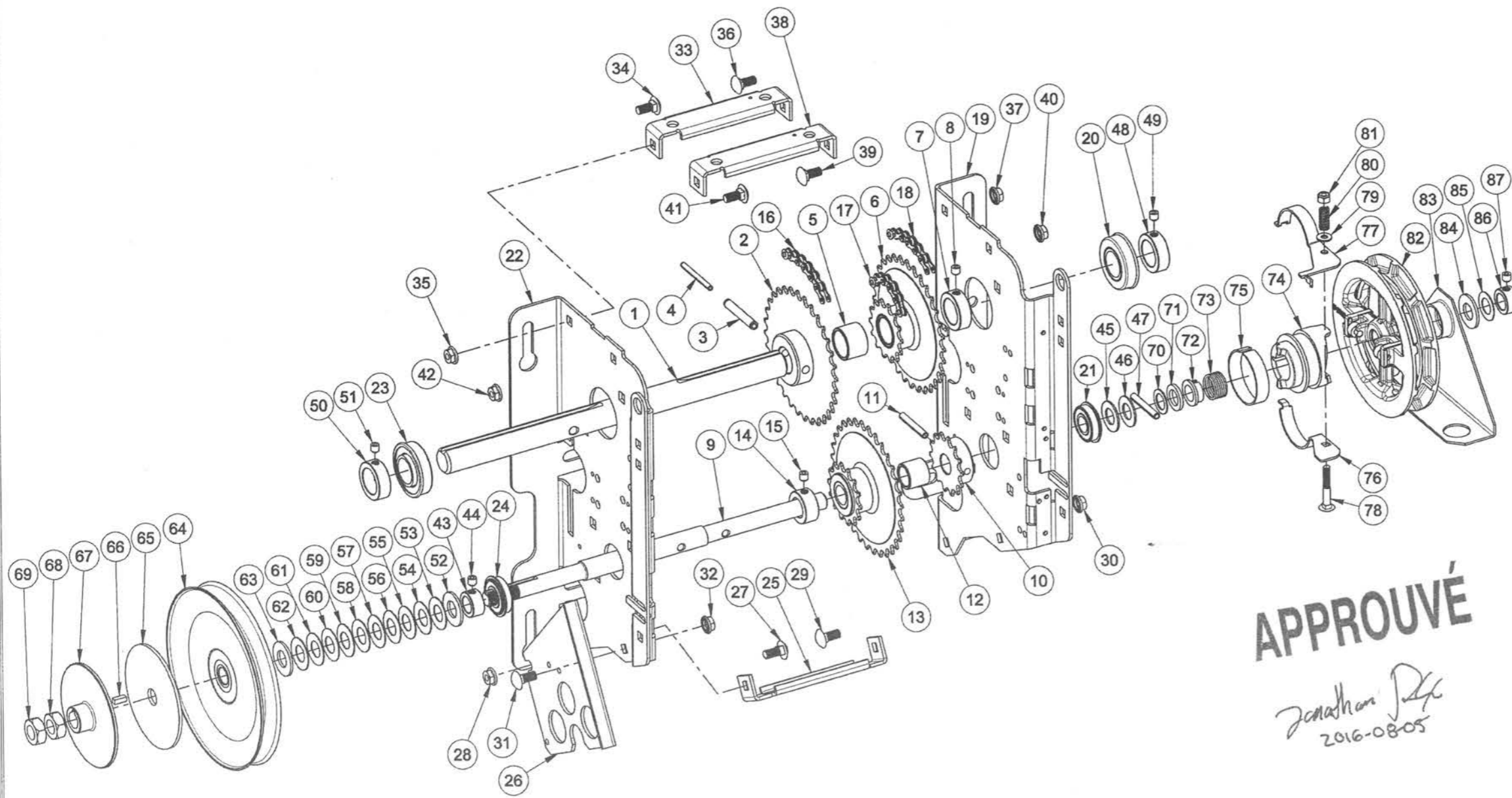
*Jonathan R4*  
2016-08-05

PART DESCRIPTION  
**SUB ASSY FRAME OMH LEFT HAND**

PART NUMBER	MANARAS-OPERA 136 ONEIDA DRIVE POINTE-CLAIRE, QC, H9R 1A8
DRAWN BY: J. PROULX	TEL: 1-800-361-2260
DATE: 2012-04-09	FAX: 1-888-626-0606
UPDATED BY: O.BOTEZATU	
DATE: 2016-08-02	

SHEET: 1 of 1

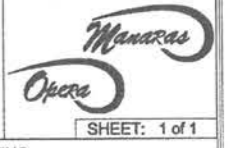
**CONFIDENTIAL:** THIS DRAWING AND/OR THE INFORMATION CONTAINED HEREIN IS AND REMAINS THE SOLE PROPERTY OF, AND IS PROPRIETARY TO, MANARAS-OPERA. THIS DRAWING AND/OR INFORMATION SHALL BE KEPT CONFIDENTIAL AND MAY NOT BE REPRODUCED, COPIED, MODIFIED, DISCLOSED, TRANSFERRED, OR MADE AVAILABLE TO OTHERS, EXCEPT WITH THE EXPRESS CONSENT OF MANARAS-OPERA. IT IS LOANED IN CONFIDENCE FOR MUTUAL ASSISTANCE PURPOSES ONLY. MANARAS-OPERA MAY AT ANY TIME, WRITTEN MODIFY THE DRAWING AND/OR INFORMATION CONTAINED HEREIN.



71	OILLITE WASHER (.625X1.00X.125)	WASHER057	0	No	Qty	DESCRIPTION	# MANARAS	REV
72	OPERA DISCONNECT SPRING BUSHING	BUSHING056	2	1		OPERA OUTPUT SHAFT	SHAFT102	5
73	OPERA - DISCONNECT SPRING	SPRING040	3	2		410B32 X 1 K0 0S PH5/16	SPR410B32X1	3
74	SYNTHETIC DISCONNECT CAM OPERA	CAM017	0	3		PIN SLOTTED SPRING 5/16 X 2	PIN021	
75	OPERA DISCONNECT FRICTION BAND	SHOE011		4		PIN SLOTTED SPRING 4.5X50MM HD	PIN028	
76	DISCONNECT SWITCH SHOE A	SHOE009	5	5		OPERA SPACER 1"	SPACER009	1
77	DISCONNECT SWITCH SHOE	SHOE010	2	6		410B14A32 X 1 K0 0S	SPR410B14A32X1	
78	1/4-20 X 1-3/4 RND HD SQ NECK BOLT	BOLT094		7		COLLAR 1"	COLLAR007	
79	TYPE A PLAIN WASHER 3/16 ZP	WASHER003	0	8		5/16-18 X 5/16 SET SCREW	SCREW003	
80	CAM GUIDE PLATE SPRING C280047	SPRING001		9		INPUT SHAFT OPERA-H	SHAFT104	10
81	1/4-20 HEX NYLON LOCK NUT ZP	NUT020		10		410B14 X 3/4 K0 0S PH1/4	SPR410B14X3/4	3
82	PW ASSEMBLY (ROLLERS AND CLIPS)	POCKETWHEEL007		11		PIN SLOTTED SPRING 1/4 X 1-3/4	PIN020	
83	CHAIN GUIDE OPERA	GUIDE014	3	12		OPERA SPACER 3/4"	SPACER008	1
84	TYPE A PLAIN WASHER 5/8 N ZP	WASHER014	0	13		410B14A32 X 3/4 K0 0S	SPR00003	
85	FDGHE FW 5/8ID X 11/8 TRA1018	BEARING024		14		COLLAR 3/4"	COLLAR005	
86	COLLAR 5/8"	COLLAR004		15		5/16-18 X 5/16 SET SCREW	SCREW003	
87	5/16-18 X 5/16 SET SCREW	SCREW003		16		#410-1R48P(INCL.1CL)	CHAIN058	
				17		#410-1R48P(INCL.1CL)	CHAIN058	
				18		#410-1R48P(INCL.1CL)	CHAIN058	
				19		RIGHT HAND SIDE FOR OPERA BLACK	FRAME051	24
				20		FLANGE BEARING 1" C16-3F*5	BEARING007	
				21		FLANGED BEARING 5/8	BEARING006	
				22		LEFT HAND SIDE FOR OPERA BLACK	FRAME052	24
				23		FLANGE BEARING 1" C16-3F*5	BEARING007	
				24		FLANGED BEARING 5/8	BEARING006	
				25		OPERA MD FRAME SPACER ZP	SPACER024	3
				28		LEFT MD MOTOR PLATE	PLATE080	3
				27		5/16-18 X 3/4 RND HD SQ NECK BOLT	BOLT093	
				28		5/16-18 HEX SERRATED FLANG NUT ZP	NUT055	
				29		5/16-18 X 3/4 RND HD SQ NECK BOLT	BOLT093	
				30		5/16-18 HEX SERRATED FLANG NUT ZP	NUT055	
				31		5/16-18 X 3/4 RND HD SQ NECK BOLT	BOLT093	
				32		5/16-18 HEX SERRATED FLANG NUT ZP	NUT055	
				33		OPERA MD FRAME SPACER ZP	SPACER024	3
				34		5/16-18 X 3/4 RND HD SQ NECK BOLT	BOLT093	
				35		5/16-18 HEX SERRATED FLANG NUT ZP	NUT055	
				36		5/16-18 X 3/4 RND HD SQ NECK BOLT	BOLT093	
				37		5/16-18 HEX SERRATED FLANG NUT ZP	NUT055	
				38		OPERA MD FRAME SPACER ZP	SPACER024	3
				39		5/16-18 X 3/4 RND HD SQ NECK BOLT	BOLT093	
				40		5/16-18 HEX SERRATED FLANG NUT ZP	NUT055	
				41		5/16-18 X 3/4 RND HD SQ NECK BOLT	BOLT093	
				42		5/16-18 HEX SERRATED FLANG NUT ZP	NUT055	
				43		COLLAR 5/8"	COLLAR004	
				44		5/16-18 X 5/16 SET SCREW	SCREW003	
				45		FLT WASHER 5/8 (.640X1.18X.065) ZP	WASHER043	0
				46		FLT WASHER 5/8 (.640X1.18X.065) ZP	WASHER043	0
				47		PIN SLOTTED SPRING 1/4 X 1-3/4	PIN020	
				48		COLLAR 1"	COLLAR007	
				49		5/16-18 X 5/16 SET SCREW	SCREW003	
				50		COLLAR 1"	COLLAR007	
				51		5/16-18 X 5/16 SET SCREW	SCREW003	
				52		TYPE A PLAIN WASHER 5/8 N ZP	WASHER014	0
				53		BELLEVILLE WASHER (31.5X16.3X0.8)	WASHER035	
				54		BELLEVILLE WASHER (31.5X16.3X0.8)	WASHER035	
				55		BELLEVILLE WASHER (31.5X16.3X0.8)	WASHER035	
				56		BELLEVILLE WASHER (31.5X16.3X0.8)	WASHER035	
				57		BELLEVILLE WASHER (31.5X16.3X0.8)	WASHER035	
				58		BELLEVILLE WASHER (31.5X16.3X0.8)	WASHER035	
				59		BELLEVILLE WASHER (31.5X16.3X0.8)	WASHER035	
				60		BELLEVILLE WASHER (31.5X16.3X0.8)	WASHER035	
				61		BELLEVILLE WASHER (31.5X16.3X0.8)	WASHER035	
				62		BELLEVILLE WASHER (31.5X16.3X0.8)	WASHER035	
				63		TYPE A PLAIN WASHER 5/8 N ZP	WASHER014	0
				64		PULLEY 7" x 5/8" 5LB	PULLEY020	5
				65		CL.PAD 5/8x4x0.125"	CLUTCHPAD005	3
				66		KEY 3/16 X 1/2	KW031	5
				67		OPERA CLUTCHPLATE	CLUTCHPLATE006	3
				68		5/8-18 HEX JAM NUT ZP	NUT013	
				69		5/8-18 HEX JAM NUT ZP	NUT013	
				70		FLT WASHER 5/8 (.630X.955X.047) ZP	WASHER018	0

**APPROUVÉ**  
*Jonathan D...*  
 2016-08-05

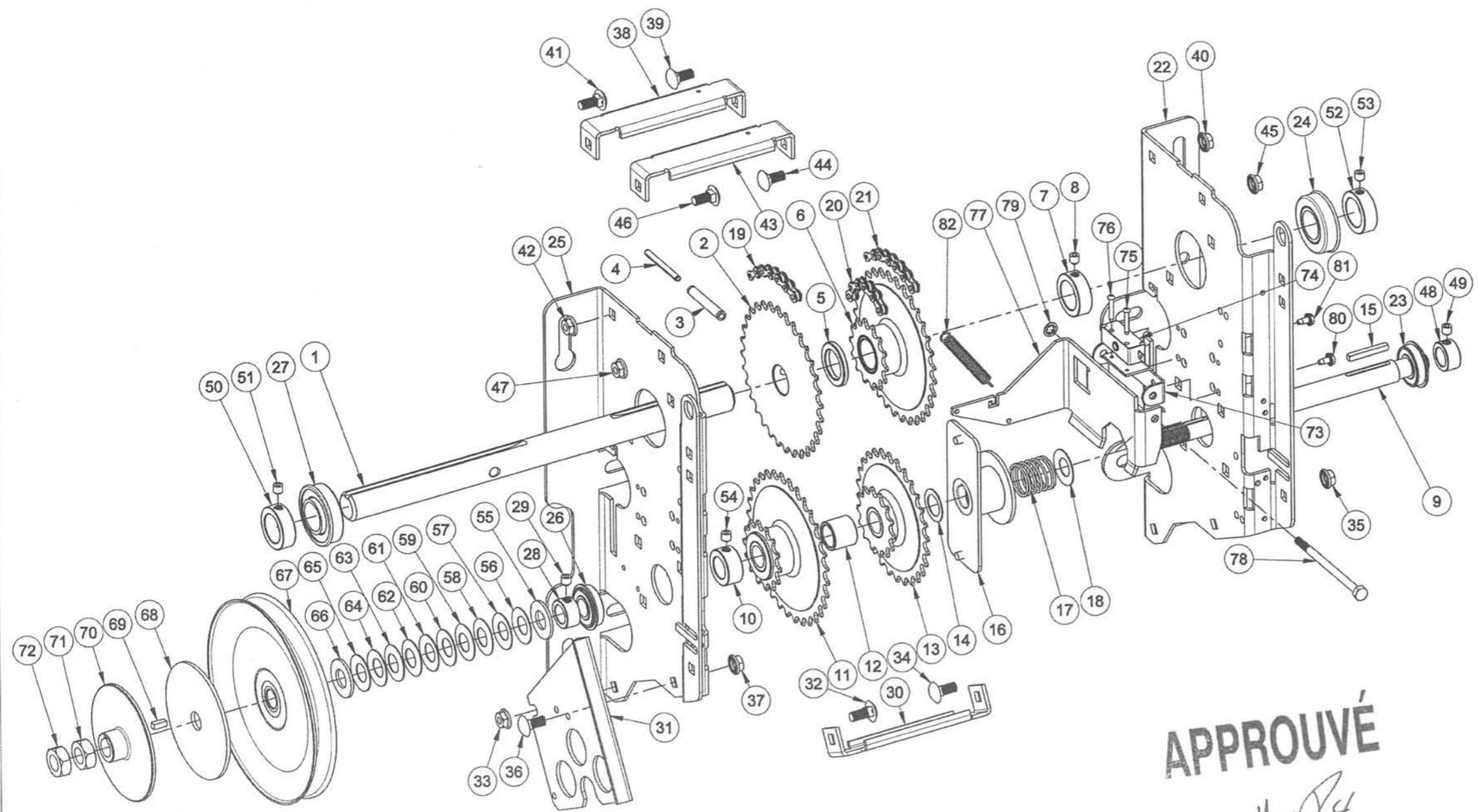
PART DESCRIPTION		
<b>SUB ASSY FRAME OMH RIGHT HAND BK</b>		
PART NUMBER	MANARAS-OPERA	
OMHBKFRAMEHR	136 ONEIDA DRIVE	
DRAWN BY: J. PROULX	POINTE-CLAIRE, QC, H9R 1A8	
DATE: 2012-04-16	TEL: 1-800-361-2260	
UPDATED BY: J. PROULX	FAX: 1-888-626-0806	
DATE: 2015-11-25		



**CONFIDENTIAL:** THIS DRAWING AND/OR THE INFORMATION CONTAINED HEREIN IS AND REMAINS THE SOLE PROPERTY OF, AND IS PROPRIETARY TO, MANARAS-OPERA. THIS DRAWING AND/OR INFORMATION SHALL BE KEPT CONFIDENTIAL AND MAY NOT BE REPRODUCED, COPIED, MODIFIED, DISCLOSED, TRANSFERRED, OR MADE AVAILABLE TO OTHERS, EXCEPT WITH THE EXPRESS CONSENT OF MANARAS-OPERA. IT IS LOANED IN CONFIDENCE FOR MUTUAL ASSISTANCE PURPOSES ONLY. MANARAS-OPERA MAY AT ANY TIME, WRITTEN MODIFY THE DRAWING AND/OR INFORMATION CONTAINED HEREIN.

71	5/8-18 HEX JAM NUT ZP	NUT013	
72	5/8-18 HEX JAM NUT ZP	NUT013	
73	FORK / SWITCH SUPPORT	BRACKET192	1
74	STD SINGLE CUT-OFF SWITCH	LIMIT020	
75	6-32 X 7/8 TYPE F S-TAP. SCREW	SCREW096	
76	6-32 X 7/8 TYPE F S-TAP. SCREW	SCREW096	
77	DISCONNECT FORK RH	FORK001	6
78	1/4-20 X 4 HEX BOLT	BOLT016	
79	PUSH NUT 1/4"	CLIP029	
80	10-24 X 3/8 TYPE T S-TAP. SCREW	SCREW022	
81	10-24 X 3/8 TYPE T S-TAP. SCREW	SCREW022	
82	EXT. SPRING 3/8 OD	SPRING042	

No	Qty	DESCRIPTION	# MANARAS	REV
1		OPERA OUTPUT SHAFT	SHAFT102	5
2		410B32 X 1 K0 0S PH5/16	SPR410B32X1	3
3		PIN SLOTTED SPRING 5/16 X 2	PIN021	
4		PIN SLOTTED SPRING 4.5X50MM HD	PIN028	
5		OPERA-MJ SPACER 3/16 X 1"	SPACER013	
6		410B14A32 X 1 K0 0S	SPR410B14A32X1	
7		COLLAR 1"	COLLAR007	
8		5/16-18 X 5/16 SET SCREW	SCREW003	
9		INPUT SHAFT OPJ	SHAFT107	2
10		COLLAR 3/4"	COLLAR005	
11		410B14A32 X 3/4 K0 0S	SPR0003	
12		OPERA SPACER 3/4"	SPACER008	1
13		410B14A28 X 3/4 K0 0S	SPR410B14A28X3/4	
14		SHIM WASHER (.750X1.125X.031) ZP	WASHER058	0
15		KEY 3/16 X 1-1/2 ROUNDED ENDS	KW013	5
16		COUPLING 3/4 2 PINS 1/4	COUPLING014	3
17		COMP. SPRING 1"ID 2"L	SPRING041	
18		BELLEVILLE WASHER (31.5X16.3X0.8)	WASHER035	
19		#410-1R48P(INCL.1C/L)	CHAIN058	
20		#410-1R48P(INCL.1C/L)	CHAIN058	
21		#410-1R48P(INCL.1C/L)	CHAIN058	
22		RIGHT HAND SIDE FOR OPERA	FRAME037	24
23		FLANGED BEARING 5/8	BEARING006	
24		FLANGE BEARING 1" C16-3F*5	BEARING007	
25		LEFT HAND SIDE FOR OPERA	FRAME038	24
26		FLANGED BEARING 5/8	BEARING006	
27		FLANGE BEARING 1" C16-3F*5	BEARING007	
28		COLLAR 5/8"	COLLAR004	
29		5/16-18 X 5/16 SET SCREW	SCREW003	
30		OPERA MD FRAME SPACER	SPACER012	3
31		LEFT MD MOTOR PLATE	PLATE080	3
32		5/16-18 X 3/4 RND HD SQ NECK BOLT	BOLT093	
33		5/16-18 HEX SERRATED FLANG NUT ZP	NUT055	
34		5/16-18 X 3/4 RND HD SQ NECK BOLT	BOLT093	
35		5/16-18 HEX SERRATED FLANG NUT ZP	NUT055	
36		5/16-18 X 3/4 RND HD SQ NECK BOLT	BOLT093	
37		5/16-18 HEX SERRATED FLANG NUT ZP	NUT055	
38		OPERA MD FRAME SPACER	SPACER012	3
39		5/16-18 X 3/4 RND HD SQ NECK BOLT	BOLT093	
40		5/16-18 HEX SERRATED FLANG NUT ZP	NUT055	
41		5/16-18 X 3/4 RND HD SQ NECK BOLT	BOLT093	
42		5/16-18 HEX SERRATED FLANG NUT ZP	NUT055	
43		OPERA MD FRAME SPACER	SPACER012	3
44		5/16-18 X 3/4 RND HD SQ NECK BOLT	BOLT093	
45		5/16-18 HEX SERRATED FLANG NUT ZP	NUT055	
46		5/16-18 X 3/4 RND HD SQ NECK BOLT	BOLT093	
47		5/16-18 HEX SERRATED FLANG NUT ZP	NUT055	
48		COLLAR 5/8"	COLLAR004	
49		5/16-18 X 5/16 SET SCREW	SCREW003	
50		COLLAR 1"	COLLAR007	
51		5/16-18 X 5/16 SET SCREW	SCREW003	
52		COLLAR 1"	COLLAR007	
53		5/16-18 X 5/16 SET SCREW	SCREW003	
54		5/16-18 X 5/16 SET SCREW	SCREW003	
55		TYPE A PLAIN WASHER 5/8 N ZP	WASHER014	0
56		BELLEVILLE WASHER (31.5X16.3X0.8)	WASHER035	
57		BELLEVILLE WASHER (31.5X16.3X0.8)	WASHER035	
58		BELLEVILLE WASHER (31.5X16.3X0.8)	WASHER035	
59		BELLEVILLE WASHER (31.5X16.3X0.8)	WASHER035	
60		BELLEVILLE WASHER (31.5X16.3X0.8)	WASHER035	
61		BELLEVILLE WASHER (31.5X16.3X0.8)	WASHER035	
62		BELLEVILLE WASHER (31.5X16.3X0.8)	WASHER035	
63		BELLEVILLE WASHER (31.5X16.3X0.8)	WASHER035	
64		BELLEVILLE WASHER (31.5X16.3X0.8)	WASHER035	
65		BELLEVILLE WASHER (31.5X16.3X0.8)	WASHER035	
66		TYPE A PLAIN WASHER 5/8 N ZP	WASHER014	0
67		PULLEY 7" x 5/8" 5L/B	PULLEY020	5
68		CL.PAD 5/8x4x0.125"	CLUTCHPAD005	3
69		KEY 3/16 X 1/2	KW031	5
70		OPERA CLUTCHPLATE	CLUTCHPLATE006	3



**APPROUVÉ**  
*Jonathan P*  
 2016-08-05

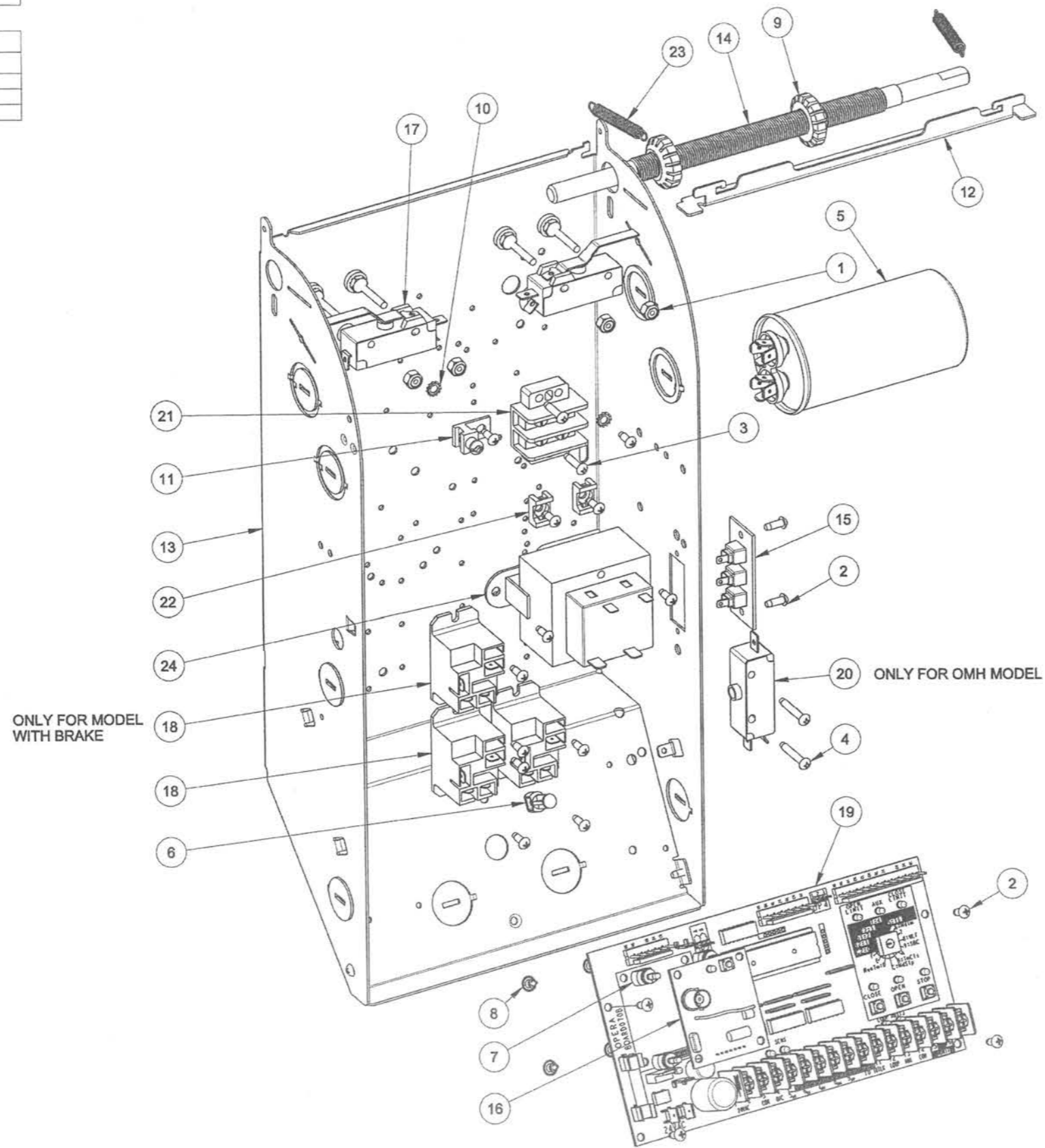
PART DESCRIPTION		<b>SUB ASSY FRAME OMJ</b>	
PART NUMBER	OMJFRAME	MANARAS-OPERA	136 ONEIDA DRIVE
DRAWN BY:	J. PROULX	POINTE-CLAIRE, QC, H9R 1A8	TEL: 1-800-361-2280
DATE:	2012-04-12	FAX: 1-888-626-0606	
UPDATED BY:	O.BOTEZATU		
DATE:	2016.08.05		

**CONFIDENTIAL:** THIS DRAWING AND/OR THE INFORMATION CONTAINED HEREIN IS AND REMAINS THE SOLE PROPERTY OF, AND IS PROPRIETARY TO, MANARAS-OPERA. THIS DRAWING AND/OR INFORMATION SHALL BE KEPT CONFIDENTIAL AND MAY NOT BE REPRODUCED, COPIED, MODIFIED, DISCLOSED, TRANSFERRED, OR MADE AVAILABLE TO OTHERS, EXCEPT WITH THE EXPRESS CONSENT OF MANARAS-OPERA. IT IS LOANED IN CONFIDENCE FOR MUTUAL ASSISTANCE PURPOSES ONLY. MANARAS-OPERA MAY AT ANY TIME, WRITTEN MODIFY THE DRAWING AND/OR INFORMATION CONTAINED HEREIN.



HARNESS		
Qty	DESCRIPTION	# MANARAS
1	CONTROL HARNESS (INSIDE CBOX)	HARNESS098

LABELS		
Qty	DESCRIPTION	# MANARAS
1	USE COPPER STICKER 1.75-3/16	STICKER068
1	2 AMP FUSE STICKER	STICKER003
1	L N 115VAC 1PH STICKER	STICKER035



No	Qty	DESCRIPTION	# MANARAS	REV
1	4	6-32 HEX NYLON LOCK NUT ZP	NUT018	
2	18	6-32 X 3/8 TYPE T S-TAP. SCREW	SCREW094	
3	2	6-32 X 5/8 TYPE F S-TAP. SCREW	SCREW095	
4	2	6-32 X 7/8 TYPE F S-TAP. SCREW	SCREW096	
5	1	70 MF 250VAC/B50/60HZ	CAPACITOR024	
6	1	BOARD SUPPORT 1/2 CUT	SUPPORT013	
7	4	BOARD SUPPORT 7/16 IN.	SUPPORT014	
8	5	BOARD SUPPORT RIVET	SUPPORT002	
9	2	CAM LIMIT OPERA	CAM011	2
10	2	EXT. OVERLAP TOOTH LOCK WASHER M4	WASHER065	
11	1	GROUND LUG TA81G-UJL	CONNECTOR039	
12	1	OPERA CBOX CAMPLATE	CAMPLATE019	5
13	1	OPERA CONTROL BOX	CBOX040-041	
14	1	OPERA LIMIT SHAFT	SHAFT103	9
15	1	RADIO CONTROL TERM STRIP	TSTRIP005	
16	1	RADIO REC. ROLL. CODE	RADIORE101	
17	2	SINGLE LIMIT SWITCH - LEVER 46 DEG	LIMIT023	4
18	3	SPST-NO 30A 24VDC FLANGE MOUNT.	RELAY068	
19	1	STD ELECT. CONTR. BOARD	BOARD070	
20	1	STD SINGLE CUT-OFF SWITCH	LIMIT020	
21	1	TERMINAL STRIP 2 POSITIONS	TSTRIP009	
22	2	TIE-WRAP ANCHOR	SUPPORT003	
23	2	TOGGLE SWITCH SPRING	SPRING030	
24	1	TRANSFO 120/240-24 40VA	TRANSF143	

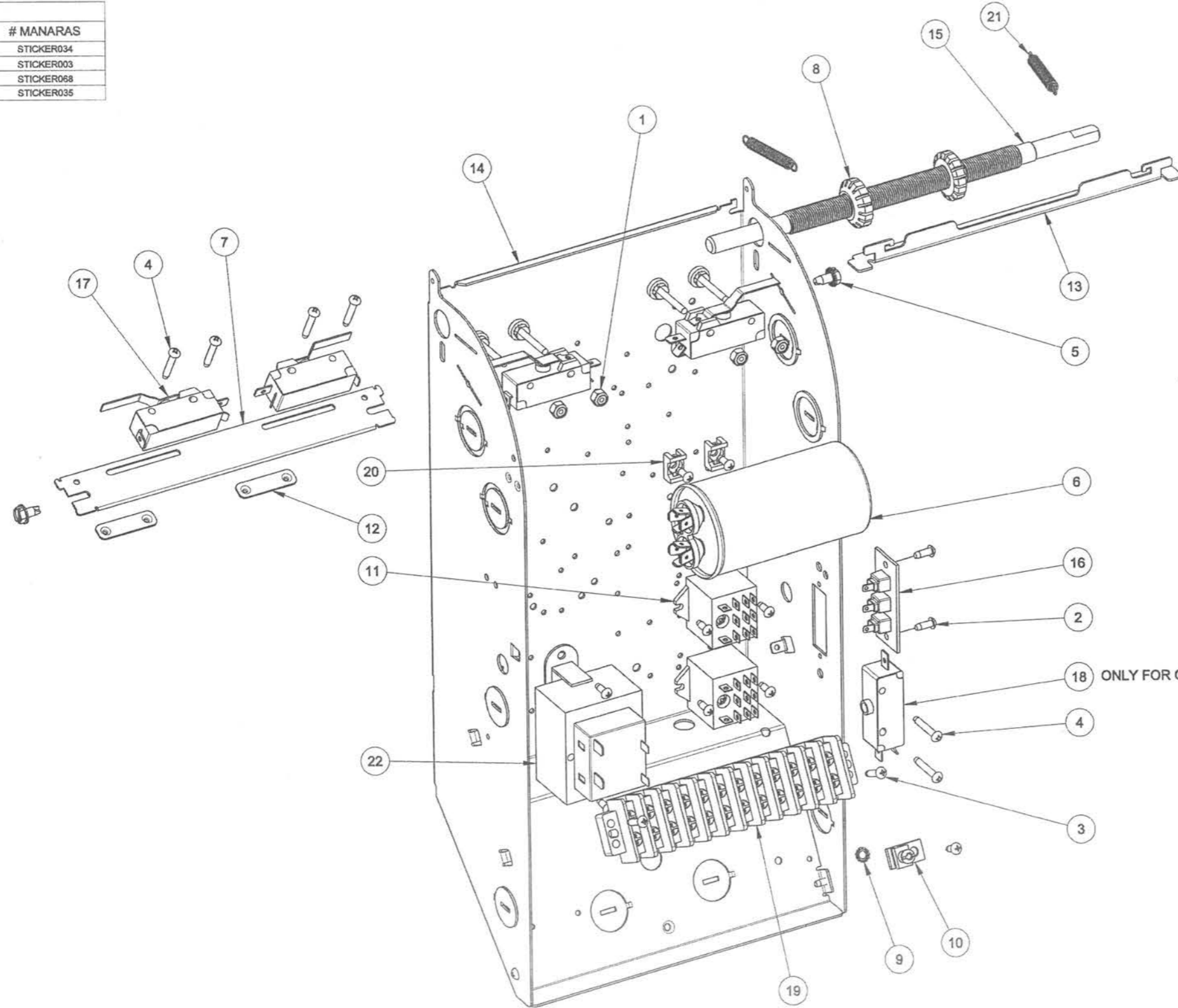
**APPROUVÉ**  
*Zandhan*  
 2016-09-22

PART DESCRIPTION <b>SUBA CBOX OPERA MD BOARD</b>		
PART NUMBER <b>CBOX-OPMD-EM</b>	MANARAS-OPERA 136 ONEIDA DRIVE POINTE-CLAIRE, QC, H9R 1A8 TEL: 1-800-361-2260 FAX: 1-888-626-0606	
DRAWN BY: J. PROULX		
DATE: 2010-09-29		
UPDATED BY: J. PROULX		
DATE: 2016.09.22	SHEET: 1 of 1	

**CONFIDENTIAL:** THIS DRAWING AND/OR THE INFORMATION CONTAINED HEREIN IS AND REMAINS THE SOLE PROPERTY OF, AND IS PROPRIETARY TO, MANARAS-OPERA. THIS DRAWING AND/OR INFORMATION SHALL BE KEPT CONFIDENTIAL AND MAY NOT BE REPRODUCED, COPIED, MODIFIED, DISCLOSED, TRANSFERRED, OR MADE AVAILABLE TO OTHERS, EXCEPT WITH THE EXPRESS CONSENT OF MANARAS-OPERA. IT IS LOANED IN CONFIDENCE FOR MUTUAL ASSISTANCE PURPOSES ONLY. MANARAS-OPERA MAY AT ANY TIME, WRITTEN MODIFY THE DRAWING AND/OR INFORMATION CONTAINED HEREIN.

HARNESS		
Qty	DESCRIPTION	# MANARAS
1	CONTROL HARNESS (INSIDE CBOX)	HARNESS038

LABELS		
Qty	DESCRIPTION	# MANARAS
1	1,2,...8,9 STICKER 1/4X4	STICKER034
1	2 AMP FUSE STICKER	STICKER003
1	USE COPPER STICKER	STICKER068
1	L N 115VAC 1PH STICKER	STICKER035



No	Qty	DESCRIPTION	# MANARAS	REV
1	4	6-32 HEX NYLON LOCK NUT ZP	NUT018	
2	11	6-32 X 3/8 TYPE T S-TAP. SCREW	SCREW094	
3	2	6-32 X 5/8 TYPE F S-TAP. SCREW	SCREW095	
4	6	6-32 X 7/8 TYPE F S-TAP. SCREW	SCREW096	
5	2	10-24 X 3/8 TYPE T S-TAP. SCREW	SCREW022	
6	1	70 MF 250VAC/B50/60HZ	CAPACITOR024	
7	1	ADV LS BRACKET	BRACKET245	4
8	2	CAM LIMIT OPERA	CAM011	2
9	1	EXT. OVERLAP TOOTH LOCK WASHER M4	WASHER065	
10	1	GROUND LUG TA61G-UL	CONNECTOR039	
11	2	IDEL 24 VAC RELAY TRIPLE POLE	RELAY039	
12	2	LS MOUNTING BRKT	BRACKET246	2
13	1	OPERA CBOX CAMPLATE	CAMPLATE019	5
14	1	OPERA CONTROL BOX	CBOX040-041	
15	1	OPERA LIMIT SHAFT	SHAFT103	9
16	1	RADIO CONTROL TERM STRIP	TSTRIP005	
17	4	SINGLE LIMIT SWITCH - LEVER 46 DEG	LIMIT023	4
18	1	STD SINGLE CUT-OFF SWITCH	LIMIT020	
19	1	TERMINAL STRIP 12 POSITIONS	TSTRIP001	
20	2	TIE-WRAP ANCHOR	SUPPORT003	
21	2	TOGGLE SWITCH SPRING	SPRING030	
22	1	TRANSFO 120/240-24 40VA	TRANSF143	

ONLY FOR OMH MODEL

**APPROUVE**  
*Jonathan P.*  
 2016-09-22

PART DESCRIPTION  
**SUBA CBOX OPERA MD HARDWARE**

PART NUMBER <b>CBOX-OPMD-HW</b>	MANARAS-OPERA 136 ONEIDA DRIVE POINTE-CLAIRE, QC, H9R 1A8 TEL: 1-800-361-2260 FAX: 1-888-626-0606
DRAWN BY: J. PROULX	
DATE: 2010-09-30	
UPDATED BY: O. BOTEZATU	
DATE: 2016.09.22	



SHEET: 1 of 2

**CONFIDENTIAL:** THIS DRAWING AND/OR THE INFORMATION CONTAINED HEREIN IS AND REMAINS THE SOLE PROPERTY OF, AND IS PROPRIETARY TO, MANARAS-OPERA. THIS DRAWING AND/OR INFORMATION SHALL BE KEPT CONFIDENTIAL AND MAY NOT BE REPRODUCED, COPIED, MODIFIED, DISCLOSED, TRANSFERRED, OR MADE AVAILABLE TO OTHERS, EXCEPT WITH THE EXPRESS CONSENT OF MANARAS-OPERA. IT IS LOANED IN CONFIDENCE FOR MUTUAL ASSISTANCE PURPOSES ONLY. MANARAS-OPERA MAY AT ANY TIME, WRITTEN MODIFY THE DRAWING AND/OR INFORMATION CONTAINED HEREIN.