

# Selection Guide

## Commercial and Industrial Garage Door Solutions

- Jackshaft Operators
- Gearhead Operators
- Trolley Operators
- Apartment-Style Trolley Operators
- Sliding Door Operators
- Rapid Door Operators
- Market-Specific Operators
- High-Performance Operators
- Environmental Applications
- Separate Control Panels
- Accessories



Effective March 1, 2026

Jackshaft operators are designed to be used on any door with a shaft, sprockets and chain as the driving elements. They can be installed on standard, high or vertical lift sectional doors or rolling doors and grilles. They can be wall, hood or shelf mounted on either side of the door.

## Opera-MJ (OMJ)

Medium-duty



- 14 cycles/hour, 50 cycles/day
- 1/2 HP, intermittent-duty motor
- 5L/B V-belt, chain and sprocket reduction
- Floor level disconnect mechanism
- Mechanical brake
- Adjustable friction clutch
- Accu-cam® limit setting feature
- ECB control, Nema 1 monitored photoelectric cells, radio receiver on-board

## Opera-MH (OMH)

Medium-duty hoist



- 14 cycles/hour, 50 cycles/day
- 1/2 HP, intermittent-duty motor
- 5L/B V-belt, chain and sprocket reduction
- Hoist-a-matic® self-engaging hoist for manual chain operation
- Mechanical brake
- Adjustable friction clutch
- Accu-cam® limit setting feature
- ECB control, Nema 1 monitored photoelectric cells, radio receiver on-board

## Opera-J (OPJ)

Heavy-duty



- 25 cycles/hour, 100 cycles/day
- Continuous-duty motor up to 1 HP
- 5L/B V-belt, chain and sprocket reduction
- Floor level disconnect mechanism
- Mechanical brake
- Adjustable friction clutch
- Accu-cam® limit setting feature
- ECB control, Nema 1 monitored photoelectric cells, radio receiver on-board

## Opera-H (OPH)

Heavy-duty hoist



- 25 cycles/hour, 100 cycles/day
- Continuous-duty motor up to 1 HP
- 5L/B V-belt, chain and sprocket reduction
- Hoist-a-matic® self-engaging hoist for manual chain operation
- Mechanical brake
- Adjustable friction clutch
- Accu-cam® limit setting feature
- ECB control, Nema 1 monitored photoelectric cells, radio receiver on-board

## Opera-HJ (OHJ)

Heavy-duty hoist and manual egress



- 25 cycles/hour, 100 cycles/day
- Specifically designed for store-front grilles
- Continuous-duty motor up to 1 HP
- 5L/B V-belt, chain and sprocket reduction
- Hoist-a-matic® self-engaging hoist for manual chain operation
- Floor level disconnect mechanism for manual egress (not shown)
- Mechanical brake
- Mechanical door lock sensor
- Adjustable friction clutch
- Accu-cam® limit setting feature
- ECB control, Nema 1 monitored photoelectric cells, radio receiver on-board

## Opera-SH (OSH)

Heavy-duty industrial hoist



- 25 cycles/hour, >100 cycles/day
- Continuous-duty motor up to 1 HP
- 5L/B V-belt, chain and sprocket reduction
- Manual chain hoist with floor level disconnect (not shown) and electrical cut-out
- Electrically activated drum-band type solenoid brake
- Cast iron flanged pillow block bearings on input and output shafts
- Adjustable friction clutch
- Accu-cam® limit setting feature
- ECB control, Nema 1 monitored photoelectric cells, radio receiver on-board



800-361-2260 • manaras.com

Specifications and design modifications subject to change without prior notice. SG.2026.03.01\_R0  
For additional information, availability or additional products not listed, please contact Inside Sales.

## Rapido® RSH

High-speed heavy-duty industrial hoist



- >150 cycles/day
- For fast sectional doors
- 1 HP, continuous-duty switchless motor
- High-end on-board control, VFD
- Soft-starts and soft-stops
- 5L/B V-belt, chain and sprocket reduction
- Manual chain hoist with floor level disconnect and electrical cut-out
- Electrically activated high-cycle drum-band type solenoid brake
- Cast iron flanged pillow block bearings on input and output shafts
- Adjustable friction clutch
- Accu-cam® limit setting feature
- ECB control, Nema 4X monitored photoelectric cells, radio receiver on-board

## Rapido® RVH

High-speed heavy-duty industrial hoist



- >150 cycles/day
- For fast vinyl rolling doors / roll-up bug screens
- 1 HP, continuous-duty switchless motor
- High-end on-board control, VFD
- Soft-starts and soft-stops
- 5L/B V-belt, chain and sprocket reduction
- Manual chain hoist with floor level disconnect and electrical cut-out
- Electrically activated high-cycle drum-band type solenoid brake
- Cast iron flanged pillow block bearings on input and output shafts
- Adjustable friction clutch
- Accu-cam® limit setting feature
- ECB control, Nema 4X monitored photoelectric cells, radio receiver on-board

## MSJ

Ultra heavy-duty industrial hoist



- >35 cycles/hour, >150 cycles/day
- Continuous-duty motor up to 1 HP
- Bx cogged V-belt, chain and sprocket reduction
- Manual chain hoist with floor level disconnect (not shown) and electrical cut-out
- Electrically activated high-cycle drum-band type solenoid brake
- Cast iron flanged pillow block bearings on input, intermediary, and output shafts
- Adjustable friction clutch
- Accu-cam® limit setting feature
- ECB control, Nema 1 monitored photoelectric cells, radio receiver on-board

## Rapido® RMSJ

High-speed ultra heavy-duty industrial



- >150 cycles/day
- For large fast sectional doors
- 1 HP, continuous-duty switchless motor
- High-end on-board control, VFD
- Soft-starts and soft-stops
- Bx cogged V-belt, chain and sprocket reduction
- Manual chain hoist with floor level disconnect (not shown) and electrical cut-out
- Electrically activated high-cycle drum-band type solenoid brake
- Cast iron flanged pillow block bearings on input, intermediary, and output shafts
- Adjustable friction clutch
- Accu-cam® limit setting feature
- ECB control, Nema 4X monitored photoelectric cells, radio receiver on-board

## Opera-GH (OGH)

Heavy-duty industrial gearhead



- 25 cycles/hour, >80 cycles/day
- Continuous-duty motor up to 2 HP
- 45:1 worm gear in oil bath reduction
- Hoist-a-matic® self-engaging hoist for manual chain operation
- Electrically activated drum-band type solenoid brake
- Accu-cam® limit setting feature
- ECB control, Nema 1 monitored photoelectric cells, radio receiver on-board
- Adjustable friction clutch (optional)

## Rapido® RGH

High-speed industrial gearhead



- >150 cycles/day
- For fast sectional and rolling doors
- 1 HP, continuous-duty switchless motor
- High-end on-board control, VFD
- Soft-starts and soft-stops
- 20:1 or 44:1 worm gear in oil bath reduction
- Hoist-a-matic® self-engaging hoist for manual chain operation
- Electrically activated drum-band type solenoid brake
- Accu-cam® limit setting feature
- ECB control, Nema 4X monitored photoelectric cells, radio receiver on-board
- Adjustable friction clutch (optional)



800-361-2260 • manaras.com

Specifications and design modifications subject to change without prior notice. SG.2026.03.01\_R0  
For additional information, availability or additional products not listed, please contact Inside Sales.

## MGH

### Heavy-duty industrial gearhead



- 30 cycles/hour, >100 cycles/day
- Continuous-duty industrial motor up to 3 HP
- 40:1 worm gear in oil bath reduction
- Worm gearbox enclosed with reinforced steel frame
- Electrically activated drum-band type solenoid brake
- Manual chain hoist with floor level disconnect and electrical cut-out
- Cast iron flanged pillow block bearings on output shaft
- Accu-cam<sup>®</sup> limit setting feature
- ECB control, Nema 1 monitored photoelectric cells, radio receiver on-board
- Brake motor, adjustable friction clutch (optional)

## MRGH

### Heavy-duty industrial gearhead

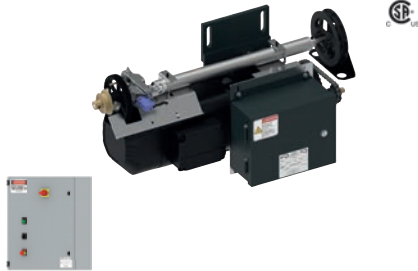


- 30 cycles/hour, >100 cycles/day
- Continuous-duty industrial motor 1 to 5 HP
- 40:1 worm gear in oil bath reduction
- Electrically activated drum-band type solenoid brake
- Manual chain hoist with floor level disconnect and electrical cut-out
- Pillow block bearing support(s) on reducer output shaft (≥ 3 HP)
- Accu-cam<sup>®</sup> limit setting feature
- ECB control, Nema 1 monitored photoelectric cells, radio receiver on-board
- Brake motor (optional/standard 5 HP), adjustable friction clutch (optional)

High-performance operators for different types of doors, of all sizes, sprung or unsprung, standard or high-speed, high-cycling and extended life cycle. Choosing the right operator for your specific application will optimize energy and operational efficiency, enhance reliability in daily operations, minimize maintenance costs, and extend the lifespan of the door system.

## Allegro®

Ultra heavy-duty high-cycling industrial



- 100 cycles/hour, 500 cycles/day
- Chain drive operator
- Continuous-duty, 1 to 7.5 HP 3-phase, totally enclosed, brake motor
- High-end helicoidal gear reduction
- Hoist-a-matic® self-engaging hoist for manual chain operation
- DC operated electromagnetic disc brake, integrated in motor, engaged by default (springs), electrically released, with additive manual release
- Operator mounted control (OMC) or separate industrial control panel
- Environmental modifications, low temperature upgrades and high/low voltage plug-and-play cables (optional)

## DT-Series

High-performance direct drive



- 50 cycles/hour, 250 cycles/day
- Direct-mount hollow shaft
- Inverter-duty rated, 1 HP 3-phase motor, totally enclosed, IP-55
- High-end worm gear reducer (synthetic oil)
- Hand crank or floor level disconnect or chain hoist with cut-off switch for manual operation
- Single-turn mechanical limit system
- Includes: torque arm bracket (not shown)
- Separate industrial control panel
- High/low voltage pre-wired cables
- 24Vdc disc brake (DTB - supplied based on door application)
- Corrosive environment protection (DTC/DTBC - optional)

## DH-Series

High-performance direct drive



- 50 cycles/hour, 300 cycles/day
- Direct-mount hollow shaft
- Inverter-duty rated, brake motor, 1 to 7.5 HP 3-phase, totally enclosed, IP-55
- High-end helical bevel gear reduction (synthetic oil)
- Hoist-a-matic® self-engaging hoist for manual chain operation
- DC operated electromagnetic disc brake, integrated in motor, engaged by default (springs), electrically released, with additive manual release
- Nema 4/12 limit enclosure
- Accu-cam® limit setting feature
- Separate industrial control panel
- Torque arm bracket, low temperature upgrades and high/low voltage plug-and-play cables (optional)

## DS-Series

High-performance direct drive



- 100 cycles/hour, 500 cycles/day
- Direct-mount hollow shaft
- Inverter-duty rated, brake motor, 1 to 7.5 HP 3-phase, totally enclosed, IP-55
- High-end helical bevel gear reduction
- Hoist-a-matic® self-engaging hoist for manual chain operation
- DC operated electromagnetic disc brake, integrated in motor, engaged by default (springs), electrically released, with additive manual release
- Nema 4/12 limit enclosure
- Accu-cam® limit setting feature
- Separate industrial control panel
- Torque arm bracket, environmental modifications, low temperature upgrades and high/low voltage plug-and-play cables (optional)



800-361-2260 • manaras.com

Specifications and design modifications subject to change without prior notice. SG.2026.03.01\_R0  
For additional information, availability or additional products not listed, please contact Inside Sales.

# Trolley Operators

Trolley operators are designed to open and close standard lift doors as the carriage is driven back and forth on the horizontal operator track. They are usually ceiling mounted on the centerline of the door.

## OMT Medium-duty



- 14 cycles/hour, 50 cycles/day
- 1/2 HP intermittent-duty motor
- 4L/A V-belt, chain and sprocket reduction
- #48 (#410) roller chain drive, door speed 11"/s
- 6.125" headroom clearance below tracks
- Adjustable friction clutch
- Accu-cam® limit setting feature
- Quick release disconnect arm
- ECB control, Nema 1 monitored photoelectric cells, radio receiver on-board
- Includes: 12 gauge trolley tracks

## OMBT Medium-duty with solenoid brake



- 14 cycles/hour, 50 cycles/day
- 1/2 HP intermittent-duty motor
- 4L/A V-belt, chain and sprocket reduction
- #48 (#410) roller chain drive, door speed 11"/s
- Electrically activated drum-band type solenoid brake
- 6.125" headroom clearance below tracks
- Adjustable friction clutch
- Accu-cam® limit setting feature
- Quick release disconnect arm
- ECB control, Nema 1 monitored photoelectric cells, radio receiver on-board
- Includes: 12 gauge trolley tracks

## OTH Heavy-duty



- 25 cycles/hour, 80 cycles/day
- Continuous-duty motor up to 3/4 HP
- 5L/B V-belt, chain and sprocket reduction
- #48 (#410) roller chain drive (1/2 HP), #41 roller chain drive (3/4 HP), door speed 12"/s
- 6.25" headroom clearance below tracks
- Adjustable friction clutch
- Accu-cam® limit setting feature
- Quick release disconnect arm
- ECB control, Nema 1 monitored photoelectric cells, radio receiver on-board
- Includes: 12 gauge trolley tracks

## OTH-A.00 High-cycling apartment-style



- 30 cycles/hour, >100 cycles/day
- Continuous-duty motor up to 3/4 HP
- 4L/A V-belt, chain and sprocket reduction
- #41 roller chain drive, door speed 9"/s
- 6.25" headroom clearance below tracks
- Cast iron flanged pillow block bearings on input shaft
- Adjustable friction clutch
- Accu-cam® limit setting feature
- Quick release disconnect arm
- ECB control, Nema 1 monitored photoelectric cells, radio receiver on-board
- Includes: 12 gauge trolley tracks

## Silencio® OTH-A.06 Silent apartment-style



- >100 cycles/day
- Integrated enhancement features reducing noise emissions by a magnitude of 4 ☞
- Continuous-duty motor up to 3/4 HP
- Anti-vibration mount design ☞
- Ax cogged V-belt, chain and sprocket reduction
- #41 roller chain drive, door speed 9"/s
- 7.36" headroom clearance below tracks
- Cast iron flanged pillow block bearings on input and output shafts
- Adjustable friction clutch
- Accu-cam® limit setting feature
- Quick release disconnect arm
- ECB control, Nema 4X monitored photoelectric cells, radio receiver on-board
- Includes: 12 gauge trolley tracks with 3/4" poly-sleeved track spacers ☞

## OTBH Heavy-duty with solenoid brake



- 25 cycles/hour, 80 cycles/day
- Continuous-duty motor up to 1 HP
- 5L/B V-belt, chain and sprocket reduction
- #48 (#410) roller chain drive (1/2 HP), #41 roller chain drive (3/4, 1 HP), door speed 12"/s
- Electrically activated drum-band type solenoid brake
- 6.25" headroom clearance below tracks
- Adjustable friction clutch
- Accu-cam® limit setting feature
- Quick release disconnect arm
- ECB control, Nema 1 monitored photoelectric cells, radio receiver on-board
- Includes: 12 gauge trolley tracks



800-361-2260 • manaras.com

Specifications and design modifications subject to change without prior notice. SG.2026.03.01\_R0  
For additional information, availability or additional products not listed, please contact Inside Sales.

## OTBH-A.00

High-cycling apartment-style



- 30 cycles/hour, >100 cycles/day
- Continuous-duty motor up to 1 HP
- 4L/A V-belt, chain and sprocket reduction
- #41 roller chain drive, door speed 9"/s
- Electrically activated drum-band type solenoid brake
- 6.25" headroom clearance below tracks
- Cast iron flanged pillow block bearings on input shaft
- Adjustable friction clutch
- Accu-cam® limit setting feature
- Quick release disconnect arm
- ECB control, Nema 1 monitored photoelectric cells, radio receiver on-board
- Includes: 12 gauge trolley tracks

## OTBH-A.05

High-cycling premium apartment, brake<sup>+</sup>



- 30 cycles/hour, >100 cycles/day
- Continuous-duty motor up to 1 HP
- Ax cogged V-belt, chain and sprocket reduction
- #41 roller chain drive, door speed 9"/s
- Electrically activated insulated drum-shoe type solenoid brake and low vibration braking system
- 6.25" headroom clearance below tracks
- Cast iron flanged pillow block bearings on input and output shafts
- Adjustable friction clutch
- Accu-cam® limit setting feature
- Quick release disconnect arm
- ECB control, Nema 4X monitored photoelectric cells, radio receiver on-board
- Includes: 12 gauge trolley tracks

## Silencio® OTBH-A.06

Silent apartment-style with brake<sup>+</sup>



- >100 cycles/day
- Integrated enhancement features reducing noise emissions by a magnitude of 4
- Continuous-duty motor up to 1 HP
- Anti-vibration mount design
- Ax cogged V-belt, chain and sprocket reduction
- #41 roller chain drive, door speed 9"/s
- Electrically activated insulated drum-shoe type solenoid brake and low vibration braking system
- 7.36" headroom clearance below tracks
- Cast iron flanged pillow block bearings on input and output shafts
- Adjustable friction clutch
- Accu-cam® limit setting feature
- Quick release disconnect arm
- ECB control, Nema 4X monitored photoelectric cells, radio receiver on-board
- Includes: 12 gauge trolley tracks with 3/4" poly-sleeved track spacers

## Rapido® RTBH-1.19, 1.23

High-speed high-cycling apartment-style



- >150 cycles/day
- For fast standard lift sectional doors with an opening speed of 19" or 23"/s max.
- 1 HP, continuous-duty switchless motor
- High-end on-board control, VFD
- Soft-starts and soft-stops
- Bx cogged V-belt, chain and sprocket reduction
- #41 roller chain drive
- Electrically activated drum-band type solenoid brake
- 8.75" headroom clearance below tracks
- Cast iron flanged pillow block bearings on input and output shafts
- Adjustable friction clutch
- Accu-cam® limit setting feature
- Quick release disconnect arm
- ECB control, Nema 4X monitored photoelectric cells, radio receiver on-board
- Includes: 12 gauge trolley tracks

## Silencio® RTBH-A.06

Silent high-cycling apartment-style



- >150 cycles/day
- Integrated enhancement features reducing noise emissions by a magnitude of 4
- 1 HP, continuous-duty switchless motor
- Anti-vibration mount design
- High-end on-board control, VFD
- Soft-starts and soft-stops
- Bx cogged V-belt, chain and sprocket reduction
- #41 roller chain drive, door speed 9"/s max.
- Electrically activated drum-band type solenoid brake
- 8.75" headroom clearance below tracks
- Cast iron flanged pillow block bearings on input and output shafts
- Adjustable friction clutch
- Accu-cam® limit setting feature
- Quick release disconnect arm
- ECB control, Nema 4X monitored photoelectric cells, radio receiver on-board
- Includes: 12 gauge trolley tracks with 3/4" poly-sleeved track spacers

## MGT

Heavy-duty industrial gearhead



- 30 cycles/hour, >100 cycles/day
- Continuous-duty industrial motor up to 2 HP
- 20:1 worm gear in oil bath reduction
- #41 roller chain drive, door speed 9"/s (1/2 HP and 3/4 HP) or 6"/s (1 and 1-1/2 HP)
- Electrically activated drum-band type solenoid brake
- Pillow block bearings on output shaft (≥ 2 HP)
- In-line adjustable friction clutch
- Accu-cam® limit setting feature
- Quick release disconnect arm
- ECB control, Nema 1 monitored photoelectric cells, radio receiver on-board
- Includes: 12 gauge trolley tracks



800-361-2260 • manaras.com

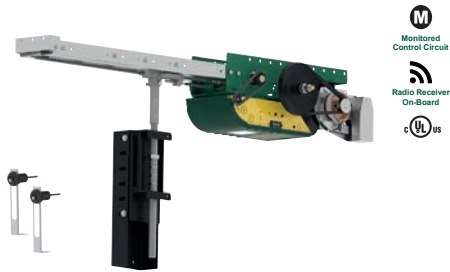
Specifications and design modifications subject to change without prior notice. SG.2026.03.01\_R0  
For additional information, availability or additional products not listed, please contact Inside Sales.

# Sliding Door Operators

Sliding door operators are designed for use on single and bi-parting sliding doors.

## OSL

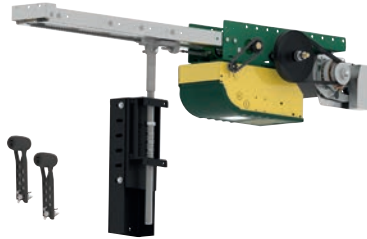
Heavy-duty



- 25 cycles/hour, 80 cycles/day
- Continuous-duty motor up to 1 HP
- 5L/B V-belt, chain and sprocket reduction
- #41 roller chain drive, door speed 12"/s
- Electrically activated drum-band type solenoid brake
- Adjustable friction clutch
- Accu-cam® limit setting feature
- Quick release disconnect arm
- ECB control, Nema 1 monitored photoelectric cells, radio receiver on-board
- Includes: 12 gauge trolley tracks, sliding door hardware and hanging brackets

## Rapido® RSL

High-speed heavy-duty



- >150 cycles/day
- For fast single and bi-parting sliding doors
- 1 HP, continuous-duty switchless motor
- High-end on-board control, VFD
- Soft-starts and soft-stops
- 5L/Bx cogged V-belt, chain and sprocket reduction
- #41 roller chain drive, door speed 19"/s
- Electrically activated drum-band type solenoid brake
- Cast iron flanged pillow block bearings on input and output shafts
- Adjustable friction clutch
- Accu-cam® limit setting feature
- Quick release disconnect arm
- ECB control, Nema 4X monitored photoelectric cells, radio receiver on-board
- Includes: 12 gauge trolley tracks, sliding door hardware and hanging brackets

## MGSL

Heavy-duty industrial gearhead



- 30 cycles/hour, >100 cycles/day
- Continuous-duty industrial motor up to 2 HP
- 20:1 worm gear in oil bath reduction (single leaf door), 44:1 worm gear (bi-parting doors)
- #41 roller chain drive, door speed 9"/s
- Electrically activated drum-band type solenoid brake
- Pillow block bearings on output shaft (≥ 2 HP)
- In-line adjustable friction clutch
- Accu-cam® limit setting feature
- Quick release disconnect arm
- ECB control, Nema 1 monitored photoelectric cells, radio receiver on-board
- Includes: 12 gauge trolley tracks, sliding door hardware and hanging brackets

## Damp environment upgrade

Nema 4/12 type



- For applications where dust, water spray, oil spray or any other type of condensation is present
- Totally enclosed motor
- Nema 4/12 rated components
- Seal-tight conduit and connectors
- Fiberglass, Nema 4/12 rated control enclosure
- Waterproof transmission, limit and drive chains
- ECB control, Nema 4X monitored photoelectric cells, radio receiver on-board
- Includes: Nema 4/12 rated 3 push-button control station
- Applicable models: contact Inside Sales

## Corrosive environment upgrade

Nema 4X type



- Provides increased protection against corrosion, in addition to basic protection against dust, water spray or oil spray
- Totally enclosed corrosion resistant motor
- Nema 4X rated components
- Seal-tight conduit and connectors
- Fiberglass, Nema 4X rated control enclosure
- Corrosion resistant transmission, limit and drive chains
- ECB control, Nema 4X monitored photoelectric cells, radio receiver on-board
- Includes: Nema 4X rated 3 push-button control station
- Applicable models: contact Inside Sales

## Hazardous location upgrade

Nema 7/9 type



- Designed and certified for indoor use in hazardous (classified) locations
- Electrical motor rated for hazardous locations
- CSA certified/UL listed die-cast enclosure
- Electrical connections from motor to control enclosure consist of hazardous location certified fittings
- Includes: 3 push-button control station rated for indoor hazardous (classified) locations
- Applicable models: contact Inside Sales

## Separate control panels

Nema 4, 4X, 7/9 type



- Applications when there is a need for the operator control circuit to be housed at a remote location from the operator
- Standard and custom control (ECB, PLC, VFD)
- Enclosure type available: Nema 4, 4X, 7/9

To obtain detailed information about the accessories shown, verify their availability, or inquire about items not listed, please contact Inside Sales.

## External Entrapment Protection Devices

### Photoelectric Cells



### Light Curtains • Electric Sensing Edges

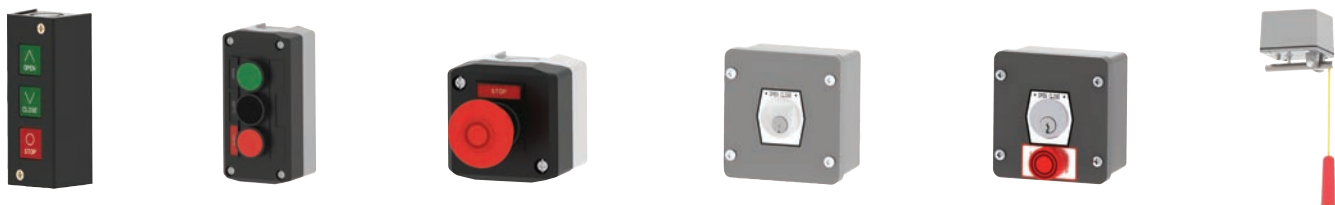


### Pneumatic Sensing Edge Kits



## Control Devices

### Push-Button Control Stations • Key Switch Control Stations • Pull Switch Controls



### Radio Controls • Keypads • Manaras Internet Control®



**Vehicle Management**

Loop Detectors • Motion/Presence Detectors • Pneumatic Treadle Kits



Traffic Lights • LED Light Strips

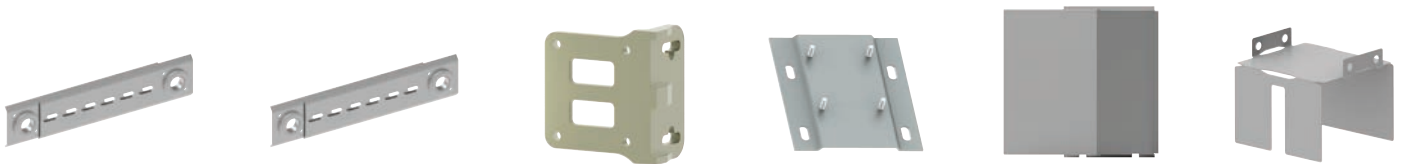


Beacons • Sirens



**Miscellaneous & Specialty Items**

Chain Spreaders • Mounting Brackets • Splash Proof and Protective Covers



Hand Chains • Chain Keepers • Hand Cranks • Manual Chain Hoists





# RECORD

## PROVEN RECORD

Based in Montréal, Québec, Canada, Manaras-Opera is a leader in quality and manufacturing excellence. Backed by over 45 years of experience, we have one of the most comprehensive, reliable and innovative product lines on the market, which includes the signature **Opera** brand of jackshaft, gearhead, trolley and sliding door operators in medium and heavy-duty applications.

# OPERA

## OPERA FEATURES

- Built to last
- User friendly
- Lifetime tested
- ANSI/CAN/US
- 2 year warranty
- Easy to install
- Easy to maintain
- Easy to adjust
- Easy to wire

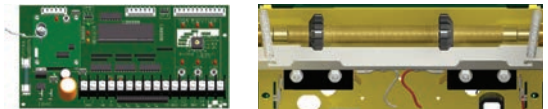
The **Opera** range has been specifically designed to meet the needs of installers. It features numerous innovations, such as the patented **Hoist-a-matic**®, and **Accu-cam**® which make installation and maintenance easier, quicker and safer.



# FLEXIBILITY

## ENGINEERING FLEXIBILITY

Manaras-Opera is not your typical industrial operator manufacturer. Our Engineering Department is recognized for having a unique approach and the flexibility to work closely with our customers in order to develop custom-designed operators to meet the specific needs and performance requirements of their particular applications. Each one of the operators in our comprehensive line can also be customized to meet the specific requirements of the most unique applications.



# SOLUTIONS

## SOLUTIONS ORIENTED

Relying on our broad range of expertise, we aim to offer superior solutions, in order to benefit the market as a whole.

When you think Commercial Door OPERATORS, just think **OPERA**.



SG-2026.03.01\_RO



Printed in Canada ©2026 9141-0720 Québec Inc.

Registered T.M. of Manaras 9141-0720 Québec Inc., all rights reserved.

UL logo is a Reg. T.M. of UL LLC. | CSA logo is a Reg. T.M. of CSA Group.

136, Oneida Drive,  
Pointe-Claire (Québec)  
Canada H9R 1A8

1-800-361-2260  
manaras.com

